

NEWTON NEWS and Newtonian

FRIDAY NOVEMBER 5th 1976

SHOP EARLY FOR YOUR REDIFFUSION CHRISTMAS BOX

1 MONTHS' FREE COLOUR VIEWING
which could also include
your first £18 Licence

20" Colour T.V., from as little as
£6.50 per month

★ Sets also available for 1 months deposit ★
Ensure your Set for Christmas, contact:

REDIFFUSION

Beveridge Way — Newton Aycliffe
Telephone Aycliffe 3622

PART TIME AGENTS REQUIRED

to sell a highly competitive range of ladies and
childrens clothing, direct to the public.

Also Party Plan Agents required

experience preferred, but not essential

★ Top Commission Paid ★ No Cash outlay ★

For further details, please write to:—

BOX No. PP1,

Newton Press, Town Centre, N/Aycliffe

NOW!

IS THE TIME TO LEARN TO DRIVE
FOR YOUR

Summer Holidays '77

Contact:—

NOEL'S DRIVING SCHOOL

Telephone Aycliffe 3909

Churchwarden Geoff Allison makes the farewell presentation
to Rev. Harold Hall. (see story overleaf) Photo: J. Snowden



New Boots town centre

Boots the Chemist is to have a new 10,000 sq.ft. store in Aycliffe town centre. The new store will have 4,306 sq.ft. of ground floor shopping space (about five times the size of the firm's present shop) plus a similar amount of storage space on the first floor.

Work on site preparation will start almost immediately and the new store should be open for business in the Summer of 1978.

The new store is to be built at the southern end of Beveridge Way, adjacent to Barclays Bank and opposite Hardy's furniture store. The development will also include three shop units with total floor space of 4,000 sq. ft., and 3,500 sq. ft. of commercial office space at first floor level. The scheme has been designed by A.D.C. architects and will be built by the Corporation for letting to Boots and other tenants.

"This new store represents a major improvement to shopping facilities in Aycliffe" said Gary Philipson, General Manager of the A.D.C. "We have had a Boots pharmacy in Aycliffe for many years, but this new large store will give the firm the opportunity to introduce a much wider range of goods. I am delighted the firm has decided to make this vote of confidence in Aycliffe now. It confirms the Corporation's faith in the town's future."

The first stage of this new development will be the closure of the small parking area in front of 64 to 72 Beveridge Way, to allow engineering works to proceed. This will enable the complete pedestrianisation of Aycliffe town centre to go ahead. The date for this closure has not been finalised yet, but the Corporation hopes to avoid having to remove these parking spaces before Christmas.

There are at present 339 free car parking spaces in the town centre, excluding the 26 in Beveridge Way. Before the closure of these an extra 30

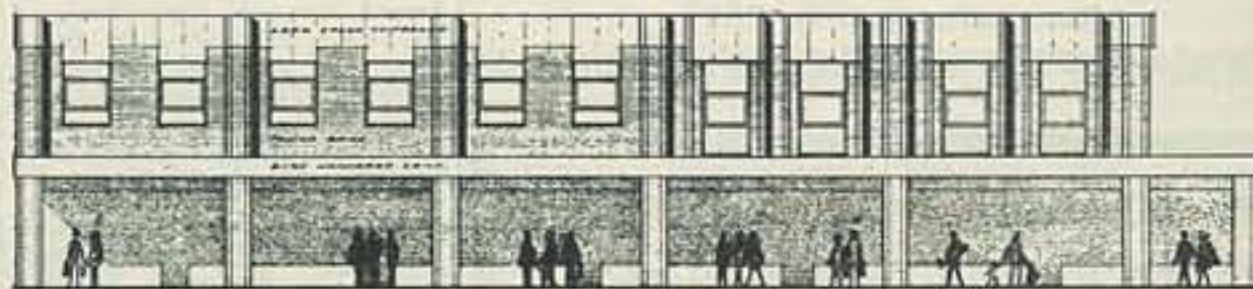
will be provided on the site of the former Boys Club (opposite the Fire Station in Central Avenue). The three parking bays for handicapped drivers in Beveridge Way will be replaced nearby with four new spaces.

NEW ROUNDABOUT

Later next year, the northern access to the main town centre roundabout (at Churchill House) will be closed and traffic flow diverted around a new mini roundabout. Further additional parking spaces will be provided at this stage.

Aycliffe Development Corporation will ensure that inconvenience to the public is kept to a minimum throughout the development of this important addition to town centre shopping facilities.

Below, an artists impression of the new shopping area, as viewed from Beveridge Way.



Grand Sale at Church

The Annual Sale of Work to be held at St. Clares Church promises to be bigger and better than ever this year with hundreds of bargains available.

Bottle stall, cake stall, haberdashery, stationery, fancy goods in addition to ex-vicar's bric-a-brac, go to make a very interesting display in the church halls. There are also tombola stalls, games and facilities for shoppers to partake of Afternoon Tea which is being served during the Sale.

Admission to the sale will be 5p and free to children accompanied by an adult.

The Sale is on this weekend, Saturday 6th November and starts at 2.00 p.m.

The Church, as always, is desperate for cash to keep the building maintained and everything ticking over. Like everyone else, inflation has caused many problems and the Church has to rely on events such as jumble sales, annual sales, raffles etc. to supplement the meagre income.

The difficulty at St. Clares stems from the fact that not all persons who call themselves "Church of England" support their local Church. The main source of income at St. Clares comes from the weekly offering envelope scheme. Over the years the numbers in the scheme have decreased as people get out of the habit of attending Church. It is these people St. Clares want to get back and appeal to them to return and support the work of the Church in Newton Aycliffe.

"NEWTON NEWS" REACHES MORE

At the request of several of our advertisers, and as part of the natural expansion policy of Newton Press, it has been decided to include Aycliffe Industrial Estate as part of the circulation area of the "Newton News" — thus giving workers and management on the Industrial Estate who do not live on the town, the opportunity of keeping up with the news, views and services available to them. It will also give companies trading on the estate the opportunity of communicating with a potential readership of 27,000.

shop for

NOW ON DISPLAY
CHRISTMAS CARDS
and DECORATIONS
QUALITY STATIONERY GIFT ITEMS
ARRIVING DAILY

JOIN OUR CHRISTMAS CLUB

★ Goods Reserved ★

Newton Press Shop

Up the Ramp (next to Hardings)

THE
TIMEX QUARTZ WATCH
as advertised on T.V.

is at the

Newton Press Shop

opposite the Post Office

Telephone Aycliffe 2893

— CALOR APPROVED — Alvima Gas Heaters

BY INFRODEX

on castors with 3 way control
and automatic push button ignition

Complete with gas & Calor container, costing
approx. 4p PER HOUR TO RUN

SAVE £12 — Our Price £65.00

Free Delivery — 10 mile radius

See our demonstration model at

HACKETT & BAINES

BEVERIDGE WAY — NEWTON AYCLIFFE
Telephone Aycliffe 3649

Established 1966

JOHN ALEXANDER PARTNERSHIP

All Insurance, and Assurance quoted for
For your Motor quotes ask for 'KARPLAN'

Consult us for your

HOUSEHOLD INSURANCE

Don't wait until it's too late!

41a REDWORTH ROAD, SHILDON Tel: 3376

JOHN HARDY RETAIL FORD DEALER

BRIDGE GARAGE — HORNDAL AVENUE
AYCLIFFE INDUSTRIAL ESTATE — Tel: 3132/3

Money Saving Offers for Autumn

PLUGS — 30p POINTS — 35p

GULF & FORD MOTOR OIL

only £1.70 for 5 litres

★ Holts Antifreeze — 30p per pint ★

25% OFF R.R.P. OF ALL FILTERS

Stores open 8.30 a.m. — 6.00 p.m.

Each Weekday, including Saturday

These offers only available until
1st December 1976 — So Hurry!

A Member of the Indecon Group

KEMBLE SCHOOL OF MOTORING

Principal: Terry Farley

GOVERNMENT APPROVED
DRIVING INSTRUCTOR

Member of Institute Advanced
Motorists

Silver Star Holder C.A.M.D.A.
Member League of Safe Drivers
(Grade 1)

R.A.C. Registered Instructor

9 HYLTON CLOSE Tel: Aycliffe 3647

Gift Problems?



Call in at

HARDINGS

SUPERSTORE

TOYS ★ CYCLES ★ JEWELLERY
★ WATCHES & CLOCKS ★

★ 1000's OF GIFT IDEAS ★

UP THE RAMP — TOWN CENTRE

Telephone Aycliffe 2003

Due to sell out - another CALVERTS of Thirsk

MANUFACTURERS CLEARANCE

Cash and Carry DIRECT TO THE PUBLIC CARPET SALE

OVER 2,500 SQ. YARDS ON OFFER

TO BE HELD IN
AYCLIFFE VILLAGE HALL
TUESDAY 9th NOVEMBER

5.00 p.m. - 8.00 p.m.

A large selection of perfect and slightly imperfect
carpets. Cleared from one of the leading manu-
facturers in England, all to be offered for sale at
AT LEAST 50%

BELOW RECOMMENDED PRICES

ALL COLOURS ★ ALL QUALITIES ★ ALL SIZES

HEAVY DOMESTIC QUALITY CARPET

Normally retailing at £3 to £5 per square yard in
beautiful Axminster type patterns, to be offered at
£1.00 to £2.00 per square yard

WASHABLE KITCHEN CARPET

In loads of fabulous patterns and colours
Usually selling from £2.50 to £4.50 per square yard
A GIVE AWAY AT £1.00 to £2.00 per square yard

MEDIUM DOMESTIC QUALITY CARPET

In plain and two tone colourways (not to be con-
fused with cheaper Evlon bedroom quality carpet)
this quality is usually priced from £2.00 to £2.50
per square yard.

IT HAS TO BE THE CHEAPEST ANYWHERE AT
£1.00 PER SQUARE YARD

Loads of quality broadloom remnants at £1 sq. yd.

IF YOU THINK THESE PRICES LOOK TOO GOOD
TO BE TRUE, COME ALONG AND SEE FOR
YOURSELF YOU'LL BE AMAZED AT THE £££££'s
YOU CAN SAVE

Wm. CALVERT Manufacturers mill clearance lines
121 LONG STREET, THIRSK Tel: 22967
Open at the above address Mon.-Fri. 10 am-7 pm

Vicar's farewell

Last Sunday evening, on
his birthday, the Vicar of St.
Clare's Church preached his
final sermon before leaving
the town to take up his new
post as Vicar of Whitburn.

The Church was full and
in attendance was the Mayor
Counc. Elmer and British
Legion President, Tal Jones.
It was a sad occasion and
Rev. Hall was visibly moved
by the number of well-
wishers who came to his fare-
well service and the reception
afterwards.

Yet the event had its en-
joyable and pleasing moments
in the form of speeches and
best wishes at the reception
from Church wardens, Geoff
Allison and Florrie Foulkes.

Presentations were made to
Rev. Hall, and his mother,
who supported her son's min-
istry and ran various ladies' organisations within the Church.

"MISTAKE"

A well kept secret was let
out of the bag when finally
a birthday cake, made by Mrs
Foulkes, was unveiled show-
ing the Vicar's age. He tried
to explain the figures "53"
were a mistake and that they
had inadvertently been rever-
sed, as his age was really 35!

Despite his embarrassment,
the Vicar thanked everyone
for the cake which was a
complete surprise, and for the
large birthday card duly
signed by members of the
congregation. It turned out
that the cake was just what
was required as Mrs Hall re-
vealed it was the first year
she had not baked her son a
birthday cake.

The Vicar and his mother
made their speeches of grati-
tude and said they would be
seeing everyone again for the
final time at the Sale of Work
on November 6th when the
Vicar returns to run his bric-
a-brac stall.

As the town's community
newspaper we take this oppor-
tunity, on behalf of the towns-
people, to thank Rev. Harold
Hall for his work and ministry
here, and to wish him and his
mother every happiness in
their new home at Whitburn.
(see photo on front page)

ROLLER SKATING COMPETITION RESULTS

The results of the Beveridge
Roller Dance and Figure Skat-
ing Clubs' annual Artistic
Roller Skating Competitions
were as follows:—

The Godfrey Gold Award
for solo dancing: 1st Belinda
Lodge, 2nd Julie Graham, 3rd
Rolinda Hind. The Parents
Junior Dance Award for solo
dancing: 1st Jane Edmondson
2nd Angela Owen, 3rd Martin
Haigh. The Double De-Luxe
Award for pair free skating:
1st Janet Spark & Julie Gra-
ham, 2nd Maureen Taylor &
Christine Smith, 3rd Shirley
Denham & Jean Burke. The
Walworth Shield for pair free
dancing: 1st Carol Dunn &
Belinda Lodge, 2nd Christine
Smith & Maureen Taylor, 3rd
Julie Clewes & Mandy Rob-
inson. The Beginners Trophy
for plain skating to music: 1st
Beverley Dodds, 2nd Jane Ed-
mondson, 3rd Lorraine Elliott.
The Beaver Figure Skating
Trophy for school figures: 1st
Deborah Bennett, 2nd Pauline
Balmer-Howison, 3rd Carol
Dunn. The Free Skating Han-
dicap Trophy for solo free
skating: 1st Carol Dunn, 2nd
Janet Spark, 3rd Deborah
Bennett. The New Style Roller
Dance Championship for set
dancing: 1st Rolinda Hind,
2nd Julie Graham, 3rd Maur-
een Taylor. The Lilian Wal-
worth Plaque for the most
successful unplaced competi-
tor: 1st Amanda Steele, 2nd
Lesley Bennett, 3rd Angela
Brennan.

Godfrey A. Bennett
Hon. Secretary

OPERATOR REQUIRED

for part-time work in Newton
Aycliffe, cleaning & sterilizing
telephones in business premi-
ses. Write to: Phonotas Co.
Ltd., 64 Scotswood Road,
Newcastle upon Tyne.

VENETIAN BLINDS

ROLLER BLINDS

- AT FACTORY PRICES
- FREE MEASURING
- FREE FITTING
- CHOICE OF COLOURS
- GUARANTEED
- FAST DELIVERY

SUNDOWN BLINDS

Telephone Aycliffe 4094

9 a.m. to 9 p.m. Mon. to Sat.

Pye 22" Colour T.V.

FREE 133 Newholme

Sewing machine

value £72.00!

FREE stand, FREE Delivery,

FREE 1 years' maintenance

only £10.16 pre deposit

up to 3 years to pay!

available now from

TATES RADIO

56 BEVERIDGE WAY

NEWTON AYCLIFFE

or Telephone Aycliffe 2956

for home demonstration

New Tyres and Vulcanised

repairs

J. F. BELL

Leaside

Aycliffe Industrial Estate

Tel: Aycliffe 3186

SENIOR CITIZENS SAY "THANK YOU"

It is felt certain it is in the
hearts of Senior Citizens and
others at Horndale to offer
thanks for Harvest gifts re-
ceived from St. Francis
Church and Infant School. No
doubt this was emulated by
other churches and schools in
Newton Aycliffe, and the
spirit engendered is an
augury for good, showing as
it does, citizenship on the
highest level. It will be en-
couraged to all those who
gave, and those who did the
work, their beneficence does
not pass unnoticed.
W.A.B.

Anyone seen our missing Goose?

GOOSE AT LARGE in New-
ton Aycliffe — last seen re-
hearsing with the Newton
Players Dramatic Society for
their annual pantomime —
"MOTHER GOOSE."

No doubt it will turn up for
the performances in the Be-
veridge Hall, Tuesday 4th Jan.
until Saturday 8th January.
But to be sure of seeing it
arrive get your tickets now —
10p from the Information
Centre or Newton Press Shop
(up the ramp). Block bookings
from Val Wood, 1 Isherwood
Close.

ROYAL BRITISH LEGION A.G.M.

The Newton Aycliffe Royal
British Legion's Annual Gen-
eral Meeting was held on 24th
October. The need to con-
tribute to Poppy Day and thus
help ex-service men, women
and their dependents was em-
phasised.

Elected Branch officers
were: President: Mr T. Jones,
Vice-President: Mr A. Milburn
Chairman: Mr S. Mossop,
Vice-Chairman: Mr L. Sutton,
Sec. Mr A. Belton, Treas. Mr
R. Dawson, Public Relations
Officer: Mr F. Young.

The Branch Poppy Appeal
Organiser, Mr F. Price, is still
keen to have volunteers for
house-to-house collecting dur-
ing the week commencing 8th
November, and for collecting
in the Town Centre on Sat.
13th November. If you can
spare the odd hour, please
ring Mr Price (2806) or con-
tact the Branch Office in Mac-
millan Road (2876).

REMEMBRANCE DAY

The Parade will form up
outside the Royal British
Legion Club in Macmillan
Road at 10.15 a.m. for ser-
vice in St. Clare's Church at
11 a.m. on Sunday 14th No-
vember. The Salute will be
taken by Commander Peter
Tatham-Brown, R.N.

Completely independent

The Newton Press would
like to dispel all doubts re-
garding the publication of
Newton News. It is not sup-
ported or subsidised at all by
the Aycliffe Dev. Corpora-
tion, nor is it financed in any
way by any other public body.
It costs you, the reader,
nothing and is published and
distributed entirely at the ex-
pense of Newton Press who
derive finance from the sale
of advertising space.

We pay young boys and
girls to distribute the Newton
News to each house in the
town. Unfortunately we
cannot be 100% certain that
they are always doing the job
properly and we rely on our
readers to inform us if they
are not receiving their copy.

The policy of this news-
paper is to be absolutely im-

partial on every topic, yet re-
serving the right to make
comment. Readers are invited
to write to us on any issue,
and provided the article pas-
ses the usual requirements,
will be publicly aired.

There is little need to be
sensational in our editorial as
we are under no pressure to
increase circulation, therefore
we can hear both sides of an
argument calmly without up-
setting either party. In most
cases we are able to resolve
a matter without having to go
into print.

The indication is that our
efforts as the community
newspaper are appreciated,
and this has its reward.

We thank readers for their
kind comments and hope to
continue to be of service for
years to come.

TYRES AND BATTERIES

e.g. UNIROYAL TUBELESS CROSSPLY
550 x 12 ... £8.00 560 x 13 ... £8.50
BATTERIES FROM £9.50 (18 months warranty)

COMPLETE

Exhausts fitted free

Sherwood Bros.

Car & Truck Centre,
Howden Road, Aycliffe Industrial Estate
Telephone Aycliffe 2209/6081

YOUR MAIN VAUXHALL — BEDFORD DEALER

THE HEARING AID SHOP

Large selection of the newest models. Service for all makes
Aid loaned during repair

Batteries — Accessories — Ear Moulds

10 WELLINGTON STREET — STOCKTON ON TEES

Telephone 66388

Resident Dispenser: P. J. Cartwright, M.S.H.A.A.

DISTANCE NO OBJECT — REASONABLE RATES

Joe's Taxis

★ White Cars for Weddings ★

Bookings can now be made for

7 seater Mini Bus

24 HOUR SERVICE

GREENWELL ROAD

TELEPHONE AYCLIFFE 5457

SCOTT'S GREYS LIMITED

32 TUBWELL ROW, DARLINGTON. Tel: 53837

DAY EXCURSIONS

from NEWTON AYCLIFFE

MYSTERY TOURS every Sunday at 1.00 p.m.

LEEDS MARKET

every Saturday & Tuesday until 21st December

Pick up Town Centre 9 a.m. — Fare £1.30

BRADFORD SHOPPING TRIPS

Saturdays 13th November, 11th & 18th December

Pick up Town Centre 9 a.m. — Fare £1.40

YORK SHOPPING TRIPS

Friday 19th November & Monday 29th November

Pick up Town Centre 9 a.m. — Fare £1.15

TRIPS from DARLINGTON to LOCAL RACE MEETINGS

Full excursion list available from

JOHN HUNTER & SONS TRAVEL

Beveridge Way — Newton Aycliffe

Newton Aycliffe Recreation Centre

Ian's 50-50 Disco

Saturday 6th November 1976

8.00 p.m. — 12 midnight

★ Late Night Licence ★

TICKETS £1.00 including Basket Meal
available from the Recreation Centre



ROADCRAFT

Member of I.A.M.

MINISTRY OF TRANSPORT APPROVED
3 THURLOW GROVE, NEWTON AYCLIFFE

Master Driver of British Safety Council ...
Class 1 instruction in learner and advanced driving
law and maintenance

Based on Police Driving system

For further information ring Aycliffe 2568
or contact ex-inspector Crawford

★ GIFTS FOR ALL OCCASIONS ★

WEDDING RINGS and
ENGAGEMENT RINGS

visit

S. HOLUBEK

The Jeweller

TOWN CENTRE — NEWTON AYCLIFFE

Tel: Aycliffe 5470

Four generations shown in this photograph all living in the town. Mrs Ogden 83 years old with daughter, Mrs Gardiner, grandson and great grandson Steven who is one year old today, November 5th. Mrs Ogden came originally from Shildon 21 years ago.

Photo: Sonny Steele

Our news goes far & wide

Two stories in our newspaper received national interest showing how far news carried in our columns travels

The lead story in our last issue concerning the St. Oswalds area initiative in preparing for the Queen's Jubilee brought the organisers a barrage of enquiries from all quarters.

A reader's letter complaining that small animals were being obtained to feed pet snakes created a public outcry, but the lady writer declined further publicity by radio and other newspapers, feeling she had aired the topic sufficiently in Newton News.

New community building for Burnhill

Work is now well advanced on the new Methodist Church being built next to the Boys' Club in the Burnhill area. With a prominent position just off Sid Chaplin Drive, it is well situated for people living in the newly developed Agnew areas as well as for people already living in Burnhill. It is hoped that the building will be ready for use in December.

THE LONG WAIT

It is now ten years since the Methodist Church felt the need for a second base in the town. Elmfield and Horndale Schools, Redhouse Hut, Wesley House, Greenfield Community Hall and the Burnhill Community House have all been used by the Church for

a wide range of activities in addition to the normal church services. Always the Church has tried to be there to welcome people as they move into the newly developed areas.

THE COST

The new Church is being built with generous financial help from the Rank Trust and Methodist Churches in other parts of the country. £5,000 still remains to be raised locally and the Methodist Church is asking its members to consider making an interest free loan of £25 upwards until 31st December 1978 to enable the bills to be paid for the new Church. There may be other people in the town who might be interested in helping in this way and they are invited to get in touch with either of the Ministers, Mr G. M. Dutch, 6 Luttrington Court or Mr J. Hill 14 Luttrington Court

TRADE ADS

Jacques School of Stage Dancing. Classes held in Beveridge Hall every Thursday and Friday at 6.30 p.m. Medal classes for ballet tap and acrobatics. Apply at the hall or 5 Mellanby Crescent Electrical Installations, Repairs. Central heating, repairs. D. Bennett Telephone Aycliffe 5638.

Part exchange your 3 piece suite for a new one at Wentons, Beveridge Way. Photocopies made while you wait at the Newton Press Shop, Upper Beveridge Way (next to Hardings). 6p per copy.

R.B.S. Builders for quick service in modernisation, grant work, all types of repairs, no job too large or small. Ring Aycliffe 2925.

Part exchange your bedroom suite for a new one at Wentons, Beveridge Way. The "Write" Gift for that special occasion: birthday, parting etc. See the super display of Parker, Papermate and Sheaffer pens at the Newton Press Shop, Upper Beveridge Way, next to Hardings.

Household alterations, units & fitted cupboards made to order by joiner, glazing & panelling Tel: Aycliffe 3175

Key Cutting Service. Contact Homeplan, Beveridge Way. Painting & Decorating, interior & exterior specialist in high relief wall coverings. i.e. Anaglypta, Lincrusta, Flock etc. Reasonable rates, free estimates. R. Hawkins, 17 Langdale Place Tel: 3788

Part exchange your dining set for a new one from Wentons, Beveridge Way. Outside Catering Service buffets for all occasions Tel: Aycliffe 4764

Wanted Modern furniture, cookers etc Ted Shed Salesrooms, Kingsway Arcade, opp. Co-Op, Bishop Auckland Tel: 61579

Light removals here, there & everywhere. For reasonable prices Tel: Aycliffe 3738

Electrical Insulation, rewires, repairs, etc. D. Clark Tel: Ayc. 4494 5.30-6.30 p.m. Wanted — Old Gold & Silver Tel: Aycliffe 4994

Dog owners — Vitalin the complete dog meal delivered in your area. Phone Crook 2938

Old or antique furniture required by private collector. Tel: Darlington 67972 after 6.00 p.m.

Esso Blue delivered to your door Tel: Darlington 57398

Typewriters new & second hand, bought & sold at the Newton Press Shop, Upper Beveridge Way (next to Hardings) Tel: 2893/6438

Freezer Fish from 48p per lb packed & delivered Tel: Aycliffe 4580

Party Plan — ladies clothing & Tots. Book a party now in your own home. Tel: Ayc. 3924 before 9 p.m.

Gents 10 gear racing cycles £42. Boys Chopper bikes £42. Toddlers 2 wheelers with stabilisers £13. 6 High Barn Road, School Aycliffe.

PUBLIC NOTICE

Counc. Colin Fiddes, Sedgfield District Councillor for Newton Aycliffe No. 1 Ward & for Aycliffe Village, is available on Monday evenings 7-9 p.m. at his home: 4 South Grove, Aycliffe Village, for anyone requiring advice on local Government matters.

L

Learn to Drive

with an Approved
Driving Instructor

IMMEDIATE APPOINTMENTS

— NO WAITING —

Dual Controlled Saloons

Telephone

Aycliffe 4132 or 6139

FRESH CUT FLOWERS

— BOUQUETS —
and WREATHS

Floral Charm

BEVERIDGE ARCADE

TOWN CENTRE

Tel: Aycliffe 2934 (day)
Northallerton 5686 (night)



FLOWERS

FOR ALL OCCASIONS

Next issue from
Newton Press
is due out on
Friday 19th Nov.
copy should reach
us by
Monday 15th Nov.

GALA CONCERT

Tony Baines of Radio Cleveland will compere a Gala Concert to be held in the Recreation Centre on Friday 12th November at 7.15. Artists include the Durham County Wind Band, High Force and Dave Milner.

Tickets are 50p for adults and 35p for senior citizens and children.

All proceeds will go to the "Save the Children" fund, further details from Mr C. Reed, 16 Ritson Road.

ERRATUM

The site for the Chemist Shop reported in our last issue to be at Burnhill was a misprint and should have read BURNHOPE. The shop will be accommodated in the premises formerly known as Wesley Community House.

Shop Early for Xmas

AND GET THE BENEFIT OF OUR
PRESENT LOW PRICES

T.V. Rentals the lowest cost & best service
e.g. Black & White sets from only 50p per week

— Valor Paraffin Heaters —
at LESS than COST — £13.50

★ GIFTS GALORE ★
at

WENTON ELECTRICS

Comfort and luxury on cold mornings with
wall to wall fitted carpets, excellent choice,
fantastic value at

WENTON CARPETS

★ ★ ★ ★

FREE PILLOWS
with a DUNLOPILLO DIVAN SET
reduced from £147.50 to £117.50
SAVE £30.00

2 Only Easy Chairs MRP £79 now £39.50

2 Only Meredew Program Pine Wall Units
MRP £212.50 now £106.50

HALF PRICE

THESE PRICES CANNOT LAST
BUY NOW BEFORE PRICES RISE!

at

WENTONS

'where the customer matters most'

Central Coaches

COACH HIRE 29-53 Seaters

7 ROSS WALK, NEWTON AYCLIFFE

Telephone Aycliffe 2754

Ward Bros. (Steel) Ltd.

LET US SOLVE
YOUR RUBBISH PROBLEMS



Skips available for:

Rubble, Household Rubbish,
Factory Waste, Scrap Metals

Contact us for Efficient Service

WHESOE ROAD INDUSTRIAL ESTATE

WHESOE ROAD, DARLINGTON

Telephone Darlington 58310

"All aboard!" for special train to London

Now is the last chance you have to reserve your seat on the special train from Aycliffe to London.

The train leaves Aycliffe at approx. 0730 on Saturday 4th December, returning at approx 2300. The return fare is £7, a saving of £5.50 on the normal British Rail cheap day return. Children under 14, half fare provided they share a seat with another. Infants under 4 sharing seat with their parents may travel free.

To make sure of your seat contact David Warren, 25 Whinlatter Place, Tel: 4437, or Bill Curtis 14 Greville Way Tel: 2340.

CINEMA SOCIETY

Calling all James Bond fans, only 150 seats available to see Sean Connery in 'Diamonds are Forever'.

So be soon, Wednesday 10th Nov., 7.30 p.m. as usual in the Rec Centre, members and guests welcome.

ROYAL NAVAL ASSOCIATION

The branch committee wish to thank the Mayor and Mayoress Counc. and Mrs E. Elmer, members and friends for their support in making the Trafalgar Celebration Dance a success. Thanks also to the T.A. and staff for their assistance.

Morgan & Stewart Ltd.

"The Brokers who care"

MOTOR INSURANCE

FREE Advisory Service on all types of Insurance and Mortgages at extremely competitive rates
50 Church St., Shildon
Tel: 3627

Weekday mornings 9.30-1 pm
also Thursday evening 4.30 - 6.30 p.m.

an appointment can be arranged in your own home if required

It is God's Will that you prosper (materially) have Good Health (physically), have Eternal Life (spiritually)

find out how at the
FULL GOSPEL CHURCH
Clarence Hall, Finchale Road
Sat. 7 p.m., Sun. 11.15, 6.30
JESUS CARES ABOUT YOU

for further information
Tel: Aycliffe 4883

SUNSLAT VENETIAN & ROLLER BLINDS

Direct from local factory at Factory Prices

- ★ 48 Hours Delivery
- ★ 10 years Guarantee
- ★ Measuring & Fitting Service
- ★ Choice of 18 colours

Phone AYCLIFFE 4881

GIVE A BOOK or buy a BOOK TOKEN

from

Newton Press Shop

NEWSAGENCY & BOOKSHOP

(opposite the Post Office)

Robbies Sandwich Service

LOCAL EXPERTS IN CATERING FOR

Buffets ★ Receptions ★ Parties
Factories ● Social Clubs etc.

Telephone Aycliffe 3709 for quotation

This is an ideal opportunity to go to London for a great day out, and do your Christmas shopping. It is hoped that £100 will be raised in aid of local charities and organisations by running this special train.

NEWTON AYCLIFFE WOMEN'S INST.

A.G.M.

The new committee appointed at the A.G.M. were: Pres. Mrs Meadows, Sec. Mrs Norris, Treas. Mrs Kilpatrick. Committee members: Mrs Atherton, Mrs Blewitt, Mrs Nelson, Mrs Thompson and Mrs Willis.

The competition, a Pretty Jug was won by Mrs Meadows, with Mrs Gunter second. The door prize was won by Mrs Gunter. Overall competition winner for the year was Mrs Willis.

A Coffee Evening is to be held, in aid of W.I. Conference expenses, on Tuesday 9th November at 2 Lilburne Crescent, 7-9 p.m. Tickets from members, 12p.

The next meeting will be held on November 25th at the Teacher Training Centre, Sugar Hill School.

Do you have children aged 7 to 11?

A Public Meeting will be held at the Youth Centre on Tuesday 9th November at 7 p.m. to discuss the possibilities of the formation of a Youth Club for this age group. There appears to be a shortage of Youth Club type facilities for the junior population of the town.

Your co-operation in this venture would be very much appreciated, so please come along, both Mums and Dads, to discuss the pros and cons & help get this scheme underway. If you are unable to attend the meeting but are interested please contact Mr Frank Snayde Tel: 2621.

RUGBY CLUB NEWS

Since the Newton Aycliffe Rugby Club was formed we have ventured from one team to two, with great success.

During the last few weeks the results have been disappointing but we are sure better results are to come.

During the year we hold monthly discos and other social occasions.

If anyone is interested in joining the club and possibly forming a third team, please contact: C. Fielding 6 Ramsey Place or J. Moran 38 Bode Crescent, Tel: 4052.

Last weeks results: 1st team v Houghton II, lost 10-4. 2nd team v Guisborough II lost 48-6.

WANTED

Guide uniform to fit girl aged 11-12 16 St. Godrics Road. Lady wanted to help with housework, 6 hrs. week, 70p per hour Tel: 6322 after 7 pm

Air rifle good cond. Tel: 2719 Dining room suite in teak Tel: 3085

Racer bike or any in good cond. to suit 12 yr. old boy. Dolls pram to suit 6 yr. old Tel: 6300

Coins, British, Commonwealth & Foreign also medals of all sorts Tel: 2967, 17 Church Cl Ladies cycle in good cond 34 Beechfield

Billiards, snooker or pool table Tel: 2719 Silver Cross dolls pram or twin pram in good cond. Tel: 6277

Pair white roller boots with skates size 5 good cond. Tel: 5072 Baby buggy, red/white or blue/white in good cond. Tel: 3862 67 Biscop Cres after 6

Garage, Macmillan Rd. area, 9 Bertie Road Childs elec. Jump Jockey set requires replacement jockey unit Mrs Wake c/o 105 Greathead Crescent

Congratulations THORNTON

Congratulations Les on your 60th birthday, Nov. 16th. Love & very best wishes from Leslie, Jane, David & Steven.

PARKER (nee KELLY) Congratulations Majorie on your 21st birthday. All our love David, Nichola Jane Love & best wishes Carol on your 18th birthday, Nov. 3rd.

From Mum, Dad, David, Bryan, Elaine & Pauline.

PUBLIC NOTICES

Xmas Fayre held by St John Nursing Div. on Sat. 13th Nov at Meth. Church, Neville Par. open 10 am admission 3p.

Toys, gifts, cakes, etc. N/A Chrysanthemum/Dahlia Soc. Would any residents of N/A & Dist. interested in reforming this Society please contact Mr J. Howard, 20 Walker Lane, N/A

Lift offered to Newcastle Polytechnic, share petrol 16 St. Godrics Road

NEW PLAYGROUP FOR ELMFIELD

A Playgroup will open shortly at Elmfield Infant School. Any parents with children between 3 and 4 years of age who wish their children to attend 1 or 2 mornings each week may obtain full details from the Council Offices, Upper Beveridge Way or the Headmaster.



8.00 p.m. on Tuesday 16th November in the Upstairs Room at the Iron Horse Hotel is the time to note for the next meeting of the Guild.

There is no speaker this time but instead a gardening quiz supplied by Pan Britannica Industries, manufacturers of PBI garden products. The quiz is designed strictly for the amateur gardener so come along for an enjoyable evening.

The Sales Hut at the Clarence Chare Allotments is still open on Sunday mornings from 10 to 12 noon and limited supplies of spring flowering bulbs are available. New members welcome at the meeting or the Sales Hut. Annual membership fee 25p.

BRITISH LEGION LADIES SECTION

DIARY
Tues. Nov. 23rd: Vase Party
Dec. 7th: Xmas Dinner
Dec. 21st Film - Save the Children.

TYPING and DUPLICATING Service

Call in for details
NEWTON PRESS
Upper Beveridge Way
Tel: Aycliffe 2893

FOR SALE

Ronson hairdryer with hood £3 ono. Cylinder cleaner with shampoo attachment £10 ono. Ladies navy 1/2 leather coat, 36 £20 ono 3'6" bed frame with head board £1 81 Stainforth Close after 4.30 p.m.

Amstrad 8000 Mk II stereo amplifier ex. cond. 8 watts per channel £15. Jeddson 'Tele-caster' elec. guitar twin pickups suit beginner, waterproof cover ex. cond. £20 Tel: 3435

Wedding dress immac. cond. with head dress & veil, size 12 £20 17 Wallas Road Mothercare sit-in baby walker £2.50 74 Stainforth Close

Aprill shower doll with bath £2.50. Doll in fancy dress £1.50 Tel: 3975 Raleigh Small Rider cycle suit 4-7 yr. old ex. cond. £17 6 Elwick Ave., Byerley Park

Mod. Bungalow suite in tan leather, teak arms vg cond. £20 Tel: 5887 evenings Dreamland elec. blanket unused, double size £10 ono Tel: 6703 after 5 pm

Leeway double pushchair £12 vg cond., turquoise PVC cover. Mothercare potty and toilet seat £1 28 Hawes Place 2 single size nylon bedspreads gold, -£2 each. "Air traffic control" game 50p Tel: 5898

Ladies black leather boots ex. cond. size 6 £10 ono Tel 2976 Auto. washer, front loader, hardly used £76 6 Flambard Walk after 5.30 p.m.

Childs desk & chair ex. cond. £8 Walker, Ricknall Lane End behind Inn Cognito. White pet mouse, cage, play wheel, straw £1 187 Rowan Place

Swallow pram, brown, detach body, ex. cond. £24 95 Hawkshead Place Stamps GB, commonwealth & foreign, sets & singles, packs made up at 25p, 50p, £1 2 Crosby Road

Pedigree Harlequin Great Dane 18 month old, good with children £25 Tel: 3738 after 5.30 3 burner paraffin heater in attractive teak surround £25. Tel: 3738 after 5.30 p.m.

Jack Russel (bitch) 5 month old, vaccinated £15, genuine reason for sale Tel: 6523 'Pepi Poodle' rocker as new £3 23 St Oswalds Walk

Home auto massager slimming machine £20 ono Tel: 6494 after 5.30 & weekends Magnus elec. organ as new, £15 187 Waskerley Walk

Pedal car as new £7. Cassette recorder as new £10. Ballet shoes size 10 1/2 £2. Tap shoes size 12 £2 Tel: 2499

THANK YOU

Lee & Kathleen Stevenson, 19 Macmillan Rd. wish to thank all friends & relatives for their kind enquiries & good wishes on the birth of their son.

LOST

Ladies watch, lost by pensioner, broad black strap lost between Vane Rd. towards Jackson Pl. Sentimental value please hand to police station (small reward)

Black/white cat vicinity of School Aycliffe, 3 Eastfields Road, School Aycliffe

CARS FOR SALE

Gilbert Invader Mk. 3 May '73 £1850 31 St. Aldens Walk Opel Commander GS Coupe R reg. 72 assembly first reg. May 75. 28,000 miles, all extras £1,500 75 Elmfield Pl. after 5 p.m. or weekends

J reg. NSU Prinz taxed Dec. 12 month MoT, engine/body ex. cond. £345 ono 89 Elmfield Place

1971 Vauxhall Viva SL taxed & tested June 77, ex. cond. radio £590 ono 17 Travellers Green

1966 Morris 1000 spare parts new ZX radial tyres £30 ono 64 Winterburn Place

1973 Marina harvest gold £700 ono Tel: 3494 1964 Ford Anglia de luxe MoT Feb '77 1 owner 43,000 miles £100 ono Tel: 2078

WORK WANTED

Plastering & Stippling work—free estimates 27 Paulinus Rd Domestic work wanted for 3 mornings per week. 201 Alston Walk

EXCHANGES

From 3 bed. gas c/h, end ter. Burnhill To similar with large garden & garage if poss. any area considered, 81 Stainforth Close after 4.30 p.m.

From 2 bed. solid fuel, To 2 bed. gas c/h any area con. 73 Eskdale Place

From 3 bed. council house 19 Craggside, Chilton To 2 bed. house in N/A Tel: Rushyford 468

Accommodation

Young man wishes to share flat in N/A Box No. BN1, Newton Press

news mart

FOR SALE

Philips car radio/cassette, 2 speakers as new £35. 1 bar elec. fire new £3 87 Stainforth Close

Youths Campari ski jacket 34 chest £5. Youths 2 piece suit wine colour 34 chest, 29 waist 31 inside leg v.g. cond. £10 ono. Fell boots size 7 in good cond. £1.50 3 Mellanby Crescent

Francesco piano accordion 48 bass with case £20 Tel: 5526 Adidas football boots, screw studs size 4 £3. 36 St. Aldens Walk or Tel: 5491 after 5 pm

Games, Moviemaker, Masterpiece £1.50 each. Pippa doll & friend £1 & 1 outfit Tel: 3961

Girls Woodham school blazer as new hardly worn size 38 £5 9 Rufus Green B & W Portable T.V. £36. Potters wheel for boy or girl £1.50. Large satin walnut wardrobe £7. Kitchen table £1. Elect oil filled radiator £5. Card table 50p. Pair boys wedged shoes £4 Tel: 5597

Wedding dress with long veil & long trail, embroidered with daisies, also silver shoes size 6 vg cond. £20 lot, 73 Eskdale Place

Ladies black ponyskin coat size 14 hardly worn £7. Aladdin II paraffin heater in good cond. £6 1 Stephenson Way Fur animals hand made with safety eyes & noses 201 Alston Walk

Girls Raleigh Rodeo bike 20" wheels suit 9 yr. old, good cond. £15. China cab. with 2 glass shelves, figured sliding glass doors £10. 5' Melamine sideboard £20. 3 piece suite 3 seater, black napperhide orange cushions, good cond. £40 100 Hawkshead Pl

Bontempi 12 chord elec. organ as new with stand and books £25 187 Rowan Place Gents 3 speed cycle Amac £28 10 Swan Walk

Real lamb coat dark brown, full length 42" bust £15 11 Escomb Close

4' fish tank with stand, accessories £15. Kangol crash helmet, full face £8 ono. Baby bath £1 36 Arncliffe Place

Navy pushchair with hood & apron good cond. £10 ono. Record player, 4 speed, needs new needle vg cond. £10 ono. Pifco vibrator massager with cushion & attachments good cond. £10 ono 71 Greathead Crescent

Girls leather tap shoes and ballet shoes size 5 good con. £1.75 Tel: 2030 32lb Calor tank with reg. £8. 32lb Propane £5. Air filter & oil filter to fit Alfa Romeo 1600 £2 199 Waskerley Walk

3ft bed & mattress £6. 3 yds x 3 1/2 yds red pattern carpet £25 Tel: 6302 after 6 p.m. 4ft. divan base good cond., £5 ono 47 Sheraton Road

Microscope mounted with slides (junior model) as new £10 ono 21 Hawkshead Place Full size hand made hobby horses £2.50. Stick dolls and horses £1. Greek style bags £1.50 & jewellery, vases etc. 176 Pennine Walk.

Raleigh 14 cycle for boy or girl 14" wheels, rear carrier holdall vg cond. £25 Tel 3054 Sideboard, Formica £25. Mod Delsh dresser £40. Drop leaf table & 4 chairs £10 10 Elmfield Place Tel: 3418 after 5

FOR SALE

Mini Radiator as new, £10. 20 Burnhope Scalextric over 60 ft. track, 2 cars, 2 throttles, bridge, lap counter, transformer etc. £20. Boys Raleigh Clipper single speed cycle suit 8-12 year old vg cond. £15 25 Fowler Road

Judo suit as new size 2 junior £6 50 Stephenson Way Tomahawk cycle £25 Tel: Darlington 67972.

Venetian blind (Luxiflex) 6' wide x 4' drop. White as new £5 31 Arncliffe Place sundays Ceramic table lamp & shade £3.50. Meat slicer £2. 6 1/2 yds red stair carpet & 2 pieces pads & invisigrips £7.50. New stay-clean oven liners for English Elec., Hotpoint Hi-speed, Revo cookers £5. Suitcase 28 x 16 x 8 £2.50. Morphy Richards Elec. iron £2. 5 Wheeler Green

Approx. 20 yds. stair carpet (36" & 27" widths) autumn colours, all wool £25. Tel: 3712. Mothercare sit/lay pushchair with hood, apron ex. cond., £15 176 Skipton Close, Tel: 6415

2 fireside chairs, green, ex. cond £5 each. Astrakya nylon fur coat, grey WX ex. cond. £10. Girls red leather boots size 12E worn twice £2. Girls long party dress, pink crimp, multi-coloured sash as new fit 5-6 yrs. £1 Tel: 6113.

Vono black vinyl couch 6'6" converts to double bed, ex. cond. £45 Tel: 6710, day. White wedding dress size 12 real Chantilly lace, high neckline, long sleeves, train. Also white veil, 3 tiered, with head dress very long £25 ono. 83 Stainforth Close

Boys brown check coat. Boys navy Raincoat (M & S) height 48" age 3-4 years £2 each. Dolls joiner made cot with covers £2. Weebles playground, swings etc. & 4 Weebles £2. K-Tel record selector £1 29 Garburn Place

2 seater settee with stretch covers & Shepherds castors £3. Pair ladies tan leather boots size 7 side zips as new £3. 2 matching pieces stair carpet, red, 27" wide, 3yds 8" x 1yd 6" £2. 4 Webb Cl.

Mobo Prairie King rocking horse, good cond. £12. 4 South Grove, Aycliffe Village Tel: 3688

Mothercare Sterilisation unit no bottles £1.50. Wedding dress size 14 Tel: 3085 4 storey toy garage with lifts petrol pumps & cars £5. 3m Meccano set with 4 1/2 volt motor £5. Meccano steam engine £6 ono 2 Crosby Road

White rabbits females 6 month old 50p each 4 Bruce Road after 6 p.m. or Sundays

FREE ADVERTISEMENTS

Will readers please note that 'free advertisements' for private sales and wants are accepted subject to space being available.

Every effort is made to insert them on a "first come, first served basis" and any ad left out will be inserted in succeeding issues.

Advertisers can be sure of insertion in a particular issue by paying a nominal space charge of 25p per ad.

FREE ADVERTISING

Readers may advertise their Sales, Wants, Births, Weddings, Marriages, Birthdays, etc., etc. entirely FREE OF CHARGE in our regular News Mart.

To be handed in or sent to Newton Press, Town Centre, (Telephone 'ads not accepted)

NEWTON NEWS & NEWTONIAN — Printed and published by Newton Press, Town Centre Newton Aycliffe. Telephone Aycliffe 2893. Issued free, twice monthly.