

newton news

PRINTED and PUBLISHED by NEWTON PRESS, NEWTON AYCLIFFE, Tel: AYCLIFFE 2893. Distributed Free Twice Monthly



R. Jones with an artists impression of the new club.

Another new club for town by next October

The first stage of the new Newton Aycliffe Labour and Trades Club is expected to be completed by October and at a cost of £50,000.

The membership is open to all members of the labour party and levy paying trade Unionists, of which there are 3,000 working on the Aycliffe Industrial Estate.

There will also be a restricted list for honorary members.

This ultra modern building is to be situated in Horndale Avenue near to the Church of England School now being built.

The usual facilities will be provided and the club will be available for union meetings

and special functions. A car park for 78 vehicles is to be provided and the site when completed will provide an attractive landmark in the area.

The committee steering things through are Coun. Jack Flynn, chairman, Coun. R. Jones, secretary and Coun. Cessford treasurer.

Things start to move on the town

UNITED AUTOMOBILE SERVICES LTD.

Requires DRIVERS

Some experience necessary. Training will be given to reach P.S.V. driving standard.

- Two weeks annual holidays and accrued lieu days.
- Sick Payment scheme.
- Free Travel.
- Trade Union Rates of Pay.

For further details apply to the Depot Official at Darlington, Sedgefield and Richmond Depots, or the Area Engineer, Feethams, Darlington.

● CHRISTMAS LIGHTS ON

The Parish Council has agreed to erect the lights for the Chamber of Trade so the town will look more cheerful this Christmas.

Readers will remember that there was no Christmas lighting last year as the Parish Council could not put the lights up.

It seems they are able to do so this year and the switch on will be the early evening of the 12th December and will remain lit until 5th January.

Many townspeople over recent years have complained that only houses seem to be built in Newton Aycliffe.

Over the last few months, however, things have really started to move. Two new hairdressing salons, new shops in the outlying areas, big shopping unit in the town centre started, Southerne Club built and now another club to be started, another school being built at the moment another recently opened. Another major comprehensive school to be opened in the new year.

Yes things are moving and we find this sort of development encouraging as it raises hopes and morale among those townspeople who had come to believe that Newton Aycliffe was dead!

Even so, there is still a lot to do—the people in Williamfield should not have to trudge miles to the town centre for services which could be provided in their area.

What happened to the marvellous idea of precincts like Neville Parade and Simpasure? Units which provide necessary services such as post office, butchers, chemist etc.

CSS takeover?

INVESTIGATION by IRIS COLLINS

A spokesman for the Council of Social Service in Newton Aycliffe announced on November 21st that the C.S.S. was taking over the Old Peoples Welfare Committee from the Great Aycliffe Parish Council, so dealing with all old peoples welfare on the town.

Apparently this had been decided at a Council of Social Service Executive meeting held on November 20th, although the Great Aycliffe Parish Council did not meet until November 26th when the Old Peoples Welfare committee was on their agenda for discussion. It seems that two labour councillors had already arranged with the C.S.S. that they took over the Old Peoples Welfare committee

before the Parish Council had discussed it, or even any of the organisations and clubs doing work for the Old People were contacted. There are already lots of schemes and clubs being run by different organisations who have close liason with each other and have been operating many years before the C.S.S. came into being.

continued on back page



DEALER
FOR AYCLIFFE AREA

★
QUALITY USED CARS

1968/69G CORTINA 1600E

Executive — Blue Mink, Really Immaculate,
One owner only — 9,000 miles done.
£910

1968 RAPIER FASTBACK

Golden Sand, Radio, Overdrive, as new, one owner 12,000 miles.
£945

1968 VICTOR 3.3 ESTATE

Grecian White, one owner, 16,000 miles.
£915

1968 HILLMAN HUNTER

Dark Blue, low mileage, specimen.
£670

MANY OTHERS INCLUDING

1959 FORD PREFECT

2 pedal control — One owner — 58,000 from new
£75

NEW FORDS

All models for early delivery

Sheppards of Aycliffe Ltd.

HORNDAL AVENUE
AYCLIFFE INDUSTRIAL ESTATE
Telephone: Aycliffe 3132/3

CHRISTMAS CLUB
now underway at

HARDINGS

(next to Laundrette)

TOYS ● FANCY GOODS
JEWELLERY ● WATCHES
CLOCKS

First film show fixed for 10th Jan.



The first film show for kiddies at St. Clare's Church takes place on Saturday 10th January from 10 o'clock — 12 noon.

Already the indication is that it will be a full house.

The membership has to be limited and boys and girls who wish to come to the shows must first get a Membership Card from the Newton News Office in Greenwell Road, rear of the town centre.

Mr. Ted Carr projectionist has organised the programme for the next month and it looks very interesting with **Cartoons, Comedy and Thrills** galore.

First Show Programme 10th January. Bugs Bunny, Daffy Duck, Laurel and Hardy, Mickey Mouse, Stingray, Thrills in Africa, Sea Life, Abbott and Costello.

17th January, Bugs Bunny, Sniffles the Mouse, Daffy Duck, Santos Surprise, Fireball XLS, Sylvester the Cat, Laurel and Hardy, Sea Adventure, Western, Geronimo.

Membership costs 1/- and the admission fee to each show is 1/6d.

C.I. GARAGES will halve your Repair costs

BODYWORK — WELDING
RESPRAY — MECHANICAL
ELECTRICAL

We will give firm quote collect from your home and return. All at half what you would normally pay.

Example: Decoke & Valves grind only £6 12 0

Phone AYCLIFFE 2674

NEWS IS ONLY PAPER RESIDENT

To put all people in the picture—The News is the only newspaper circulated in the town which has its offices and printing works in Newton Aycliffe.

A few people think the Aycliffe Chronicle is printed at the Newton Press and we hasten to tell them it is, in fact printed and published by the Northern Echo at Darlington.

Mr. Ted Carr of 4 Swan Walk, Newton Aycliffe shown here with his home movie equipment.



The Winter Programme at St. Clare's Church is now beginning and from the social point of view there would seem to be activities to suit most tastes.

The "Natters" (Senior Citizens) meet for a natter, table games, sing song and cup of tea every Monday, Wednesday and Friday from 2.0 p.m. to 5.0 p.m.

The young people are catered for by several organisations, uniformed and otherwise, under expert leadership. They meet at the following times:—

Brownies, Mondays, Tuesdays and Wednesdays at 6 p.m.
Cubs Fridays at 6 p.m.
Scouts Fridays at 7 p.m.
Guides Mondays at 7 p.m.
Youth Club Tuesdays at 8 p.m. (Open Club) and Sundays at 7.45 p.m. (Juniors, Church Members only).

There are two Badminton Clubs which would welcome new members, meeting on Mondays at 8 p.m. (Mixed), and Wednesdays at 8 p.m. (Ladies only). The Mothers' Union meet every second Wednesday at 7.30 p.m. and the Womens' Fellowship every

fourth Wednesday at 7.30 p.m. Don't feel "out of things" every organisation would be pleased to have new members to share in their fellowship. If you are interested come along at the appointed time and make yourself known to the Leader, or come with someone who is already a member, or call at the Vicarage and make enquiries.

A suggestion for your preparation for Christmas, why not come along to the Service of Holy Communion on Thursday mornings at 9.30? Breakfast or coffee is served immediately afterwards in the Church Hall—another opportunity of meeting lots of new people. Other week-day services of Holy Communion are on Tuesday evenings at 7.30; Wednesday mornings at 8.0; Fridays at 7.0 a.m. Saturdays at 9.0 a.m. Every Sunday Holy Communion at 9.30 a.m. with coffee served afterwards. Sunday Schools at 11.0 a.m. and Evensong (with Sermon) at 6.30 p.m.

In our plans and preparations for Christmas let us not forget Him, whose birthday we remember.

Working wives upset over Xmas closing

Housewives who work on the Industrial Estate are concerned about the proposed shop closing times over the Christmas period. (The shops are expected to close from Christmas Day which falls on Thursday until the following Monday morning).

We expected the shops to be open on the Saturday after Christmas in order to stock up with fresh bread etc.," said one irate lady.

It seems it is particularly inconvenient for the house wife who works as she has very little time on Christmas Eve to shop for such a long period. The Chamber of Trade says the closing times are only recommended, and it is possible

some shopkeepers have different ideas.

Could we ask those shops who are offering times of opening different to the Chamber of Trade recommendation to contact the News who will print their times in full for the benefit of shoppers. The list will appear in our last issue before Christmas week ending 19th December.

Funerals Completely Furnished.
Professional supervision.
Cremations arranged — Day and Night Service
Enquiries: J. W. GILL, 28 DALTON WAY.
Telephone: AYCLIFFE 2871



Your Money's Worth Banking at Barclays

Money is our business

47 Beveridge Way, Newton Aycliffe



Santa's been to

The Man's Shop 41 BEVERIDGE WAY

LADIES SOLVE YOUR GIFT PROBLEMS

See the

Special display of Xmas Gifts for Men

LEATHER GOODS • FANCY GOODS
SHIRTS • TIES • CUFFLINKS
HANDKERCHIEVES • UMBRELLAS
SOCKS • GLOVES • SLIPPERS
CARDIGANS • SCARVES
CLARK'S SHOES • SWEATERS etc.

TREAT HIM TO A

Suit, Car Coat or Raincoat

ALL READY-TO-WEAR

WHY NOT VISIT US FOR BARGAIN

USED CARS from £30

SKERNE MOTORS Albert Road Darlington
(near gas works) open 6 days a week

GETTING TO KNOW YOU

Regular Feature introducing personalities of Newton Aycliffe



MRS. NANCY PEACOCK

moved from Leeholm to Newton Aycliffe 19 years ago and has seen the town grow from a mud patch. With her husband and two sons (19 and 8) to cater for in addition to getting the mail into the letterboxes in good time — six days a week — what are her problems and ambitions ask The Newton News.

Mrs. P No problems really. The family are all good at moving along in the mornings and of course I have to be on the move at half past five. A postwoman's job is very pleasant once you get used to it. The fresh air and exercise give you an appreciation of the comforts of the home.

N. News We all have a kind of affection for our postmen and women — perhaps because we like to receive letters. Do you find people grumpy when you knock on the door and they are still in bed?

Mrs. P Never. A postwoman can only wait for a certain time for people to answer the door but we all know what it is like being awakened suddenly and having to get down to the door, especially on these cold mornings. But everyone is very nice. No trouble at all.

N. News Last year, it was reported that over 3,000 postmen and women were bitten by dogs. Are you included in those figures?

Mrs. P Dogs can be a nuisance at times. But most dog owners keep them in until the mail has been delivered. And we are very careful to put the letters only in the letter box — not our fingers.

N. News Would you like to live in London or Leeholm. Or America or Australia?

Mrs. P No. I'm quite contented with my home in Newton Aycliffe. It is a nice town and getting better every year. I've been to Italy and other places for a holiday and that's about as much travelling as I want to do — a holiday every year and back to Newton Aycliffe. If you have plenty to do and a comfortable home — you couldn't do more, wherever you go.

KEMBLE SCHOOL OF MOTORING

Prinopl: Terry Farley

R.A.C. Registered Instructor

23 Kemble Green. Tel: Aycliffe 3647

Evenings and Weekends
Member of Institute Advanced Motorists
Member League of Safe Drivers (Grade I)
Silver Star Holder C.A.M.D.A.
GOVERNMENT APPROVED DRIVING INSTRUCTOR

MEYNELL Funeral Services

40, 150, 248 NORTH ROAD DARLINGTON
PRIVATE CHAPEL OF REST
Tel. 2542 Day and Night Established 60 years

Nursery plan for Christmas

Our Christmas Party is on Thursday December 18th to which all the registered children are invited. We hope by then that all the chicken-pox invalids are all recovered to help in our preparations.

There is the Christmas tree to make, which is a big branch painted silver or gold and also the decorations and of course the party hats which everyone must have.

Besides these there are Christmas cards and little decorations to take home.

Then we have to write to Santa Claus to invite him to our party to hand out the presents.

Another Christmas treat to look forward to on December 17th is a Punch and Judy Show at the Methodist Church Hall which has been organised by Mrs. Carter, to whom we extend our grateful thanks.

I would like to take this opportunity to wish all the parents a very happy Christmas and Best Wishes for the New Year from all the staff and myself.

We will be losing at least seven children after the holiday at Christmas to start The Big School, so we will have vacancies for January term, part-time or full-time hours of which are 9 a.m. to 12 p.m., 9 a.m. to 1 p.m. (which includes a cooked dinner and sweet) also 9 a.m. to 4 p.m.

Parents interested and wishing further information, are welcome to come to Beveridge Hall or phone Aycliffe 2100.

Mrs. Y. Elliott



22 Washington Crescent, Newton Aycliffe.

Whilst appreciating the need for facts being placed before the public regarding events which take place between churches and organisations I feel that I must take issue on behalf of the British Legion Branch on your article regarding the Parade on Sunday, 8th November 1969.

Your words 'Confusion and Chaos' used in this article would appear to magnify a minor situation — which occurred at the entrance to St. Clares Church that morning — out of all proportion.

This parade was timed to arrive at 10.45 hours, unfortunately bad weather tends to speed the feet, and arrived at 10.40 hours which coincided with the exodus of the congregation of 09.30 hour service.

No thought seems to have been given by the writer to the fact that this was the first large service given by the Rev. Hall since his induction, barely 10 days prior to the 8th November. This period must have indeed been very hectic for him, to say the least. His explanation from the pulpit confirming this.

Regarding the children referred to as being 'soaked' I may add that these children were immediately returned to the warmth of the Legion Club lounge and served with hot tea and biscuits by the volunteer helper on hand.

It has always been the policy

of this Branch to extend invitations to youth organisations to participate in Remembrance Day, despite to doubt of "whether these youngsters should be involved in these parades". The solemnity of this service must leave an impression on their young minds, and help them to assess the consequence of wars.

Your remark on the "Ugly collection tins used in the Church" are noted and will be acted upon by the Poppy Appeal Committee for future services; in order to merge with the solemnity of the service.

The question of the 'Parade and bad weather' has always been the main concern of the administering Committee. Alternative arrangements had been made in the event of bad weather, which unfortunately did not strike until the parade was well under way.

As an organisation we are pleased to read your last paragraph which congratulates the British Legion Newton Aycliffe on the wreath laying ceremony and the general standard set, "for a good parade under adverse weather conditions."

On behalf of the British Legion Branch Poppy Appeal Committee.

Yours faithfully,
G. R. Wilke.

Ed: The correspondent is thanked for an apt reply to the article.



Startrite Driving School



Ministry of Transport
Approved Driving Instruction
(W. R. ALDERSON)

R.A.C. Reg. Ex-Police Advanced Instructor and
Driving Examiner
Terms and Appointments

18 NEVILLE PARADE Tel.: Aycliffe 2012

THE EDEN BUS SERVICE

Operates a Market Day Service every Wednesday & Saturday from

SHILDON to STOCKTON

Via Stephenson Way-St. Cuthberts Way and the Bridge.

Leaving Newton Aycliffe

9.35 am 1.35 pm 4.35 pm

Leaving Stockton

10.20 am 2.20 pm 5.20 pm

Late journey Saturdays only

Newton Aycliffe 8.35 pm

Stockton 9.20 pm

Should you require a coach for Private Hire, Phone West Auckland 240 or write Summerson Bros Eden Garage, West Auckland. Prompt attention assured.

Plants & Garden Sundries

Interflora Service

E. W. PRYCE

*

WREATHS, CROSSES,

BOUQUETS

MADE TO ORDER

*

4 NEVILLE PARADE

NEWTON AYCLIFFE

Tel. Aycliffe 2934

MINISTRY OF TRANSPORT APPROVED

Roadcraft

Member of I.A.M.

Master Driver of British Safety Council

Class 1 instruction in learner and advanced driving, law and maintenance

Based on police driving system

Learn on dual controlled 1968 Viva D/L

For further information ring Aycliffe 2568

or contact ex-Inspector Crawford

3, THURLOW GROVE, NEWTON AYCLIFFE

VERA'S

LADIES

HAIR STYLIST

3 ORLANDS

AYCLIFFE VILLAGE

Phone AYCLIFFE 2679

Daily to 5 p.m. Fridays

8 p.m. Sats 1.30 p.m.

For regular milk deliveries in Newton Aycliffe

D. & M. GROVER

TELEPHONE

Aycliffe 3533

also Petrol Sales & Repairs at-

Bankside Garage
Heighington

Order early for

Xmas Home fed:

DUCKS TURKEYS

CHICKENS GEESE

CHAS S. BROWN

BUTCHER

PORK BUTCHER

BEVERIDGE WAY

DAILY DELIVERIES

Pretty Newtonian

ITS TOY TIME AT HARDINGS



MARILYN MILLION

20 year old Gentleman's Hairdresser, lives at 15, Tunstall Road, likes ice skating and swimming.



A glimpse into Hardings well stocked toy shop. This time of the year the business is really brisk and Mr. Harding and his staff provide an excellent service in getting Santa's bag filled.

Another child essay

The thing I like best about the past time. Is helping my mummy to make the tea. When I come home from school, I sometimes find my mummy already started on making the tea. So sometimes my mummy asks me to go to the shops for her which is just around the corner. I never refuse. I only have to get some bread, usually, but I sometimes have to go to the shops for a lot of things. Sometimes when I come back from the shops, my tea is ready which is sad for me. Because I didn't make the tea, and I like doing it very much I have told you that already. But I do make the tea, if I am lucky. You can tell from my story that I like to work very much.

Pauline Kennedy,
10, Baliol Green,
Age 9.

ELECTRIC BLANKETS

Nationally Advertised and guaranteed three years. Single Bed Size only 43/6. Double Bed Size 59/6 p & p 3/6. No one need to dread going to bed at these prices. Limited stock and going fast, you won't get another chance. Send now to CMO, NORTH STREET, FERRYHILL. 5.

For the best selection of
Knitting Wools and
Baby Wear—Visit

THE WOOL SHOP

(Pro.: Mrs. E. Hart)

33 BEVERIDGE WAY
NEWTON AYCLIFFE

Telephone :
AYCLIFFE 2927

Also agents for
SPIRELLA CORSETS

Special offer

CAR WASHING OR
DISHWASHING
LIQUID DETERGENT
1/6 per bottle

On purchase of 3 gallons and over of
CLEVELAND PETROL

Used Cars Bargains

Good selection always in stock
Part exchange welcome H.P. and Insurance arranged

HALL BROS. end of Stephenson Way
Telephone: Aycliffe 2640

Order NOW for Christmas
Finest selection of **POULTRY, PORK**
and **BEEF** at:

WEST FARM PRODUCTS
Beveridge Way Phone 2014

For Hair Elegance you are invited to Phone or Call

HAZEL GILL

Ladies Hair Fashion Salon

NEVILLE PARADE — NEWTON AYCLIFFE
Phone: AYCLIFFE 3008



Christmas Gifts at Wentons

Rugs

Bookcases

Electric Kettles

Irons

Toasters

Bureaux

China Cabinets

Watches

Stainless Steel Table Ware

Cutlery Sets

Vases

Cigarette Lighters

Cycles

Gifts

for all the

Family

Easy Terms available

Wenton Home Furnishers
Beveridge Way Newton Aycliffe



JACQUES SCHOOL OF STAGE DANCING

The presentation of medals and certificates on 27th November at the Beveridge Hall, the winners were:—

Bronze Medals

Jeanette Double, Julie Dodd, Michelle Daniels, Tracey Howe, Gail Mitchell, John Walker, Shirley Denham, Sharon Tenwick, Sally Foster, Lynne Dobson, Susan McKenzie, Karen Conway,

Valerie Francis, Carol Sanderson, Stephanie Francis, Lisa Young, Sandra Forcett, Judith Bell, Deborah McKillop, Susan Foster Heather Leishman, Norma Blue.

Silver Medals

Janice Allan, Mandy Johnston, Debra Boyd, Lynne Allan, Colin Dunn, Valerie Shoulder, Suzanne Bushnell, Elizabeth Sinclair, Ann Wearmouth, Veronica Joslin, Bryanna Brown, Marion Cooper, Christine Joslin, Judith Bell, Shirley Stacey, Lynne Parker, Carol Sanderson.

gardens guild

The next meeting of the Guild will be held in the Concert Hall at the R.A.F.A. Club, Barrington Road, at 8 p.m. on Monday, 8th December. The speaker will be Mr. D. Robinson, Deputy Parks Superintendent, Darlington, and his subject will be "Roses".

The Guild hut on the allotments field will be closed during December and January but any member urgently requiring gardening items, e.g. lime, fertilisers, peat, etc., may contact Mr. C. Earp, 1 Macmillan Road, Mr. J. Wood, 15 Balfour Green, or Mr. H. Bilton 3 Clarence Close.

Should you be given a diary for Christmas, make your first entries the Gardens Guild meeting on Monday 12th January and the Annual General Meeting on Monday, 9th February, 1970.

Wedding day to remember

Marjorie Ruth Pounder and George Templeman had an eventful Wedding Day on the 29th November at St. Clares Church.

The Vicar was officiating at his first wedding in the parish it was his 750th wedding since ordained priest and the best man fainted during the ceremony.

It was later found that the van, bringing flowers to the reception, crashed strewing the flowers across the A.1.

The bride whose parents live at 17 Bury Road, is a district midwife at Middlesbrough where the newly weds will make their home. The groom lived at Brotton and works in Middlesbrough.

Councillors Jones, Flynn and Cessford steering the plans for new Labour and Trades Club.

Mr. Ray Brown elected Chairman of C.A.B.

Darlington Deputy Parks Superintendent to talk on Roses.

Row over C.S.S. taking over Old Peoples Welfare.

Miss Jackie recently of Michael Gordon of London is now at Hazel Gill Hair Fashion Salon at Neville Parade.

Ted Carr giving film show for children.

Mr. G. R. Wilkie writes in reply to "news" article.

Headmaster Mr. Pearson and Woodham Burn Comprehensive School.

Parish Council give go-ahead

Women are equal to men! Only some are more equal than others. David Frost's mainly women audience sorting out what was needed to make them equal to men appeared to come to conclusions. After some plain speaking and expressions which shocked us 'not with it's', it would seem that most women are satisfied with running a home, family, husband. And that the husband is very rightly still the master of the house, as long as his wife gets her own way.

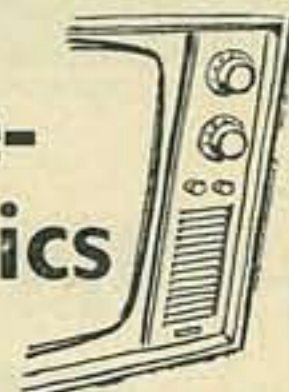
Association annoyed

Have you had someone knocking at your door selling goods on behalf of the Newton Aycliffe Physically Handicapped Association?

If so you have been misinformed—the secretary of the association Mrs. M. Vadgama states emphatically that they do not raise funds in this manner.

Next time someone knocks on your door find out exactly who you are supporting.

tele-topics



THREE GIRLS play on domestic crisis when 18 year old daughter arouses furious conflict with Mum on disclosing plan to abandon parental crowded house in London for spacious lush flat in Kensington. Mum, herself married at 18, refuses to 'understand' that a girl can be free of parent 'trouble'. This was a typical play on freedom from the home (nowhere to hang your clothes—not even a bathroom). Excellently dramatized. Watch out for the Three Girls stories. Worth seeing.

Film "Convoy" another example of last war story excavated from the archives. Star Clive Brook (if you remember him—then you are getting on in year). Picture included small part for Stewart Grainger. Such a small part—he didn't even get a mention in the cast list.

As a point of interest Stewart Grainger's real name is James Stewart, but as there was already a famous actor by the same name (his also being his real name) he conceded, and changed his name to Stewart Grainger.

people in the news

for Xmas Lights.

Chamber of Trade Annual Diner Dance and Xmas Shopping Days.
Bus services to improve for Williamfield.

Nurses helped out by local Taxi firm.

Headmaster Mr. Ablett on Windlestone Residential School for Delicate Children.

Mrs. Elliott on Beveridge Hall Day Nursery for Children.

MONARCHS XMAS FAYRE
Saturday, 6th December
St. Clares Hall

The Monarchs Jazz Band are in great demand at local clubs where they give displays.

They are received very well on these occasions and the displays serve as a grand money raising effort. Clubs who recently had the pleasure of the Monarchs were Cockerton Club and the T.U.C. Club at Darlington.

Eastern Carpet Stores

Make your home brighter for Christmas

Don't delay order your CARPET today!

We have Fantastic Ranges of beautiful WILTONS, AXMINSTERS, TUFTEDS AND NYLON CARPETING

Hundreds of Patterns to choose from
WILTONS From—Sq. Yd. 64/6
AXMINSTERS From—Sq. Yd. 50/0
DUPONT NYLON Sq. Yd. 53/6
100% ACRILAN Sq. Yd. 75/-

H.P. Terms available — Or No Deposit
Credit Terms with up to 2 years to pay.

Generous Cash Discounts available

FREE FITTING AND UNDERLAY

Phone, call or write. Our consultant will be pleased to call any time day or evening.

Eastern Carpet Stores

10, NORTHGATE, DARLINGTON Tel. 2069

SHOP AT HOME — call us for appointment

HILLMAN
HUMBER
SINGER
SUNBEAM



GOOD SELECTION OF QUALITY USED CARS

Station Approach Garage

BISHOP AUCKLAND

Tel: B/A 3456

AUTHORISED DEALER  **ROOTES**

Domestic Services

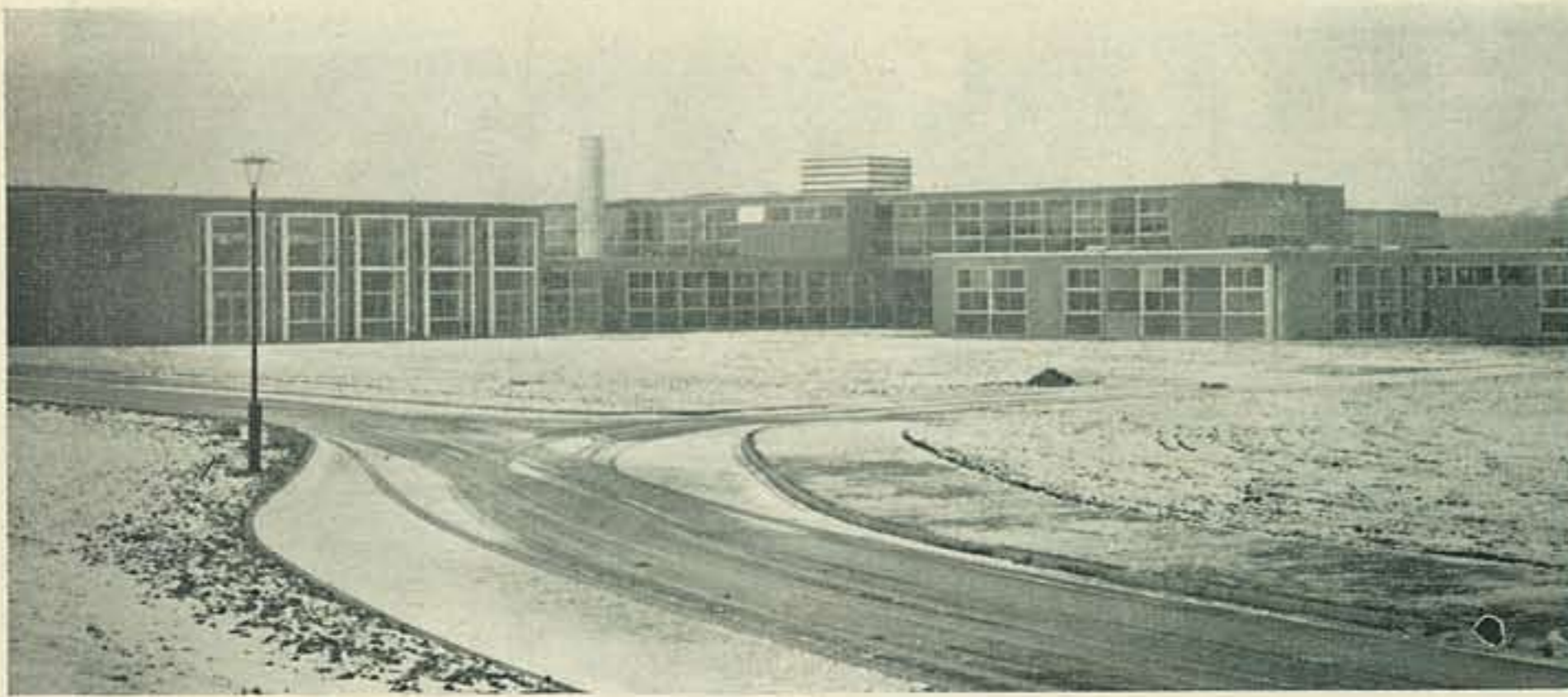
Cleaners repaired and serviced.

All makes of Washing Machines and Vacuum
Estimates free. Satisfaction assured

Write or Call

23, St. Oswalds Walk, Newton Aycliffe.

Newton Aycliffe 3780



For best quality
SMOKELESS FUELS
Graded 'Sunbrite'
Gloco-easy to light

**ALLISON
(Coal) Ltd**

HILLSIDE GARAGE
RUSHYFORD
Tel: 206
Saturday Deliveries

TYRES TYRES
If your tyres don't look too
well, just consult
J. F. BELL
THE REPAIR SPECIALIST
Leaside
Aycliffe Industrial Estate
King Aycliffe 3186

Comprehensive School to be proud of

Have no fear, concerning the emergence of the comprehensive system of education in Newton Aycliffe next year. The new Woodham Comprehensive School is something I am sure we will all be proud to have!

I spent an afternoon having a conducted tour of the new school with its headmaster, Mr. Pearson, a man who shows a great sense of vocation and pride in his profession.

The new school is fantastic, every facility imaginable is available and one gets a feeling of pride and envy at the same time.

It took one hour to walk around the main body and one of the 4 house blocks.

I was staggered by the Swimming Pool, Gymnasium, padded floors in the labs, Concert Hall, Drama and Music Halls all beautifully designed and some with knotted pine.

I got the impression **NO EXPENSE SPARED HERE!!**

A pit is provided for the study of car maintenance, there is woodwork, metalwork, horticulture, science, physics, chemistry departments. Girls have a fantastic area for domestic science, needlework etc., and there is even a facsimile of a flat, where housecraft can be practiced.

The VI Form boasts a coffee bar, comfortable chairs and study area. The school has to be seen to be believed.

Outside we see tennis courts, football fields, an all weather pitch a running track even pedestals, vacant, waiting for a sculptor pupil to display his art.

The Comprehensive system enables every conceivable art, craft and academic study to be carried out.

An important function the headmaster informed me was the welfare of each pupil. The fact that there are 1500 girls and boys does not mean that one is lost in the crowd. The individual problems can be solved better in this environment.

Touching on the minority who fight against the comprehensive system Mr. Pearson stated "The division of children academically is MORALLY wrong and if it is morally wrong then it is educationally wrong."

In the new year Marlowe Hall pupils will move into the new school and by the official opening in September it is hoped the school will have 750 students. Mr. Pearson believes it will take approximately 5 years to fill the school.

The school houses are to be named after Castles in Durham County and the first four are Auckland, Brancepeth, Durham and Raby.

The "news" will follow with interest the progress of this new school and wish Mr. Pearson every success at Woodham Burn Comprehensive we are confident the school will be an asset to Newton Aycliffe.

● C.A.B. ELECT NEW CHAIRMAN

The A.G.M. of the Citizens Advice Bureau was held last week and Miss Riley Lord presided.

The Chairman, Mr. S. M. Harrison reported that there had been a 12% increase in cases over the year and that the town's C.A.B. were also getting enquiries from Chilton Bishop Auckland.

Thanks were expressed to the R.D.C. for grants, without

C.A.B. HOURS

Monday - Friday 2 - 3.30 p.m.
Friday evening 7 - 8 p.m.
9 ISHERWOOD CLOSE
Tel: Aycliffe 3635

which the Bureau could not carry out its work.

Mr. Harrison, Mr. Moore secretary, and Mr. Robinson treasurer all retired.

Mr. Ray Brown manager of B.X.L. was duly appointed chairman, and it is interesting to note that Mrs. A. Brown was C.A.B.'s second secretary. Mr. R. L. Lawrence took over the office of secretary and the new manager of Barclays Bank will be the Treasurer.

Mr. J. Bainbridge was elected vice chairman and Mrs. Earp remains as organiser and along with Mr. Bainbridge takes care of publicity.

Co-operative Funeral Service

OFFICE AND PRIVATE CHAPELS
OF REST

Newton Aycliffe

Tel.: Darlington (By Day) 60166
(By Night) 3203

Tel.: Bishop Auckland (Day & Night) 3525

NOW OPEN

UPSTAIRS SHOWROOM

for following Departments

WATCHES & CLOCKS ● FANCY GOODS
JEWELLERY ● ROWNEYS ARTISTS
MATERIALS

ORDER NOW FOR CHRISTMAS

HARDINGS

(next to laundrette)

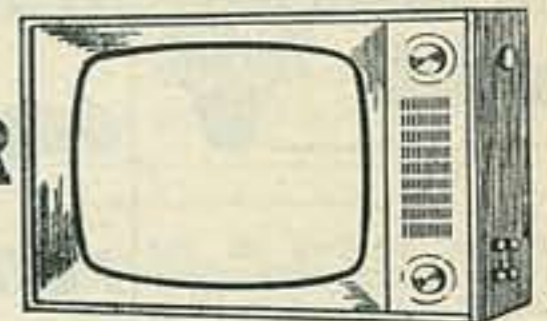
HAWARD & ROBERTSON LTD

REMOVALS AND STORAGE

15-21 GARDEN ST., DARLINGTON

Telephone: 2367

A NEW T.V. FOR XMAS



First Class Service Buy or Rent

A Choice of Many Makes

Pye

H.M.V.

Ultra

Sobell

G.E.C.

K.B.

Ferguson etc.,

Rental Terms reduce each year down to as low as
5/- week

also

Splendid range of Radios, Radiogram's Record
Players and Tape recorders

BUY NOW —

We will keep till Xmas Eve if you wish

WENTONS

25, BEVERIDGE WAY
NEWTON AYCLIFFE

"VACUUM CLEANERS" New or Rebuilt
12 Months Guarantee, Electrolux, Hoover, Goblin etc.
Ring or Call.

ELECTRIC 'O' APPLIANCES

3, COURT ARCADE, SKINNERGATE
Phone DARLINGTON 67281

"FREE HOME DEMONSTRATION"

A HAPPY HUNTING GROUND
FOR THOSE IN SEARCH OF

Christmas Gifts

WHICH ARE ATTRACTIVE
AND PRACTICAL

E. MILLER LTD.

TOWN CENTRE CHEMISTS

Agents for:

RUBINSTEIN - LENTHERIC - COTY
YARDLEY - GOYA - MAX FACTOR
OLD SPICE

See the dynamic new "Burley for Men" sets
CAMERAS - FILMS - ACCESSORIES

Home from home at Windlestone Hall

Windlestone Hall, the former home of Sir William Eden, was opened in 1958 as a residential school for delicate junior boys and girls and senior girls. In 1966 the delicate senior boys resident at Redworth Hall School were transferred to Windlestone Hall to form the present mixed school for delicate children between the ages of seven and sixteen years.

The school, which is administered by Durham County Council, caters for one hundred and twenty pupils and has a staff of forty five including the headmaster, matron, assistant headmaster, teachers, nurses, house mothers and fathers, secretary and domestic staff.

The "raison d'être" of the school is to provide a continuity of education. Before admission many children have lost schooling because of illness and a medical department in the school helps to ensure regular attendance in class. This department consists of four nurses (S.R.N.), two resident and two non-resident. The school medical officer visits every week and a paediatrician from Bishop Auckland General Hospital every month. A local general practitioner calls when required. Remedial amenities offered by the school are healthy location in the countryside, sound and balanced meals and adequate periods of rest and sleep, — these are among the finest medicaments.

Length of stay varies from one or two years to the whole of a child's school life. Pupils

with each other. They learn the value of co-operation, decent behaviour and the acceptance of others. We aim at the acquisition of integrity, self confidence and initiative.

The use of leisure time is important in the residential school. At Windlestone Hall ample space and equipment is provided for out of classroom activities. Creative hobbies are encouraged and provision made for many kinds of receptive entertainment. There are 'Quiet Rooms' where children can rest and relax away from the crowd. The school's wooded grounds and two playing fields are used extensively for outdoor activities which are of great remedial importance to our children.

The delicate child's admission to a residential school should not mean segregation

by C. K. ABLETT, B.A.

Headmaster Windlestone Hall Residential School

are discharged on the recommendation of the school medical officer when they are considered fit enough to return to the normal school or when they have attained the statutory school leaving age which is sixteen years in this type of school.

The ability range of children entering the school is wide. It includes the endowed, the average, the retarded and at times the educationally sub-normal. Many children are in the retarded category because of loss of schooling and consequently remedial teaching of the basic subjects, reading, writing and number are important. Children capable of following courses leading to the G.C.E. at ordinary level, attend local schools providing such courses while continuing in residence at Windlestone Hall.

The residential life of the school helps the delicate child to develop to the full those potentialities which are socially acceptable so that he or she can later be integrated into society at the highest possible level of acceptance. Children learn to live and work amicably

from family and the world outside the school. Parents may visit their children at Windlestone Hall every week-end and they are encouraged to take them home for the day or to school. At a week-end where spend a day away from the distance allows, Senior children travel unescorted to their homes for the day, maintaining their links with family and friends. Children visit nearby towns and villages to shop, to watch sporting events, to attend the cinema.

On discharge a child should have acquired some basic knowledge and some definite tools to use in life. The residential experience should have prepared him for a smooth integration into the community outside the school.

Ed: Having visited the school seen the work and felt the welcome and eagerness of its pupils to talk and meet people I think it is an ideal proposition for the formation of a friendship society similar to the ones formed for hospitals. Anyone interested in forming such a society or can offer any help at all please contact the News.



● SHOPS HAVE 4 DAYS OFF AT CHRISTMAS

The Chamber of Trade has recommended to shopkeepers the following business days over the Christmas Period.

OPEN all day Wednesday Christmas Eve.

CLOSED Christmas Day Boxing Day and Saturday the 27th December.

Closing also, as usual on New Year's Day.

Make sure you have plenty of provisions over the Christmas Week-end.

● TRADERS ANNUAL DINNER DANCE

The Annual Dinner Dance will be held on Wednesday February 11th.

This popular event changes its venue this year to Ramside Hall, Near Durham. Buses will be laid on dependant on demand. Enquiries regarding this function to Mr. H. Wood c/o Midland Bank.

● THANKYOU FROM THE NURSES

The "news" had a very nice report from a lady in praise of our local taxi service Gills. Apparently Gills have been helping our local nurses get to their respective hospitals at times when ordinary transport is not available.

For good

Advertising Results

newton news

PRINTED ON THE TOWN
FOR THE TOWN

Enquiries for space to:

NEWTON PRESS

Greenwell Road . Newton Aycliffe

Telephone : 2893

KAY-BEE Taxis & Coaches

(MILLIGANS)

189, NORTHGATE, DARLINGTON
PHONES: 3626 & 68636

WEDDING CARS A SPECIALITY
LET US QUOTE FOR YOUR GREAT
OCCASIONS

Mini Coaches 12 seaters & 29 seaters



Cut
Christmas
Costs
At

BATCHELORS

(near to Rent Office)

Save money on

SPIRITS



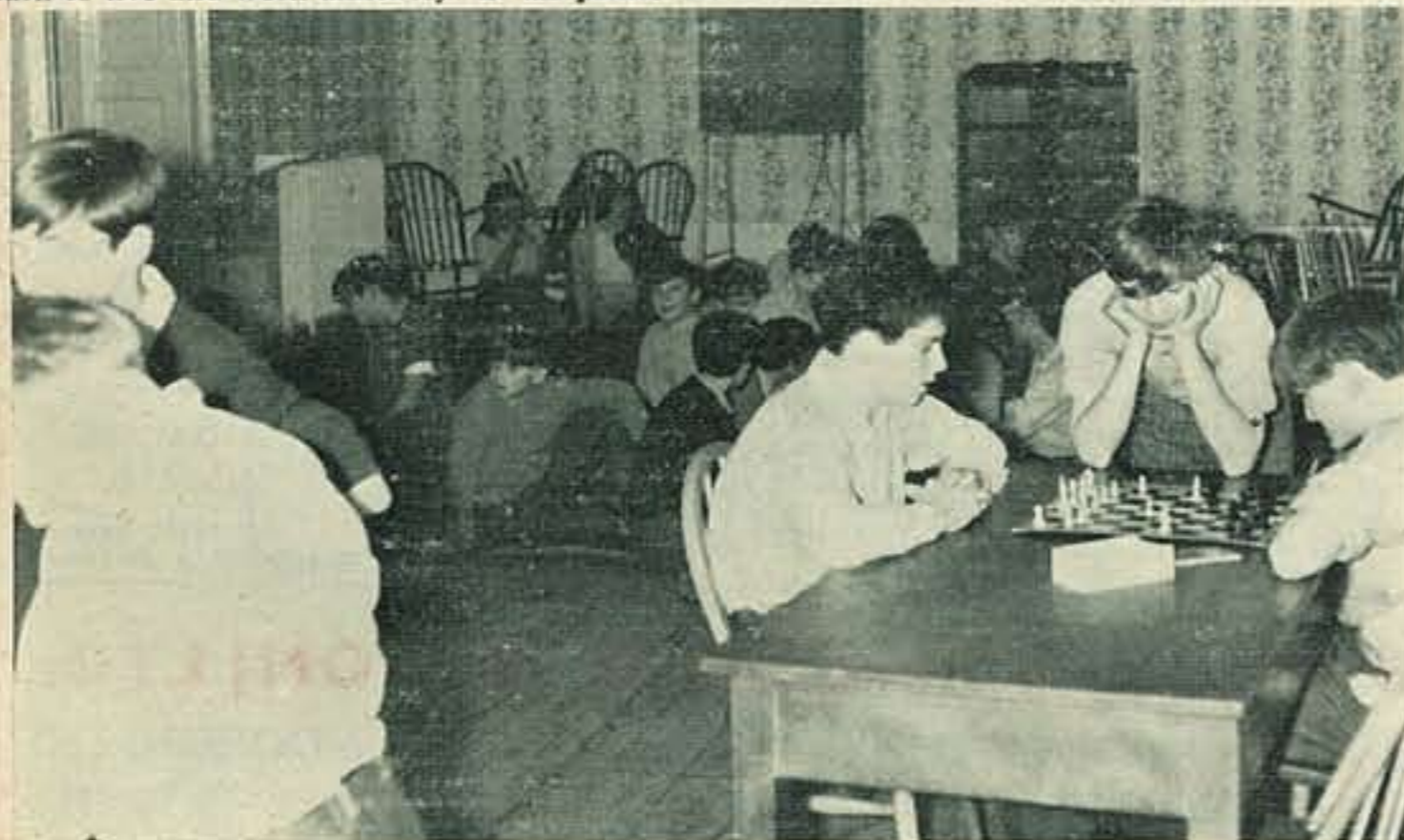
CHOCOLATES

LIQUERS

Ask for details of our DRAUGHT WINES and fill
your Wine Bottles for Christmas

BIG SAVING AGAIN

Orders delivered for Christmas
to any part of the town



For His XMAS PRESENT buy him reflective number plates. Smart by day & safe at night. Easy fix screws included. Pressed plates only 41/6. Deluxe 49/6. p. & p 3/6. State make, year, model and Reg number.
OR: Stainless steel fog lamp, famous make, won't rust. Top quality at rock bottom price of 29/6 p. & p 2/6. Pair 54/6 p. & p 3/6. C.W.O. to C.M.O. NORTH STREET, FERRYHILL 5.

TRADE NOTICES

Learn to Dance (Waltz, Quick Step etc.) Adult beginners class Monday 8.30 p.m. — 10 p.m. Private lessons by appt. Tel: Aycliffe 2085. Childrens classes Monday/Wed./Thursday 4.30 — 5.30 p.m. Sat. 10 a.m.—11 a.m. **Nora Capps Dancing Academy** 5, Lee Green, Newton Aycliffe. **WATCH and CLOCK** repairs taken. Hardings, 66, Beveridge Way.

ENGRAVING, necklaces re-threaded, etc. Hardings, 66, Beveridge Way.

PELMETS made to measure. Hardings, 66, Beveridge Way.

PREGNANCY TESTING

Send Urine sample. Results by Return of Post. Fee £2

MEDICAL FACILITIES

Dean & Chapter, Tel. Ferryhill 755

Tailoring Alterations, Mrs. E. Verdon, c/o Mans Shop, 41, Beveridge Way.

TYPEWRITER RIBBONS 7s. available from Newton Press, Greenwell Road, Tel. 2893.

G. ELLIS

42, Church St., Shildon

WATCH & CLOCK REPAIRS

Bead Restraining, Brooch Pins fitted etc., Engraving, Watch Glasses fitted while you wait — Where possible

We want your interesting news items.

call at the "News Office"
NEWTON PRESS
Greenwell Road,
or telephone 2893
after hours 3276

colin

● Weddings ● Portraiture Supplies
also ANGLING EQUIPMENT
official photographer for the "News."
31, Church Street, Shildon
Tel: Shildon 2193

CAR RECOVERY CLUB

(HEAD OFFICE: 715 ANLABY ROAD, HULL)
MEMBERSHIP 21/- PER ANNUM

- You enjoy complete freedom from worry in the event of major breakdown.
- The Club will get you and your car and your passengers back home from anywhere in England Scotland or Wales absolutely free of charge.
- No limit on distance or numbers of times you use these facilities.
- Just 21/- per year — No extras.
- For membership application form call or phone News Office, Greenwell Road, Newton Aycliffe Tel: Aycliffe 2893 or after hours 2674.

C.S.S TAKE OVER

continued from front page

It must be a bit frustrating to the folk already doing work for the old people in the town, already working with their own valuable committees and advisors to now become a sub-committee of the Council of Social Service, when Clubs do all their own administration and publicity themselves to have a secretary of the C.S.S. minuting and publicising all the work as being done by the C.S.S.

Taking one sub-committee of the C.S.S. as an example, — the welcoming party committee which as everybody knows has been in existence since the new town was born, apparently this sub-committee does all the organising of the parties and sends out all the invitations to the organisations in the town, there must be over a 100 of them and it is the Aycliffe Development Corporation who send out all the invitations to the new tenants.

From this investigation it now looks as if all old peoples Clubs, Churches who have excellent visiting schemes and other organisations doing Old Peoples Welfare work will now become another Council of Social Service Sub-Committee.

Bus services in Williamfield

Commencing Sunday 14th December most of the journeys operated by Eden Bus Services leaving Bishop Auckland at 20 minutes past the hour will operate a circular route in Newton Aycliffe.

Instead of terminating at the Industrial Estate Post Office buses will continue to pass through Williamfield area via Williamfield Way, Emmerson Way, St. Cuthberts Way, Stephenson Way, Pease Way, Williamfield Way.

Full Time-tables can be obtained Free on request from Eden Bus Services, West Auckland. Telephone West Auckland 240.

ANYTHING MUSICAL

AT
Geo. A. WILLIAMS & SON

Blackwellgate - Darlington (opposite Binns)
Comfortable Easy Payments
Trial periods for Pianos and Organs, on a rental basis.
Tuning, Repairs
Phone: Darlington 66224
Radios, Record Players etc.

SALES & WANTS COST ONLY 1/- in the NEWS

WANTED

Paraffin Oil Hall Heater. 30, Westmorland Way.

GENTS CYCLE good cond. apply Box No. AB 1.

COINS and MEDALS bought and sold. Stevens, Town Centre.

WORK WANTED

Qualified / Experienced book-keeper seeks spare time work. Book-keeping, Profit & Loss Accounts, Taxation Estimates. Reasonable. Box No. C25

FOR SALE

MOLESKIN FUR Coat O.S. Perfect Condition. £20 Tel: Aycliffe 2560.

FOR SALE

Aquarium, Stainless steel, 4 ft. with hood £18 o.n.o. 34, Whinlatter Place.

Hoover Spinnerinse, As New £16 10 0. Fan Heater with safety cut out 3 kw £3 10 0. 30, Westmorland Way.

Cut the Costs of Motoring

From Newton Aycliffe turn RIGHT at Harrowgate Hill into Longfield Road for WHESOE ROAD.

SPARES ★ SPARES ★ SPARES

ENGINES

GEAR BOXES

RADIATORS

DYNAMOS

STARTER MOTORS

WINGS

DOORS

EXHAUSTS

etc. etc.

Everything for Motor Vehicles at Reasonable Prices

R. THOMPSON

CAR & COMMERCIAL SALVAGE

WHESOE ROAD DARLINGTON

PHONE: 5495 or 3998

We keep the cost of motoring DOWN Compare our prices

BATTERIES



'STALLITE'
MAIN DISTRIBUTOR
NEW HEAVY DUTY

Written Guarantee
£3/15/- Exchange

SPARKING PLUGS

CHAMPION 3/- EACH
Y PLUGS 4/- each

HOLTS ANTI-FREEZE

15/- Gallon Can
2/6 Pint

DUCKHAMS OIL

12/6 Gallon 12/6
Pint & Quart Tins

MXG 881F

SPECIAL OFFER

HOLTS DE-ICER WITH
SCRAPER REC. RETAIL 6/4
OUR PRICE 5/-

NEW REFLECTIVE NUMBER
PLATES. Best quality. Assembled
while you wait. Approx 10 min. 59/6

TYRES



NEW
AND
REMOULD

All leading makes at under
trade price. Fitted free from
9 a.m. - 8 p.m. Daily
10 a.m. - 1 p.m. Sunday
Wheel Balancing

BATTERY CHARGERS

5 amp 35/-
50/- 50/-
115/-

FRAM FILTERS
OIL and AIR 25%
Off Rec. Retail
Prices

SEALED BEAMS
LUCAS OSRAM
R.R.P. 29/6
Our Price 19/6

RALLY SEAT
COVERS
75/- Each

SILENCERS and
EXHAUST PIPES
25%
Off Rec. Retail

1/4 C. OIL
7/6
Gall. Can
30 & 40 Grade

AS NEW CAR CENTRE [D'TON] LTD.

75 BONDGATE, DARLINGTON (Close to ODEON)

Car Sales and Tyre Fitting next to rear entrance of Odeon — DRIVE IN

AT YOUR SERVICE — 9 a.m. - 10 p.m. DAILY — 10 a.m. - 1 p.m. SUNDAY