



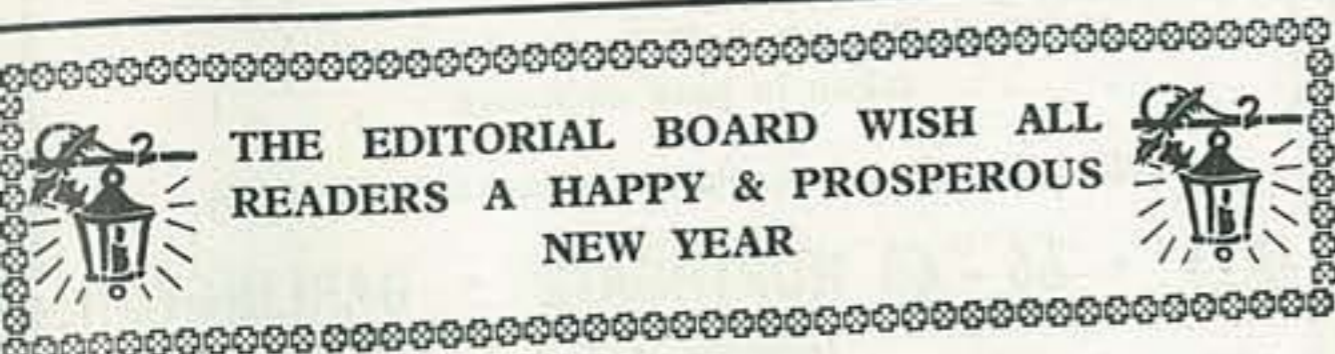
THE NEWTONIAN

NEWTON AYCLIFFE COUNCIL OF LOCAL ORGANISATIONS
Reader Coverage 12,000
Free delivered monthly Circulation of 4,200 copies.

Volume 4, No. 5

Hon. Editor : Mr. R. T. GREENBANK, 17 Bede Crescent, Newton Aycliffe.
Tel. 742

JANUARY, 1963



THE EDITORIAL BOARD WISH ALL
READERS A HAPPY & PROSPEROUS
NEW YEAR

EDITORIAL

Everyone likes to know what becomes of funds raised for various appeals, and often the question is asked, "I wonder what became of the money collected for such and such a cause?". Therefore it is with great pleasure that the statement of account for the monies obtained from the townspeople for World Refugee Year is published in this issue. Some time ago Newton Aycliffe was accused of being a town without a heart, however, the details of collections to which each individual has contributed in some way or another proves that the town possesses not only a heart, but a large and kindly one. Thank you—a magnificent effort.

EDITOR

GONE BUT NOT FORGOTTEN

Mr. Sheridan and his family have finally left the town. He will be remembered for his untiring work on behalf of the townspeople, during his period of office as Warden. He was also editor of the Newtonian for many years. Our good wishes go with him for his future.

BRITISH RED CROSS SOCIETY

Meetings are held in the small hall of St. Clare's Parish Church on Wednesday evenings at 7-45 p.m. Why not come along and join us?

Our Christmas Fayre held on December 1st was a great success. Over 600 people attended the sale, and Father Christmas was in great demand. Over £65 was raised for our funds.

We would particularly like to thank all the Trades people who gave so willingly, and our many friends and helpers for their support.

Thanks also go to our Cadets for all their hard work.

Mrs. E. Cowling has now been officially appointed Commandant. We all wish her every success. Mrs. S. Winsor has been appointed Assistant Commandant and Mrs. M. Lumb, Quartermaster.

Medical loans are available from Mrs. Lumb, 9 Church Close.

S.W.

CORPORATION NOTES

Information about the composition of families in the town is required to provide basic facts for the future development of the town. A questionnaire requesting this information, will shortly be sent to every household for completion. It is hoped that the response will be as good as it was the last time.

ROCK CLIMBING

The response to the formation of a rock climbing club has been most gratifying, and a club has been formed. There is ample room for more members, and all who are interested in getting together on the rocks, or in armchair discussion should contact:- Bob Tibbett, 27 Kemble Green.

NEWTON AYCLIFFE & DISTRICT DOG TRAINING CLUB

The club notifies its many members and friends that the Training nights held in the Clarence Hall on Mondays will be discontinued for a few weeks.

A notice will appear in the press and the Newtonian when the re-opening date has been decided.

I would like to take this opportunity to thank the members for their most generous support.

M.R.

THE BOYS' SHOP

(F. C. WADE)

WINTER SALE

Commences SATURDAY, 5th JANUARY, 1963
2/6d. in the £ discount on all remaining end of season stocks of Boys and Younger Mens 2-piece Suits and Overcoats. Many items greatly reduced.

SEE OUR WINDOWS

A New Blazer to start the January Term.

Complete School Uniforms supplied for :-

Bishop Auckland Grammar School
Spennymoor Grammar Technical School
Wolsingham Secondary School
Woodland Close Modern School
Willington Secondary Modern School
Barnard Castle Grammar Technical School

186 NEWGATE STREET
BISHOP AUCKLAND

Telephone 1136

R.A.F. ASSOCIATION NOTES

At the bi-monthly General Meeting held at the Canopus Club, many subjects and proposals of importance were discussed. Changes regarding Club entertainment were approved which are to come into force immediately.

Mr. Bert Cornley, Branch Welfare Officer, gave a glowing report of work done in the Welfare Field, and stated that funds were at present in a very healthy state. Bert said his main problem was with those members who were unemployed. Employment is a general problem and placing is difficult.

The work of all Welfare Officers is very rarely publicised, for obvious reasons. Many members are loath to come forward in times of trouble, but as we all know, it can be a reassuring thought to know that there is someone who can help, if required. A welfare officer is just an ordinary person, selected because of his tact and common-sense. His work is highly confidential, or to be dramatic 'Top Secret,' and all cases are placed on file under lock and key. This file is handled only by the Welfare Officer, and I am told that the cases vary from financial difficulties to 'just someone to talk things over with.'

Mr. Cornley went on to say that he was available at the Canopus Club on every Tuesday night from 7-30 p.m. onwards, and he appealed for those members who had any type of troubles to come forward. As stated, everything was in strict confidence. Remember that as a full member of the Association, you are entitled to the services of the Welfare Officer, and he will do anything in his power to assist you.

Members are reminded that subscriptions are due commencing from the 1st January, 1963, and that Associate Members must bear in mind that they will be allowed up to the 31st of January to renew.

Notes.

At the Annual General Meeting of the Durham Region, held at Durham Branch Headquarters, Mr. W. Carr was elected Regional Secretary for the third year in succession and Mr. C. E. Manning was elected Treasurer.

H.G.S.

THE NEWTOWN AREA DOG TRAINING CLUB

Classes will continue to be held in the Beveridge Hall every Thursday, evening. Juniors 6-30 p.m., Adults 7-30 p.m.

**WOMEN AND GIRLS—What about a career in a modern Textile Factory****IN THE FACTORY**

Light clean machine work. Good pay and working conditions. Excellent canteen. Assisted Travel from outside districts. Apply by personal interview at the Factory Personnel Department Monday to Friday 2.0—4.0 p.m. Saturday 9.0—10.30 a.m.

PATONS & BALDWIN'S LIMITED
DARLINGTON.

IN THE OFFICES

Opportunities for Shorthand Typists, Typists, Machine Operators, Clerks and Laboratory Assistants. Apply by letter to the Women's Staff Supervisor.

JAYS

NORTHGATE · DARLINGTON

The Store with the up-to-date selection of
Modern Furniture, Carpets, Lino, Bedding,
Electric Washers, Refrigerators, Televisions,
· · Radiograms and Record Players · ·

No Cash Deposit — Your surplus furniture
· · taken in part exchange · ·

Call or phone for expert valuation without obligation to buy

JAYS · 66 - 68 NORTHGATE · DARLINGTON

Telephone 66767-8

TOWNSWOMEN'S GUILD

The Townswomen's Guild were most pleased to welcome Mrs. Dixon and Mrs. Jackson, the Federation Chairman and Treasurer, visitors from several Darlington Guilds, many members and their friends, to the 12th Birthday Meeting held on December 3rd 1962.

Mrs. Drewette, President of our Guild presented the birthday cake and officiated at the cake cutting ceremony.

There were many entries for the seasonal competition "The most attractive Christmas parcel." Mrs. Dixon selected the entry by Mrs. Ronaldson as the winner.

The evening's entertainment was provided by the Drama Group, who presented a short one-act play and a brief topical sketch.

The next meeting will be held on January 7th at 7-20 p.m. in the Beveridge Hall; a varied programme has been arranged and a warm welcome is extended to all ladies who care to come along and join us. The evening's programme will be:-

Speaker: A representative from Messrs Paton and Baldwin.

Subject: Practical hints on knitting.

Competition: A slice of Christmas cake. It is to be hoped that some is left after the festivities.

Sales Table: White Elephants will be on sale—remember what is a white elephant to you could easily be a treasure to someone else.

Social half-hour: A crazy whist drive, usually popular with all members.

February

As the meeting is to be held early in the month and many of you will not have received your Newtonian, here is a brief outline of the evening's plan. Miss Myrella Cohen will talk to us about Jewish Family Life, and the social half-hour is to be in the form of a Brains Trust. Make a note of the date—February 4th.

M.M.G.

CHRISTISON**8 NEVILLE PARADE**

Phone 447

In
Stock -
Paints from:-**DULUX
MAGICOTE
ROBBIALAC**Wallpapers in
stock and to
order**'Pink'****PARAFFIN****2/2**

per

GALLONT.V.
RadioRadiograms
Tape Recorders

by

**ALBA, STELLA,
REGENTONE
and others**Tools by Stanley
etc. in stock or
by return**BEVERIDGE ROLLER DANCE AND FIGURE
SKATING CLUB, NEWTON AYCLIFFE**

On 10th November, 1962, thirty-two boys and girls took part in what proved to be a most successful fancy dress competition. The winners were all Newton Aycliffe girls. First was Miss Linda Welsh, who arrived in Indian style, and later found it hard to believe that she was the winner of the guinea record token. Following Linda was Miss Margaret Thompson, who added a pleasant flavour as a Spanish senorita, and took home as second prize a record token to the value of twelve shillings. A little girl with a big hat was the winner of the third record token. Well done Miss Roaring Twenties, Glenys Cullerton. Many thanks to Mr. and Mrs. Shield who did a grand job with the judging of the fancy dress parade. On behalf of the committee and members Mr. Godfrey Bennett, club instructor, presented Mrs. Shield with a large box of chocolates and Mr. Shield with a box of cigarettes. Many thanks also to Miss Mary Henderson who gave a free skating demonstration, and to Avril Bennett and June Walker who added to the entertainment with a pair dancing display.

The quarterly "Walworth Shield" pair dance competition took place on December 2nd, when twelve members competed. The contest was won by up and coming skaters Barbara Fearn, and Linda Scarlett. "Thank you" must go to the judges from Darlington, Miss Doreen Anderson, and Mr. and Mrs. Fothergill. To add to our "thank you" list Mr. Stewart who always has a very busy time as doorman. Mr. Nelson our disc jockey keeps the old turn table spinning, while Shirley Bennett, June Walker and Avril Bennett are always at the ready with refreshments.

By the time you read these notes we all hope most sincerely that Mrs. G. V. Bennett, Mr. Henderson and Mr. Nelson are all home from hospital and fit once again.

May I on behalf of the committee and members wish all our skaters and friends a Happy New Year, and we hope to see you at the rink one Saturday night. Best of luck.

G.A.B.

MEYNELL Funeral Services**40, 150, 248 NORTH ROAD, DARLINGTON**

Tel. 2542 Day and Night

Established 60 years

YOUR LETTERS

53 KEMBLE GREEN SOUTH,

Sir,

Your correspondent in the December issue of the Newtonian makes the somewhat startling observation that Newton Aycliffe possesses at least five organisations wholly or partly interested in Drama. The town being possessed of such a preponderance of would-be dramatists he suggests the setting up of an outdoor theatre to release this talent on the unsuspecting populace.

While this may at first glance seem worthy of further consideration may I as a humble reader make the following observations:

The town does possess five or more stages, but to date there has only been the Newton Players to tread their lonely boards. Would their winter programme of two plays and a Christmas Pantomime be suitable material for an outdoor theatre in our climate? Such a performance might well receive the approbation of the many Eskimos living amongst us—but for the rest, I doubt it.

There are other societies in the town that have been talking for some considerable time, about producing plays for public performance but should we build this theatre while they are still talking?

The town band and other would-be public performers have many amenities for presenting concerts, both indoors and out but do they take advantage of this.

I would draw your correspondents attention to an old Newtonian proverb "Do not open your shop until you have something to sell."

A. E. Neal,

Ed. comment—The Northern Echo reported on December 12th that strong support was building up in favour of creating an open-air theatre on the site in Burn Lane.

17 CUMBY ROAD,

Sir,

In reply to a letter signed G.G. in the December issue of the Newtonian, as Chairman of the Newton Aycliffe Welfare Clinic Committee I wish to answer the criticism. The voluntary workers responsible for the Welfare Foods have worked for ten years under very trying conditions, with no adequate storage facilities. The particular food referred to is only used by two or three mothers at any one time, because it is so expensive. The precious storage space is therefore used for the popular brands, of which we sell about 100 tins each week.

I would like to take this opportunity of thanking the Voluntary Workers who have so cheerfully left their comfortable homes to be in attendance at the inconvenient clinic and hope we will be in our new quarters early in the New Year.

E. M. Tomlinson.

NEWTON RANGERS F. C.

A Happy New Year, to all our members.

We have had a very good first half of the season and if our first team continue in the same vein for the second half we should finish our first season in the Darlington Church and Friendly League in the first three.

We are still wanting new committee members and anyone interested should contact Mr. B. Pickering, 4 Seton Walk.

G.F.W.

NEWTON AYCLIFFE CRICKET CLUB

We would like to wish all our members a happy and successful New Year. We held our annual dinner at the Gretna Green Inn on November 16th and the following trophies were presented.

1st Team Batting—R. Balmer

1st Team Bowling—J. Holmes

2nd Team Batting—B. Nelson

2nd Team Bowling—J. Thornberry

Plans are being made for the 1963 season and any new comers to the town who are interested in cricket should contact our secretary, Mr. H. Moses, 35 Gilpin Road, who will be only too pleased to give full information.

G.F.W.

GOING AWAY?

Tenants who leave their houses unoccupied for 24 hours or more during the winter period should be sure to turn off the water and drain down the system before leaving. Last year, several tenants who failed to accept this warning were hurriedly called back to a house flooded out with water caused by the freezing up and bursting of water pipes during their absence. In addition such tenants have to bear the cost of repairing the burst pipes.

FAMILY PLANNING ASSOCIATION

Clinics are held in the Beveridge Hall EVERY Tuesday from 2 p.m.—3-15 p.m. There is a lady doctor in attendance.

The clinic will be CLOSED on January 1st.

Information and appointments from Mrs. Thomas, 84 Cockton Hill Road, Bishop Auckland. Tel. Bishop Auckland 2162.

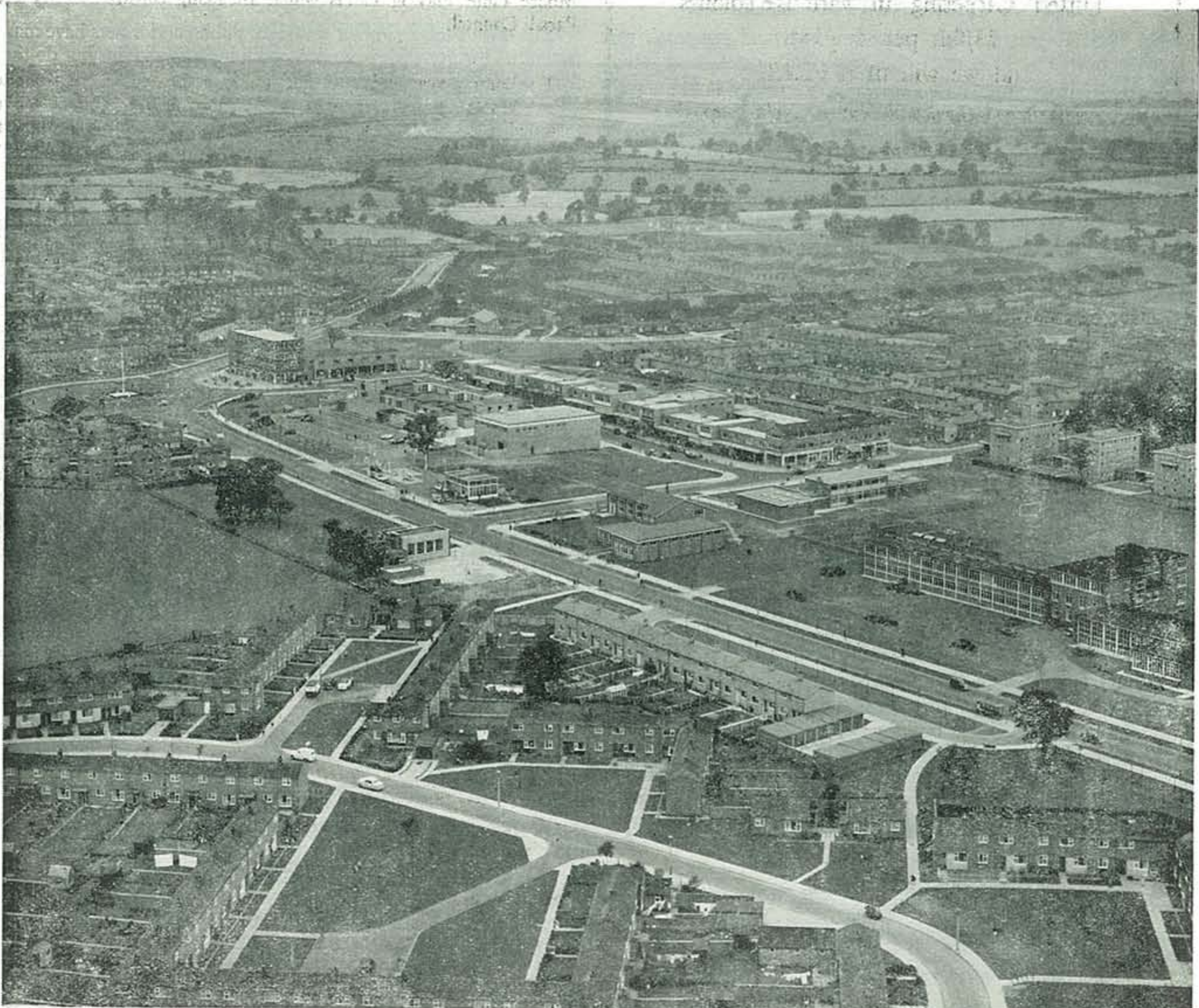
TOWN CENTRE NEWTON AYCLIFFE

Photo By Industrial Pictorial Services.

WENTON**Home Furnishers**

(PRIVATE COMPANY)

*Sole Directors: G. Machin, H. Hope, S. Moss***GREAT
JANUARY SALE**

Our Sale is noted for its Genuine
Bargains of Furniture, Electrical Goods,
Divans, Bedding, Curtaining, etc.

SPECIAL OFFER for this Sale

Tufted Carpeting in various colours
19/6d. per sq. yard
and we will fit it **FREE**

*Provident and Hartlepool Mutual checks accepted***LATE NIGHT CLOSING FRIDAY 8 P.M.****25, 27 & 58 Beveridge Way, Newton Aycliffe***Telephone: 540***THE NEWTON PLAYERS**

The Dramatic Society would like to thank our splendid audiences who supported so well our first play of the season. We also thank those organisations who were kind enough to give up their meetings to enable us to use the Beveridge Hall on consecutive evenings.

Our annual pantomime "Babes in the Wood," is booked for this month as follows:-

Friday, January 18th 7-30 p.m.

Saturday, January 19th 2 p.m. & 4-30 p.m. (2 performances)

Friday, January 25th 7-30 p.m.

Saturday, January 26th 2 p.m. & 4-30 p.m. (2 performances)

The pantomime, especially written by Mrs. Wallace, will last approximately 90 minutes, and will be performed in the Beveridge Hall. Prices of admission will be, children 1/-, adults 2/-.

With work on the panto nearing completion the society has been sifting the various play catalogues for the final play of the season, and although a decision has not been reached, we are in the happy position of having many plays to choose from, as we have a membership larger than at any time during our ten years of existence, and are no longer tied by having only a small percentage of acting members.

Meetings and rehearsals continue in the upstairs room of the Community Centre on Thursday nights from 8 to 10 p.m. during which time there is a general drift in the direction of refreshments, where at least half a dozen simultaneous conversations and discussions are continued so long as time allows. New members are always welcome.

H.J.N.

NEWTON AYCLIFFE PROGRESS REPORT

As we are now at the beginning of another year, the time is appropriate to review once again the progress made in the development planned for the immediate future.

The main development has once again been in the field of housing, all of it being confined to Precinct D.3 bounded by Burn Lane and Central Avenue. Here, more than 300 dwellings, including many built specially for sale and lease, were completed during the year and a further 400 were in various stages of completion, at the end of the year.

The past year has also seen the completion and opening of the Milton Hall Secondary Modern School, the Roman Catholic Primary School and the British Legion Club. The Health Services Centre and Public Library in Dalton Way and the Church for the Latter Day Saints, the Old Peoples' Hostel in Shafto Way, which were expected to be completed in 1962, are not yet functioning although the buildings are now completed. A start has been made on the building of a T.A. Headquarters adjoining Greenwell Road and an infants' School adjoining Stephenson Way and these should be completed in 1963 as should also the Cemetery and the Moore Lane Playing Fields which are being constructed by the Parish Council.

The coming year will see a start made in the development of the south-western area of the town, where more than 1,000 houses are planned to be built. The construction of roads and sewers for the first stage development should start in the Spring and be followed in October by house building.

In the town centre, apart from the opening in July last of the new Supermarket for Fine Fare Ltd. development has been at a standstill because of the need to replan the layout of the centre. The rapid growth in the number of car owners, in the town and the surrounding area served by the town centre has compelled the Corporation to accelerate the closure of the central area to vehicular traffic so as to segregate pedestrians from vehicles and to provide more car parking space adjacent to the pedestrian area. The Corporation's proposals are now receiving the consideration of the Ministry but the position has become more complicated by the recent representation of the County Council to the Ministry for the planned population of the town to be increased to 40,000. Should this materialise a further revision of the town centre layout will become necessary to provide the services needed for a population of 40,000 and in that event no further building in the town centre could be expected for several months.

Newton Aycliffe with the adjoining industrial estate has a very bright future which should help to bring happiness and prosperity to all 'Newtonians.' The Corporation extends to all residents its sincere wishes that happiness and prosperity may be theirs throughout 1963.

CAN WE HELP YOU?*Have you any Worries or Problems?*

For the 101 Questions you want answered
ask your local

CITIZENS ADVICE BUREAU**Community Centre, Finchale Road.***Open Every Friday 2-0—3-30 p.m. and 7-30—8-30 p.m.*

EXPRESS TYRE SERVICES

For all your Tyre needs.
Good stocks of all sizes.
Town & Country—Remoulds
all sizes in stock.

All Fitted Free.

Satisfaction Guaranteed

ANTI-FREEZE 3/6 per Pint

See us first and you will not
regret it. Full range of
accessories in stock.

Provident and Hartlepool
Cheques accepted, for all
goods supplied.

**37/38 MARKET PLACE
BISHOP AUCKLAND**

Tel. Bishop Auckland 538

Tel. 2696 & 3081

Wm. Harker & Sons
FUNERAL FURNISHERS
King Street, Darlington

Cremations arranged—any distance
Awarded 11 Diplomas of Merit

MOTOR INSURANCE

Immediate cover at the lowest
rates. Up to 50% No Claim
Bonus allowed on transfer.
E. W. KNAPTON, 8 Ken-
sington South, Cockton Hill
Road, Bishop Auckland. Tel:
1177. Newton Aycliffe 759.
Open till 7 p.m. Free quotations



"For
Everything
Musical"
8-10
TUBWELL
ROW,
Darlington
Tel. 66224

ROBINSON AND HUGILL

Property Repairers

For all types of building materials,
glazing, all classes of joinery work
and electrical installations

**GREENWELL ROAD
NEWTON AYCLIFFE**

Tel. 383



'Startrite'
Driving
School

CORRECT DRIVING TUITION
By ex-Driving Examiner who was
also Police Advanced Instructor.
Registered R.A.C.

**18 NEVILLE PARADE,
NEWTON AYCLIFFE.**
Tel. Newton Aycliffe 448.

THE SKETCH CLUB

Members can look forward to a year full of interest and enjoyment, a commencement in this direction will be the first annual meeting to be held at 2 p.m. on January 19th when the officials for the year will be elected, the summer programme arranged, and the date and place of the clubs first exhibition decided upon.

R.B.

Thought for the Month
IDLE BODIES ARE BUSYBODIES

THEFT OF WARNING LAMPS ENDANGERS LIFE AND LIMB

Who in Newton Aycliffe is so callous as to create risk of a serious accident by removing red warning lights around road and footpath excavations? Several have been stolen recently and without warning lights, excavations are at night time a serious danger to pedestrians and motor vehicles. The police are investigating the thefts and it is hoped that the culprit or culprits will be caught before their further depredations do actually cause a serious accident.

HAWARD & ROBERTSON LTD.

REMOVALS AND STORAGE

15-21 GARDEN STREET, DARLINGTON

Telephone: 2367

WOMANS COLUMN

A very Happy New Year to all my readers. What will 1963 bring for the women folk of the town? Two things for certain, one, the transfer of the Public Library to the town centre; two, the housing of the Welfare Centre in the same premises. It is an advantage to have both these amenities under one roof in the centre of the town, because all of you come to the shopping centre with reasonable frequency, and to have the library and welfare, in a central position, is fairest for the majority.

Resolutions

January is the time for good resolutions to be made and if you are like me—seldom kept. However, one I intend to make and keep, and I hope some of you will also do, is to give more support to the Newton Aycliffe Sports Club Show. It is so necessary to have lots of entries to make a show a success, there is no pleasure for either judge or exhibitor if only two or three entries go into each section. This year let us rally round and show just what the women of the town can achieve, and by so doing give the club the support it deserves. Make the slogan—Prepare early.

A suggestion

There must be a fair number of women in the town who would welcome, and support a shop selling dress material by the yard; to have to travel to a near-by town by bus adds considerably to the cost of what should be an inexpensive garment, also many toddlers do not care to be in crowded shops where all they can see is the human figure from the waist down, or shop counter to floor level. If by the time this suggestion appears in print it has become a reality so much the better.

How to keep warm on bitterly cold nights

A friend gave me a simple, but most effective way of keeping warm in bed; instead of having the eiderdown on top put it under the bed-spread or if the bed-spread is a thin silky one, sandwich the eiderdown between the blankets—try it, you'll be so snug you won't want to get up.

Knitting

The same friend came up with this advice; when making up knitted garments crochet the seams together instead of the more usual method of sewing up, the exception being raglan sleeves which are stitched from side to side. The crochet gives a very firm seam which does not stretch or sag.

M.M.G.

Start the New Year . . .

WITH ONE FIRM RESOLUTION IN YOUR MIND
GO TO

BRIDGE GARAGE

Horndale Avenue, Aycliffe Industrial Estate.

(Proprietor E. V. Hodgson)

Telephone: Aycliffe 3392

SALES AND SERVICE

For all makes of Petrol and Diesel Vehicles

Welding and Body repair work,
Spraying and Insurance Repairs

Estimates Free

ANY MAKE OF NEW CAR SUPPLIED

Have the value of Personal attention for your Car

**"Jacques"**

Hair Stylist

Tel. Newton Aycliffe 520

A

HAPPY NEW YEAR
TO ALL OUR CLIENTS

from

MRS. CAREY & STAFF

Salon:
8 Beveridge Way,
Town Centre**Aycliffe Laundry Ltd.**

and

Spruce, the Cleaners

EXCLUSIVE

"SPRUCETEX"**Re-texturing**

at NO extra cost

Telephone Aycliffe 2212

GREAT AYCLIFFE SPORTS & ATHLETIC ASSOCIATION

Newtonians are probably aware in a vague sort of way that there now exists in the town a Great Aycliffe Sports and Athletic Association. What you may not be aware of is the exact purpose of this organisation and why, when we invite you to become members, you should even consider joining. It is therefore the intention of the management committee of this organisation to describe more fully in the February edition of the Newtonian, what the organisation's aims and objects are. Hoping thereby to arouse the interest of you all and gaining sufficient members to make the organisation worth while and in a position to apply for grant aid.

The first public meeting at which it was agreed to form the Association for the purpose of administering the proposed new playing field at Moore Lane was on September 8th.

At this meeting a steering committee was elected for the purpose of drawing up a constitution. At another public meeting on October 29th the constitution was accepted and the management

committee elected. It was agreed that the membership fee should be 6d. per person until the end of the year 1962, subject to review by the management committee. This committee met on Nov. 26th and voted in favour of the membership remaining at 6d. per person per annum until such times as the playing field and amenities are actually in existence.

Substantial membership must be in evidence before grant applications can be made, which explains the rather confusing point of seeming to be paying for nothing but as previously stated this will be gone into in greater detail next month.

The Annual General Meeting has been arranged for March 18th. We are telling you in good time in the hope that all of you will be interested enough to attend. It applies to all age groups of course.

The present management committee members are:-

Councillors, A. Cessford, J. Conlon, R. H. McKee, W. T. Strahan, S. Brown. Messrs. M. Lowery, M. Richardson, A. Bellfield, G. Robson, R. Smith, D. Aisbett and Mrs. M. Spark.

Officers: Chairman, Inspector W. L. Lown, Vice-Chairman, Mr. A. Walker., Acting Secretary, Mr. F. E. Batley, Treasurer, Mr. G. Lawson.

Co-opted Councillors H. N. Shafto and Y. McLaughlin, Darlington Rural District Council.

Councillors J. Dormer, J. L. Hughff, (Aycliffe) and D. Vickers.

It was also agreed that the Aycliffe Development Corporation should be invited to send a representative and also the Central Council of Physical Recreation.

The Management committee meet again on January 28th at 7-30 p.m. in the Council offices, Churchill House.

M.C.L.S.

★ One-stop shopping in comfort at your finest food store

★ Better bargains in branded grocery lines

★ Fresher provisions

★ Superb meat and poultry

You fare fine at FINE FARE

FINE FARE SUPERMARKET

TOWN CENTRE .. NEWTON AYCLIFFE

COMMUNITY CALENDAR FOR JANUARY

Beveridge Hall

- Sunday:** Town Band 10-30 a.m.
Assembly of God Sunday School 2-30 to 4 p.m.
Skating 4-7 p.m.
- Monday:** Library 2 p.m.—4 p.m. and 5 p.m.—7 p.m.
Townswomens' Guild 7-15 p.m. 7th January
Labour Party (Women's Section) 7-30 p.m.
14th January, 28th January.
- Tuesday:** Welfare Clinic 9-30 a.m.—11-30 a.m. on
15th and 29th January
Family Planning Clinic 2 p.m.—3-30 p.m.
Skating Club 7 p.m.—10 p.m.
- Wednesday:** Library 2-4-30 p.m. and 5-7 p.m.
Dance 7-30 p.m.—10-30 p.m.
- Thursday:** 9-30-4 p.m. Welfare Clinic
Dog Training Class 6-30 p.m.—10 p.m.
- Friday:** Library 2 p.m.—4-30 p.m. and 5 p.m.—7 p.m.
Table Tennis Session 7-30 p.m.
Newton Players 18th and 25th January 7-15 p.m.
- Saturday:** Newton Players 19th and 26th January 1-30 p.m.
Skating Club 7 p.m.

Clarence Hall

- Sunday:** Jehovah's Witnesses 3 p.m.—4 p.m.
Salvation Army 6 p.m.—7 p.m.
- Monday:** W.V.S. Children's Nursery 1-30—3-45 p.m.
Canine Club 7-15—10 p.m.
- Tuesday:** Whist Drive 7-30 p.m. Open to all
- Wednesday:** W. V. S. Meeting 2 p.m.—4 p.m.
Territorial Cadets—Evening
- Thursday:** Jehovah's Witnesses 7 p.m.—9-30 p.m.
- Friday:** Assembly of God Youth Club 7 p.m.
- Saturday:**

Committee Room

- Sunday:** Loco Spotters 7 p.m. to 10 p.m.
Sketch Club 2 p.m.—4 p.m.
- Monday:**
- Tuesday:** Welfare Clinic 9-30 a.m.—1 p.m. 15th and 29th
January
F.P.A. Clinic 2-3-30 p.m.
Toc H 7-30 p.m.—9 p.m. 1st, 15th & 29th January
- Wednesday:** Dance Club 7-30 p.m.—10-30 p.m.
- Thursday:** 9-30 a.m.—4 p.m. Welfare Clinic
Probation Officer 4 p.m. to 6 p.m.
Canine Club 7-30 p.m. 3rd January
Labour Party 7-30 p.m. 10th January
- Friday:** Chess Club 7-30 p.m.—10 p.m.
- Saturday:** Skating Club 7 p.m.

Warden's Office and C.A.B. Room

- Sunday:**
- Monday:** 2 p.m.—3 p.m. Registrar (Warden's Office)
- Tuesday:**
- Wednesday:**
- Thursday:** 2 p.m.—3 p.m. Registrar (Warden's Office)
- Friday:** 2-3-30 p.m. C.A.B. Session and 7-30 p.m.—
8-30 p.m. C.A.B. Session
- Saturday:**

Upstairs Room

- Sunday:** Salvation Army 10 a.m.—11 a.m. & 2 p.m.—4 p.m.
- Monday:** Whist 7-30 p.m.—All welcome
- Tuesday:** St. John Cadets (Girls) 6-30 p.m.
- Wednesday:** Town Band 6-30 p.m.
- Thursday:** Salvation Army 6 p.m.—8 p.m. Drama Club
8 p.m.—10 p.m.
- Friday:** 6-30 p.m. St. John Cadets (Boys)
- Saturday:** Town Band (Juniors) 10 a.m.

TRADE NOTICES

Rate 2/- per line.

G. Ellis, Watch and Clock
Repairer. Repairs now collected
at:- Hardings, 66 Beveridge Way

CHIMVAC—Electric Sweep
Write or call 31 Carileph Close
(off Stephenson Way). Tel. 498.

LEARN TO DRIVE with a
qualified instructor at Hobson's
Motoring School, R.A.C. Reg.
Pick up at Aycliffe. 90% pass at
first attempt, 9% at second test.
Enquiries to South Road Service
Station, High Etherley, Bishop
Auckland, Tel. W. Auckland 500

STARTRITE DRIVING
SCHOOL offers unbeatable ex-
perience at your service. The
instructor's qualifications are :-

R.A.C. registered & qualified;
Ex-Police advanced instructor
Ex-Ministry examiner;

Regional examiner for Com-
pany of advanced motorists.

Terms reasonable. **YOU MAY**
PAY AS YOU LEARN IF
YOU WISH !!!

18 Neville Parade, Tel. 448.

For your Radio, T.V. and
Tape Recorder Repairs 'Phone
Aycliffe 2221.

COAL all winter special prices.
Large best coal 8/3 per cwt.
Special House Nuts 7/3 per cwt.
Good supplies and delivery.
Clean and Red Hot Coal
Ring West Auckland 278 or
Write Maires Coal Depot,
Evenwood.

WE deal with all main Furniture
and Carpet Manufacturers. Ask
for Catalogues. Wenton Home
Furnishers.

IF you have an account with us
and find yourself in difficulty
we can help you immediately.
Wenton Home Furnishers.

THERE are still plenty of used
Furniture and Electrical items
at our second-hand shop. Ask
for Wilf at Wenton Home
Furnishers, Greenwell Road,
(Behind Woolworths).

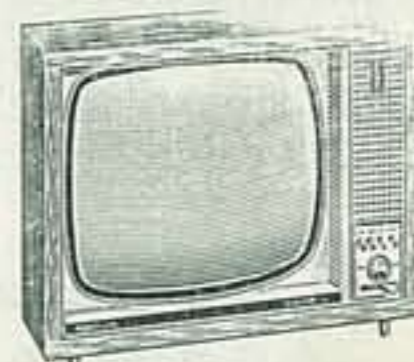
EXCELLENT part-exchange
terms for your old furniture,
T.V., etc., Wenton Home
Furnishers.

WE take Provident and Hartle-
pool Mutual Checks for
Furniture, Electrical Goods,
Bedding, Carpets, etc.
Wenton Home Furnishers, 25,
27 & 58 Beveridge Way, Newton
Aycliffe.

CARAVAN STORAGE Three
sites available. Apply: Clerk of
the Parish Council, Third Floor,
Churchill House, Newton
Aycliffe.

THE FOLLOWING Pupils of
Mrs. Ford were successful in
their recent Pianoforte Exam-
ination in the Royal Schools' of
Music :- Grade III, Dennis
Miller, Linda Gordon. Grade
IV, Roy Brittain, Megan Bellis,
Gail Lodge.

BUY as
you RENT!
Television



QUALITY SETS FROM
BUSH EKCO PYE

Have the best of
both worlds from

WHITE BROS.

43 DALTON WAY,
NEWTON AYCLIFFE
or 20 SKINNERGATE,
DARLINGTON

Paraffin Deliveries!

For your convenience a weekly
Pink Paraffin Delivery Service
to all parts is now in operation. Any
quantity from one gallon upwards
delivered direct to your door.

For a call, please ask at the shop or
ring Newton Aycliffe 436.

HARDINGS,
66 BEVERIDGE WAY,

THE NEWTON AYCLIFFE OVER SIXTY CLUB

A happy and prosperous New Year to you all, and a word of
thanks to all those friends who have helped us during the past
year, which we are happy to record has been most successful.
We look forward to greater effort and success in 1963.