



THE NEWTONIAN

NEWTON AYCLIFFE COUNCIL OF LOCAL ORGANISATIONS
Reader Coverage 12,000
Free delivered monthly Circulation of 4,200 copies.

Volume 4, No. 4

Hon. Editor : Mr. R. T. GREENBANK, 17 Bede Crescent, Newton Aycliffe.
Tel. 742

DECEMBER, 1962



THE EDITORIAL BOARD WISH ALL
READERS A HAPPY CHRISTMAS AND
A PEACEFUL NEW YEAR



EDITORIAL

As another year draws towards its end a backward glance through the past twelve months shows that so far as the town is concerned has not been a spectacular year, but one of quiet steady progress. It has seen the opening of the Roman Catholic School which accommodates approximately 250 children, the Milton Hall Secondary Modern School which provides for a further 450 young people.

The necessity for these schools is seen when you consider how the town's population grows; as is natural in a town the size of ours the populace fluctuates month by month, but with new houses built the incoming exceeded the outgoing by over 1000 in 1962.

The Fire Station has been opened, and that it was essential is seen—and heard—by the frequency of the siren.

The British Legion Club, an amenity which provides a special meeting place for the men of the two World Wars, came into being early this year.

A new Super-Market made its appearance for the benefit of everyone, and the town's internal bus service has also begun; it is

agreed only in a small way so far, but you can look for an increase in the near future.

So you can see by these reminders of that which has been accomplished during the year, progress is being steadily maintained. Year by year more and more is added to the town to make it a pleasant place in which to live, and it isn't done at the drop of a hat, it means a tremendous amount of planning and hard work, so those who think that the progress is rather slow should pause for thought.

Next year will see the opening of the Old Peoples Hostel, the Ambulance Depot, and the building that will house the new library, giving better premises and a larger selection of reading matter, and accommodating the Welfare Centre in more modern conditions.

The Editor wishes all of you A VERY HAPPY CHRISTMAS AND A PROSPEROUS NEW YEAR, together with a sincere THANK YOU to the one hundred voluntary workers who deliver the Newtonian each month.

EDITOR

WENTON

HOME FURNISHERS

Directors : H. HOPE G. MACHIN S. MOSS

TAKE YOUR PICK FROM HUNDREDS OF SUGGESTED CHRISTMAS GIFTS.
A SMALL DEPOSIT—UP TO 38 WEEKS TO PAY—YOU NAME THE GIFT, WE WILL SUPPLY IT

Typewriters	£19 19 0	20/- Dep. 37 Pmts. of 10/6
Electric Blankets	£4 5 0	10/6 Dep. 32 Pmts. of 2/6
Moderc Clothes Dryer	£7 9 6	9/6 Dep. 37 Pmts. of 4/-
Hoover Steam Iron	£4 12 0	10/- Dep. 37 Pmts. of 2/6
Jones Portable Electric Sewing Machine	£19 19 0	20/- Dep. 37 Pmts. of 10/6
Singer Portable Electric Sewing Machine	£31 1 3	21/- Dep. 36 Pmts. of 17/6
Transistor Radios	£9 19 6	9/6 Dep. 34 Pmts. of 6/-
Record Players	£11 11 0	20/- Dep. 37 Pmts. of 6/-
Tape Recorders	£22 2 0	22/- Dep. 36 Pmts. of 13/-
Electrolux Fridges	£28 7 6	27/6 Dep. 37 Pmts. of 15/6
Electrolux Cleaners	£21 0 0	20/- Dep. 37 Pmts. of 11/6
Creda Spin Dryers	£25 17 6	20/- Dep. 37 Pmts. of 14/6

Bedroom Carpets	£7 19 6	9/6 Dep. 36 Pmts. of 4/-
Kitchen Sets	£6 0 0	10/- Dep. 36 Pmts. of 3/6
Divans Complete	£13 13 0	20/- Dep. 37 Pmts. of 7/-
Cocktail Cabinets	£18 18 0	20/- Dep. 36 Pmts. of 11/-
Fireside Chairs	£6 6 0	10/- Dep. 36 Pmts. of 3/6
Linen Baskets	£6 6 0	10/- Dep. 36 Pmts. of 3/6
Dressing Tables	£8 8 0	10/- Dep. 34 Pmts. of 5/-
Writing Bureau	£14 0 0	20/- Dep. 35 Pmts. of 8/-
Real Sheepskin Rugs	£5 17 6	10/- Dep. 33 Pmts. of 3/6
China Cabinets	£11 11 0	20/- Dep. 37 Pmts. of 6/-
Bookcases	£7 9 6	9/6 Dep. 37 Pmts. of 4/-
3 x 3½ Wilton Carpets	£18 15 0	20/- Dep. 37 Pmts. of 10/-
Lamtex Rugs—Pure Wool	£7 15 0	10/- Dep. 35 Pmts. of 3/6

Many other bargains including :-

"Fit yourself" Tufted Carpet 19/6 per sq. yard 27 inch Stair Carpet 19/6 yard

Late night closing Friday 8 p.m.

Free delivery

25, 27 and 58 BEVERIDGE WAY, NEWTON AYCLIFFE

Telephone 540

R.A.F. ASSOCIATION NOTES

The Halloween Dance held at the Canopus Club on Wednesday, 31st October, proved itself a complete success. It is the first time that an event of this nature has been attempted, even though there were no 'witches' or 'ghosts' among the crowd. Our thanks are extended to Mrs. Figures who organised the dance, and a very special thank you must be paid to manager Mr. Green and staff of West Farm Products who supplied the eats for the barbeque, free of charge. All profits raised on the barbeque and on the sale of the tickets, will go to the R.A.F.A. Convalescent Home.

Plans for the 1963 R.A.F.A. Annual Conference which is to be held in Ostend, are now well under way, and full joining instructions and other details are being circulated among those members and friends who will be travelling. This trip to the continent is proving very popular among the members, and has created so much interest, that the 'Air Mail' (the R.A.F.A.'s own official newspaper), gave the Newton Aycliffe Branch both publicity, and picture space. Let us hope we can see more articles from northern branches of the Association.

I was told recently of a rather amusing incident which happened on the night of the 'Tramps Ball' during Battle of Britain Week. One of our members, Mr. Ronnie Colvin was making his way over towards his home, late at night, still in his tramps garb, when he was pursued by a Police car who wanted to know who he was, what he was, and what he had in mind. Ronnie told me he was in a great sweat whilst explaining who he was, where he had been, and where he was going. All ended well, and when all had been explained, both Ronnie and the policemen had a good laugh over the affair. Ron told me however, that he did the rest of the walk home at a smart 'double'. (Don't blame you mate).

Notes.

By the time that the December issue comes from the press, it is hoped that the proposed re-decoration to the bar and cloak rooms in the Branch premises will have been completed.

The next bi-monthly General Meeting of the Branch will be held on Tuesday, 4th December, 1962, at 7-30 p.m. prompt.

H.G.S.



WOMEN AND GIRLS—What about a career in a modern Textile Factory

IN THE FACTORY

Light clean machine work. Good pay and working conditions. Excellent canteen. Assisted Travel from outside districts. Apply by personal interview at the Factory Personnel Department Monday to Friday 2.0—4.0 p.m. Saturday 9.0—10.30 a.m.

PATONS & BALDWIN'S LIMITED
DARLINGTON.

IN THE OFFICES

Opportunities for Shorthand Typists, Typists, Machine Operators, Clerks and Laboratory Assistants. Apply by letter to the Women's Staff Supervisor.

JAYS

NORTHGATE · DARLINGTON

The Store with the up-to-date selection of
Modern Furniture, Carpets, Lino, Bedding,
Electric Washers, Refrigerators, Televisions,
Radiograms and Record Players . . .

No Cash Deposit — Your surplus furniture
taken in part exchange . . .

Call or phone for expert valuation without obligation to buy

JAYS · 66 - 68 NORTHGATE · DARLINGTON

Telephone 66767-8

NEWTON AYCLIFFE CRICKET CLUB

This is hardly the time of the year to be thinking about cricket but our policy is to look to the future. The future to us is in the youth of the town and following last year's experiment of having a junior team we are running one again this season. This junior team of today we hope will be the senior team of tomorrow, and in that respect we are giving them every encouragement.

We are still wanting new blood in the club, both junior and senior and our secretary Mr. H. Moses, 35 Gilpin Road is only too willing to welcome new members.

NEWTON AYCLIFFE MOTOR CLUB

The "wind of change," which was so popular with political orators some time ago, seems to have struck the Motor Club. After much behind the scenes work, we now appear to have found a loophole in the wall of "no support" which seems to grow around most Newtonian activities. Full details will be available later so :-

"WATCH THIS SPACE"

The October Treasure Hunt, which was very poorly supported produced the following result:- 1st Dead Heat, J. Snowdon and M. Henderson. 3rd E. Nelson.

A good time was enjoyed by all regardless of numbers, and the same comment could equally well apply to the pictorial quiz organised by Mr. and Mrs. Skerry. We can only hope that next time the turn out will match the effort.

Happy driving and all that, not forgetting the Season's Greetings.
ERIC

THE DOG TRAINING CLUB

The Dog Training Club is held in the Beveridge Hall on Thursday evenings. Junior members at 6-30 p.m. and adult members at 7-30 p.m. but will all members please note there will be no classes on 27th December.

Our quarterly club competition will be held on Thursday, 13th December at 7-30 p.m. Spectators are welcome, admission 1/6d. including refreshments—for further details please contact the Secretary, Mrs. M. Mapp, Telephone Spennymoor 2256.

M.M.

CHRISTISON

8 NEVILLE PARADE
NEWTON AYCLIFFE

Phone 447

Record Players and Transistor Radios
China, Glassware & Pottery Ornaments
Electric Fires, Lamps, Blankets, etc.
Paraffin Heaters and Pink Paraffin
Rugs and Durham Carpets
Wallpaper and Paints, etc.
Television Sales & Service
Ironmongery
Hardware
Cycles
Tools

CHOOSE
NOW
FOR
CHRISTMAS

UNSOLICITED GOODS BY POST

Some of our enquirers have recently been worried by the receipt of unsolicited goods by post which they are invited either to purchase or to return to the sender. Although there is nothing illegal about this method of selling we know that the practice sometimes causes worry and expense to those who can neither afford to buy things they do not really want nor to pay the cost of return postage.

As it is possible that this method of selling may increase during the pre-Christmas season our readers may like to be reminded that the sender of unsolicited goods by post cannot impose an obligation on the recipient, who is under no greater duty than to take care of the goods until the sender arranges for their collection.

This briefly is the general position, but the Citizens Advice Bureau which is open from 2 to 3-30 p.m. and 7-30 to 8-30 p.m. every Friday, will be willing to discuss any particular situation which may arise.

R.M.

THOUGHT FOR THE MONTH

*Time wastes our bodies and our wits;
But we waste Time, so we are quits.*

AYCLIFFE DEVELOPMENT CORPORATION

— OFFER —

FOR HIRE — Hoover Washers (Mark I & Mark II)

FOR SALE — Gas Washboilers (second-hand)

For particulars apply to the Housing Office.

THE MAYERS THEATRE GROUP

The Mayers Theatre Group meets every Tuesday evening at 7-30 p.m. in the Milton Hall School, Burn Lane, and is continuing with its series of talks and demonstrations on all aspects of the theatre.

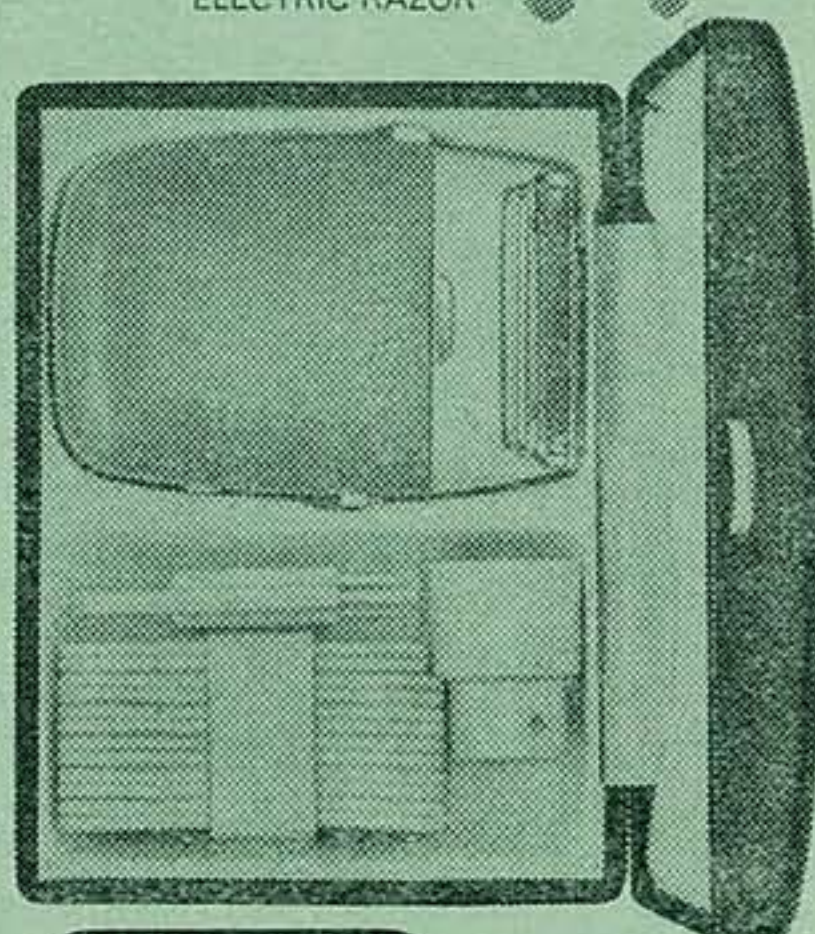
An excellent evening was had recently when Miss Hamilton talked to the Group on her visit to see the passion play at Oberammergau. Her observations on both the religious and production aspects of this unique play together with a fine selection of photographs, left us all feeling that drama, as a practical expression of community spirit and feeling, will still have a part to play when Bingo and Television have found their level.

After this edition has gone to press the Group will be visiting the Georgian Theatre at Richmond which has now been restored to its original condition and is now a theatre museum. It is open to the public on Saturdays and Sundays and is well worth a visit from people in the town who are interested. This theatre is the only one of its period left in England.

Selection of a play for the latter part of the next half of the season is well advanced. This play is intended to be a culmination of our efforts of the year and our contribution to 'live' entertainment for Newton Aycliffe.

Which Christmas gift will a man be grateful for every day of the year?

the new Ronson
ELECTRIC RAZOR



RONSON

Standard £6.19.6. De luxe £7.19.6. **See it, buy it at:**

Always in stock at . . .

WENTONS

25-27 BEVERIDGE WAY .. NEWTON AYCLIFFE

EASY TERMS AVAILABLE

BEVERIDGE ROLLER DANCE AND FIGURE SKATING CLUB, NEWTON AYCLIFFE

As these notes go to press members and friends are hard at work preparing for the Fancy Dress Parade which will be held on Nov. 10th more about this next time. Many thanks to the local shop owners who have been kind enough to help us by displaying posters, also to members for their help in distributing leaflets to advertise the Parade. The Committee members were very disappointed when only four members had enough interest to take part in our written quiz competition. This was devised by Noel Bennett, and the winners were :- June Walker 1st; Pauline Nelson 2nd; Christine Megginson 3rd; and Carole Carnan 4th. June and Pauline were awarded first and second prizes respectively. Hope the writing cases prove to be useful for future competitions. Christine and Carole received consolation prizes of fountain pens and note paper for their efforts and interest—well done girls!

It is pleasant to see many new faces on class sessions and we would like to welcome new members Margaret Fearn, Susan Metcalfe, Pauline Burton, Joy Palmer, Margaret Bellis, Pamela Brown and Julie Higgins. At this stage our classes are full to the brim, but you are still most welcome to add your name to our waiting list. In the meantime our Saturday general skating sessions can still be described as A NIGHT OUT FOR THE WHOLE FAMILY.

Our committee members are very kindly taking it in turn to provide raffle prizes each Saturday night—thank you so much it is a great help to the club.

As from December the first, members and friends will be able to take advantage of our inter-club Christmas post box. This is intended to save you the cost of postage, and to help the G.P.O.

On Saturday, December 22nd we will be holding a special Christmas Carnival night, when we hope to have a visit from dear old Father Christmas who will act as postman and give out the cards from the post box. May I on behalf of the Committee wish all our members and friends a very Merry Christmas—Do please take great care on the roads. Hope to see you at our Christmas Carnival. Please note :- All correspondence should now be addressed to 24 Kenny Walk, Newton Aycliffe.

G.A.B.

FAMILY PLANNING ASSOCIATION

Clinics are held in the Beveridge Hall EVERY Tuesday from 2 p.m.—3-15 p.m. There is a lady doctor in attendance.

The Clinic will be CLOSED Christmas week and New Year's week.

Information and appointments from Mrs. Thomas, 84 Cockton Hill Road, Bishop Auckland. Tel. Bishop Auckland 2162.

COLLINSON & POCKLINGTON Ltd.

T.V. Rental or Terms, Aerials supplied and erected, Records, Sports Goods, Camping, Cycles, etc. Hoover Agents

BUY WHERE YOU GET QUICK LOCAL SERVICE

NOW OPEN UNTIL 8 P.M. FRIDAYS

76 BEVERIDGE WAY • • NEWTON AYCLIFFE

Tel. Newton Aycliffe 554 Service Dept. Aycliffe 2221

NEWTON RANGERS F.C.

The Newton Aycliffe Sports Stadium

As we have mentioned in previous editions of the Newtonian, we reckon that we are the only Football Team in the town that can be called the Town Team. On that presumption we anticipated being well in the running for the pitch on the New Stadium. Alas, this is not to be. The Council are putting down an "All weather" pitch. This being so, we or anyone else who gets the pitch, will not be able to play **League Football** on it.

What then is the purpose of the pitch? The School children have their own school pitches and the Youth of the town, to whom I'm given to understand are the prime aim of the Stadium, are either connected with the various teams in the town or have no interest in the game.

The great need of the town is for more grass pitches for both Football and Cricket and we are sure that the Council could do much better with their money and ours than spend it on a White Elephant.

G.F.W.

NEWTON AYCLIFFE AND DISTRICT DOG TRAINING CLUB AND CANINE SOCIETY

Classes are held every Monday evening in the Clarence Hall at 7-30 p.m. The Society would like all people who are interested in showing their dogs at our shows to come and make use of this service to help them win prizes.

The next show will be held on Saturday, December 22nd in the Beveridge Hall commencing at 2-30 p.m. prompt. The judge will be :- Mrs. Jean Hopwood (Cheshire). The prize money will be 1st 10/-; 2nd 5/-; 3rd 2/6, reserve specials.

The entries close 14th December and your entries must bear a postmark not later than this date. Miss E. M. B. Hamilton has kindly consented to present our Cups and Trophies.

The Children's Handling Class entries will be taken before the commencement of the Show.

Schedules can be obtained from Mrs. M. Rickaby (Secretary) 12 Castlereagh Close. Telephone Newton Aycliffe 672.

METHODIST NEWS

Remember the Youth Festival—December 15th.

There will be a display of Arts and Handicrafts in the Methodist Hall at 2 p.m. admission will be 1/-, O.A.P.s. and children 6d. each. (admission free at 7 p.m.) Refreshments will be on sale. Each organisation will exhibit and the proceeds are to be donated to the building fund.

B.P.

MEYNELL Funeral Services

40, 150, 248 NORTH ROAD, DARLINGTON

Tel. 2542 Day and Night

Established 60 years

Paraffin Deliveries!

For your convenience a weekly Pink Paraffin Delivery Service to all parts is now in operation. Any quantity from one gallon upwards delivered direct to your door.

For a call, please ask at the shop or ring Newton Aycliffe 436.

HARDINGS,
66 BEVERIDGE WAY,

"RIGHTWAY"

School of Motoring

Qualified Instructor
Beginners and
Refresher Courses
New Austin "Mini"
Dual Controls
Moderate terms

MR. L. A. DUNN,
29 CLARENCE CHARE,
NEWTON AYCLIFFE

Tel. Newton Aycliffe 439

WENTON

Home Furnishers

(PRIVATE COMPANY)

Sole Directors: G. Machin, H. Hope, S. Moss

WE STOCK AN EXTENSIVE RANGE OF
NURSERY FURNITURE,
CURTAINING, BEDDING, DIVANS

Stockists of "RESTMOR" & "SWAN" PRAMS,
PUSH CHAIRS, ETC.

PRAMS from £15 19 6

DIVANS from £13 13 0

CANDLEWICKS from 37/6 each

LINENS Boxed Goods, Table Cloths,
Tea Towels, Pillow Cases,

Catalogues available for
Somnus, Myers, Slumberland, Silentnight Divans

EASY TERMS

Provident Cheques accepted

LATE NIGHT CLOSING FRIDAY 8 P.M.

58 Beveridge Way, Newton Aycliffe

Telephone: 540

YOUR LETTERS

Welfare Clinic

Sir,

Why is it that a new town like ours does not have an efficient Welfare Clinic? By this statement I do not intend any criticism regarding the care and advice given to mothers for their children but the fact that baby food is often out of stock. On four separate occasions a particular brand has been out of stock and to obtain it from a chemist means an extra cost of 1/7d. per tin.

Surely, as there are so many new babies in the town, adequate stocks of such food should always be held.

SHAFTO WAY.

G.G.

Sir,

It is my pleasure to act for the Pensioners Association Concert Party, and recently they gave a short concert in the Beveridge Hall.

I would like to make a strong protest regarding the condition of both the pianos in the Hall. They are dirty, neglected, and in need of both tuning and repair. I do not know whose responsibility it is to see that these instruments are kept in good order, but I suggest it is time that they were given some attention. Being but a moderate pianist, I wonder what a really accomplished performer would think of these monstrosities, that they are a disgrace to the town is the opinion of

AVIS PATTISON

BURY ROAD.

Eds. comment.

Here is an opportunity for someone who has an unwanted piano (in good condition) to put it to good use. Write to the Editor.

Sir,

I was interested to note in the October edition of 'The Newtonian' that no less than three organisations contributing are wholly or partly interested in Drama. To my knowledge at least two other organisations exist having similar interests.

It has long been my contention that a satisfactory theatre is required in Newton Aycliffe for these people and for the potential audiences and users which must exist in the town.

Immediately I can hear people saying "Why build a theatre here when they are closing all over the country?" but the word theatre originally meant a "seeing place" so why can't we have a seeing place where we can see our Operatic Society, our Dramatic Societies, our Town Band, our Dancing Teams. The theatre or auditorium I envisage is a place where musical concerts, business conventions, plays, operas, lectures, political meetings, and films can all be 'seen' and heard in reasonable comfort and under reasonable conditions.

We should not expect the Development Corporation to give us this as an additional social service and unless a large sum of money could be raised this would appear to be an impossible suggestion but I would like to suggest to organisations in the town that an alternative would be to go into the 'open air'. A very fine site is already in existence in the Burn Lane Park which with some modification and support from the Parish Council could be a fine natural setting for plays, operas, dancing displays, open air church services, open air dancing and rallies.

Immediately the Jonahs say "What about the weather?" My answer to this is Scarborough Open Air Theatre and the dry spell nearly always found in September and early October. The site I refer to has a natural slope and natural balconies, all that is required is a flat topped grass mound some three feet high and Newton Aycliffe has a theatre with good acoustics and the finest ventilation system you could hope for.

Next summer is too late to think about this because it could not then be used until 1964. I am certain if most contributors to your periodical thought about it most could find a use for such a 'theatre' for their summer programme.

Yours faithfully,

J. Land, 104 MELLANBY CRESCENT.

Eds. Comment:- A concept of imagination and forethought deserving serious consideration.

NURSERY RHYMES

Hush-a-bye, baby, your milk's in the tin,
Mummy has got you a nice sitter-in;
Hush-a-bye, baby, now don't get a twinge,
While Mummy and Daddy are out on the bing.

Mary had a little bear,
To which she was so kind,
That everywhere dear Mary went,
You saw her bear running along behind her.

CAN WE HELP YOU?

Have you any Worries or Problems?

For the 101 Questions you want answered
ask your local

CITIZENS ADVICE BUREAU

Community Centre, Finchale Road.

Open Every Friday 2-0—3-30 p.m. and 7-30—8-30 p.m.

EXPRESS TYRE SERVICES

For all your Tyre needs.
Good stocks of all sizes.
Town & Country—Remoulds
all sizes in stock.

All Fitted Free.

Satisfaction Guaranteed

ANTI-FREEZE 3/6 per Pint

See us first and you will not
regret it. Full range of
accessories in stock.

Provident and Hartlepool
Cheques accepted, for all
goods supplied.

37/38 MARKET PLACE
BISHOP AUCKLAND

Tel. Bishop Auckland 538



"For
Everything
Musical"
8-10
TUBWELL
ROW,
Darlington
Tel. 66224

ROBINSON AND HUGILL

Property Repairers

For all types of building materials,
glazing, all classes of joinery work
and electrical installations

GREENWELL ROAD
NEWTON AYCLIFFE

Tel. 383

Tel. 2696 & 3081

Wm. Harker & Sons

FUNERAL FURNISHERS

King Street, Darlington

Cremations arranged—any distance

Awarded 11 Diplomas of Merit

MOTOR INSURANCE

Immediate cover at the lowest
rates. Up to 50% No Claim
Bonus allowed on transfer.

E. W. KNAPTON, 8 Ken-
sington South, Cockton Hill
Road, Bishop Auckland. Tel:
1177. Newton Aycliffe 759.

Open till 7 p.m. Free quotations

INSURE WITH THE PENNINE Insurance Company LIMITED

First Class Claims Service
40% Plus No Claims Bonus
All classes of Insurance dealt
with—Fire, Burglary, etc.

Satisfaction Guaranteed

Office open daily 9-30 a.m.—5 p.m.

37 MARKET PLACE,
BISHOP AUCKLAND Tel. 538

WOMANS COLUMN

December is with us again; how quickly time passes as we grow older whereas to children last Christmas will seem an age away, to us more advanced in years it seems but yesterday. However, one thing is certain Christmas is almost with us, and for the housewife there is much to do in preparation for the festival. I always think that this is a time where one's imagination can run riot, as there are all age groups to cater for, and in these times each age has its own fashion in food, the common factor being that savouries are most popular.

In most kitchens the biscuit tin is the one usually raided by both old and young and frequently needs re-stocking: here then are two recipes, one savoury and one sweet.

Cheese biscuits—4-ozs. plain flour, 4-ozs. good quality margarine, 6-ozs. cheese, 2 egg yolks, 1 teaspoon dry mustard, pinch pepper and a good pinch of salt, and a little cold water.

Method—grate the cheese fairly fine, rub the margarine into the flour add the mustard, pepper and salt, then the cheese, bind together with the egg yolks and a little cold water, if necessary, to a stiff dough. Roll out thinly on a floured board, cut into rounds, place on baking sheet and bake in a hot oven till lightly browned.

The same mixture can be rolled and cut into strips and when cooked served as cheese straws.

Piped biscuits—These are very easily made and look most attractive, you need the following ingredients: 6-ozs. butter or good quality margarine, 8-ozs. plain flour, 3-ozs. caster sugar, few drops vanilla essence, 1 dessertspoonful milk.

Method—Cream fat and sugar till light and soft, gently fold in the flour, vanilla, and milk. Put into a forcing bag and pipe rosettes on to a greased baking sheet 1½ inches apart, cook 6 to 7 minutes at 425°F.

For teenagers parties I suggest the following for "eats" Have bowls of potato crisps accompanied by bowls of different "dips" such as sardine and mayonnaise made by mashing sardines in tomato sauce with a little double cream or mayonnaise to a consistency which is easy to scoop with a crisp. Cheese and anchovy is a tasty "dip" as is egg and salmon mayonnaise, using the yolks of hard boiled eggs and the salmon mayonnaise which can be bought in tubes ready prepared. Try asking the teenagers to invent their own "dips."

For a Christmas decoration that is out of the ordinary try this: One large potato, a skewer, and a length of string and some evergreen. Make two holes right through the sides of the potato about an inch apart with skewer, thread the string through and knot the ends, hang on a nail or coat-hanger between an open door, its much easier to work this way. Then prepare the evergreen by cutting into lengths of between twelve and three inches, if using holly, sharpen the ends of the stem and stick in all over until the potato is completely hidden, trim into an even ball and hang in a permanent place. The beauty of this type of decoration is that it keeps tidy and fresh for a long time.

You can use the same idea as a stand by using three wooden skewers for legs and then place the evergreen in position.

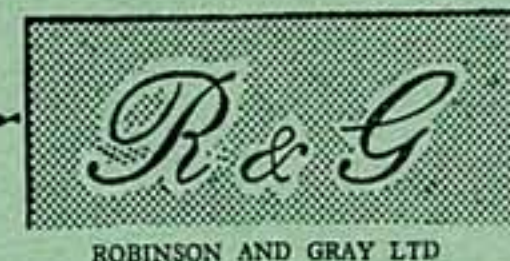
There are quite a few evergreens suitable for this purpose, holly with lots of berries, is very attractive—golden privet is colourful—and mistletoe may be introduced if the ball hangs in the middle of the room.

A large rosy cooking apple can be used as an alternative to a potato, in which case leave gaps so that the shiny red skin glows through the greenery.

With the Season's Compliments.

M.M.G.

THE FASHION
CENTRE,
6 BEVERIDGE
WAY



ROBINSON AND GRAY LTD

Phone:
Newton Aycliffe
434

Evening Wear, Coats, Skirts, Blouses, Millinery, Babywear
Separates, Slacks, etc.

CHRISTMAS GIFTS TO WEAR

Knitwear, Scarves, Gloves, Handbags & Purses, Nylons,
Handkerchiefs, Lingerie, Slumberwear

At all prices to suit everyone

—Select in comfort at your leisure—

Look round without obligation

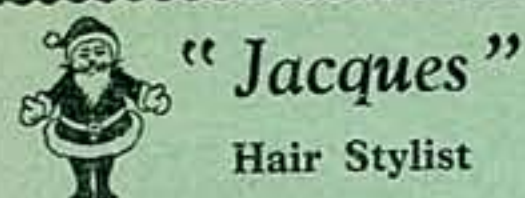
Personal Attention

HAWARD & ROBERTSON LTD.

REMOVALS AND STORAGE

15-21 GARDEN STREET, DARLINGTON

Telephone: 2367

**"Jacques"**

Hair Stylist

Tel. Newton Aycliffe 520

THE COMPLIMENTS
OF THE SEASON
TO ALL OUR CLIENTS

from

MRS. CAREY & STAFF

Salon:
8 Beveridge Way,
Town Centre**Aycliffe Laundry Ltd.**

and

Spruce, the Cleaners

EXCLUSIVE

"SPRUCETEX"

Re-texturing

at NO extra cost

Telephone Aycliffe 2212

TOWNSWOMEN'S GUILD

1962 has been a good year for the Guild, both from the social and educational aspect, and that which is most important in any organisation, our financial state.

We have had excellent speakers covering a wide range of subjects—had some very enjoyable trips out and about including the M.M.B. at Langley Moor—the County Police H.Q. at Aycliffe and to the Theatre Royal in Newcastle. Although the annual subscription has now been increased to 7/6 this is not really costly if worked out as follows; we have twelve meetings per year, eleven business and social, and one purely social. These meetings are always held on the first Monday in the month, in addition to the monthly get together we have various activities when members meet either weekly or fortnightly. The Drama Group for instance meets one evening every week and are always either play reading or rehearsing, anyone can join even if they don't actually wish to learn a part—prompts are always necessary.

The Arts and Crafts section should appeal to most ladies with an interest in "home affairs." The present members have recently launched out on a new idea—cooking demonstrations in each others kitchens, these are proving very popular as something new is discovered each time.

Social Studies meet every other week—the usual pattern is to choose a subject agreeable to all members and study it thoroughly each member taking an active part in the research.

Swimming—for several years an informal swimming club has been active, using the Baths in Darlington.

So you can join the Townswomens Guild knowing that you will find something to interest you, and make new friends.

M.M.G.

NEWTON AYCLIFFE TENANT'S ASSOCIATION

From time to time the Association receives complaints from tenants in various parts of the town about damage caused by young children to flowers and plants in the flower beds in front of houses and bungalows. These are in many cases unfenced, and we would like to appeal to parents to help by teaching their children to appreciate and not to destroy, what may represent a great deal of time and patience. Another hardy annual which comes up time and time again is the disturbance caused by older children, who use garage roofs for feats of strength and daring, please help to stop this kind of thing in any way you can. It would be a pity if all the garage tops in the town had to be covered with barbed wire in order to give the tenants living near them some peace and quiet.

G.W.K.

ADVENTURES OF DOGGIE RUM

About midnight, the wild Grey Goose came down from the sky. "I flew them to the mountain," he cried

Later, the Wild Duck returned, "I flew them as high as another mountain" he said.

Towards morning, the Rook came back, "I flew them through the clouds, by the light of the Moon," he said.

Then the Nightingale came back, "We flew over the highest clouds, until the Lark and I could see over all England," he said.

The animals were just going to have breakfast, when Blackie called from a treetop, "Here comes the Lark."

The Lark sank softly to the ground "I flew higher and higher" he said "The Moon shone in the west." In the East, the sky got brighter and brighter, the stars faded, and then the glorious Sun peeped over the edge of the earth, painting the clouds, with all the colours of the Rainbow."

"I was enchanted, and sang and sang. Then to my astonishment I saw a little star quite close to me, so I flew and perched on it."

"Hello! Where are you going," said the little Star? "I'm trying to fly to the moon, but its too far, and now I must return to Earth." "Well! shall I tell you how to get to the Moon" asked the little Star? "Oh! please do" said the Lark, "Very well, now listen! When you get back to Earth, you must make a three-corned mat with bul-rushes, and bring it up here with you" said the little Star, I will show you how to tie the mat between three Moonbeams, then you can sit on the mat, and slide to the Moon." "Oh, thank you, my name is Skylark—What is your name little Star?"

"My name is Twinkle, and I am a captive of the Moon. When you reach the Moon, please ask the Silver King to let me go." "I certainly will," said Skylark, "now I must go back to my friends on Earth and get them to make a mat, will you meet me here, Twinkle, at next month's full Moon?" "Yes, I shall be round here again next month. Goodbye Skylark." "Goodbye Twinkle."

"Hurrah! Hurrah!" shouted the animals and Rummy called "Three cheers for the Explorers."

"Now, who will volunteer for the next adventure to the Moon?" "I will" said the Wild Goose. "I will" said the Wild Duck "I'm sorry I can't go," said the Rook, "but our first nest was destroyed by the high winds, and our second lot of baby rooks can't fly yet, and I must stay at home and help feed them, until they can fly and find food for themselves."

"That's alright Rookie, said Rummy, we all understand "Women and children first" "Could I take Rookie's place" asked the Carrier Pigeon? I might even carry Nightingale and Lark right up to the little Star 'Twinkle' and then sit on the mat, and slide on the Moonbeams to the Moon." The Nightingale and the Skylark both said they would go again.

"Excuse me," said Gloria, but I have to go now, to the Milking Parlour, and we must take Harry and Millicent back."

"Thank you for an exciting adventure," said Harry, "Me too," said Millicent, "I have enjoyed myself at the Camp fire, I gave Quillie a pen-nib, he is going to put it in a quill, and learn to write, and Quillie gave me some of his favourite herb seeds to eat."

Harry laughed and said, "Do be careful what seeds you eat, Millicent."

"There was a young girl of Leeds,
Who swallowed a packet of seeds,
For a month, in her class,
She was covered with grass,
And she couldn't sit down for the weeds."

Everybody laughed, and the animals said, "Come back to the next Camp fire and Moon Shot." "We will" "We will" Goodbye now and Good luck till we meet again.

COMMUNITY CALENDAR FOR DECEMBER

Beveridge Hall

- Sunday:** Town Band 10-30 a.m.
Assembly of God Sunday School 2-30 to 4 p.m.
Skating 4-7 p.m.
- Monday:** Library 2 p.m.—4 p.m. and 5 p.m.—7 p.m.
Townswomen's Guild 7-15 p.m. 3rd December
Labour Party (Women's Section) 7-30 p.m.
17th December. Welcoming Party 7-15 p.m. on
10th December.
- Tuesday:** Welfare Clinic 9-30 a.m.—11-30 a.m. on
11th December.
Family Planning Clinic 2 p.m.—3-30 p.m.
Skating Club 7 p.m.—10 p.m.
- Wednesday:** Library 2-4-30 p.m. and 5-7 p.m.
Dance 7-30 p.m.—10-30 p.m.
- Thursday:** 9-30-4 p.m. Welfare Clinic
Dog Training Class 6-30 p.m.—10 p.m.
- Friday:** Library 2-4-30 p.m. and 5-7 p.m.
7-30 p.m. Table Tennis Session
- Saturday:** 7 p.m. Skating Club
Canine Club 2 p.m. and 6-45 p.m. on 22nd Dec.

Clarence Hall

- Sunday:** Jehovah's Witnesses 3 p.m.—4 p.m.
Salvation Army 6 p.m.—7 p.m.
- Monday:** W.V.S. Children's Nursery 1-30-3-45 p.m.
Canine Club 7-15-10 p.m.
- Tuesday:** Whist Drive 7-30 p.m. Open to all
- Wednesday:** W. V. S. Meeting 2 p.m.—4 p.m.
Territorial Cadets—Evening
- Thursday:** Jehovah's Witnesses 7 p.m.—9-30 p.m.
- Friday:** Assembly of God Youth Club 7 p.m.
- Saturday:**

Committee Room

- Sunday:** Loco Spotters 7 p.m. to 10 p.m.
Sketch Club 2 p.m.—4 p.m.
- Monday:**
- Tuesday:** Welfare Clinic 9-30 a.m.—1 p.m. 13th and 21st
November
F.P.A. Clinic 2-3-30 p.m.
Toc H 7-30 p.m.—9 p.m.
- Wednesday:** Dance Club 7-30 p.m.—10-30 p.m.
- Thursday:** 9-30 a.m.—4 p.m. Welfare Clinic
Probation Officer 4 p.m. to 6 p.m.
Canine Club 7-30 p.m. 6th December
Labour Party 7-30 p.m. 13th December
- Friday:** Chess Club 7-30 p.m.—10 p.m.
- Saturday:** Skating Club 7 p.m.

Warden's Office and C.A.B. Room

- Sunday:**
- Monday:** 2 p.m.—3 p.m. Registrar (Warden's Office)
- Tuesday:**
- Wednesday:**
- Thursday:** 2 p.m.—3 p.m. Registrar (Warden's Office)
- Friday:** 2-3-30 p.m. C.A.B. Session and 7-30 p.m.—
8-30 p.m. C.A.B. Session
- Saturday:**

Upstairs Room

- Sunday:** Salvation Army 10 a.m.—11 a.m. & 2 p.m.—4 p.m.
- Monday:** Whist 7-30 p.m.—All welcome
- Tuesday:** St. John Cadets (Girls) 6-30 p.m.
- Wednesday:** Town Band 6-30 p.m.
- Thursday:** Salvation Army 6 p.m.—8 p.m. Drama Club
8 p.m.—10 p.m.
- Friday:** 6-30 p.m. St. John Cadets (Boys)
- Saturday:** Town Band (Juniors) 10 a.m.

TRADE NOTICES

Rate 2/- per line.

G. Ellis, Watch and Clock
Repairer. Repairs now collected
at:- Hardings, 66 Beveridge Way

CHIMVAC—Electric Sweep
Write or call 31 Carileph Close
(off Stephenson Way). Tel. 498.

LEARN TO DRIVE with a
qualified instructor at Hobson's
Motoring School, R.A.C. Reg.
Pick up at Aycliffe. 90% pass at
first attempt, 9% at second test.
Enquiries to South Road Service
Station, High Etherley, Bishop
Auckland, Tel. W. Auckland 500

STARTRITE DRIVING
SCHOOL offers unbeatable ex-
perience at your service. The
instructor's qualifications are :-
R.A.C. registered & qualified;
Ex-Police advanced instructor
Ex-Ministry examiner;
Regional examiner for Com-
pany of advanced motorists.
Terms reasonable. **YOU MAY**
PAY AS YOU LEARN IF
YOU WISH !!!
18 Neville Parade, Tel. 448.

LOOKING AHEAD? Four
Berth Caravanette for Self-Hire.
Bookings now open for 1963
Holidays. £5 deposit secures
your booking. Pay balance either
weekly or monthly. An easy way
to get your holidays. Apply 11
Isherwood Close, Tel. 414.

WE deal with all main Furniture
and Carpet Manufacturers. Ask
for Catalogues. Wenton Home
Furnishers.

IF you have an account with us
and find yourself in difficulty
we can help you immediately.
Wenton Home Furnishers.

HUNDREDS of suggested
Christmas Gifts—easy terms.
Wenton Home Furnishers.

THERE are still plenty of used
Furniture and Electrical items
at our second-hand shop. Ask
for Wilf at Wenton Home
Furnishers, Greenwell Road,
(Behind Woolworths).

EXCELLENT part-exchange
terms for your old furniture,
T.V., etc., Wenton Home
Furnishers.

LOST in or near the Town
Centre. Key Wallet. Finder
please return to 18 Kenny Walk.

HARDINGS 66 Beveridge Way
(near Clock Tower) Tel. 436.

HARDINGS Join our large
Christmas Club. All goods
reserved on payment of deposit.

HARDINGS for Christmas
Toys and Gifts.

HARDINGS Triang Toys,
Mobo Toys and all leading
makes.

HARDINGS Large range of
Watches and Clocks, including
Timex, Smiths and Westclox.

HARDINGS New Range of
Jewellery every fortnight.

HARDINGS Ornaments and
Fancy Goods.

HARDINGS All Club Tickets
taken.

HARDINGS Goods delivered
on request.

HARDINGS Weekly Pink
Paraffin delivery service to all
parts of the town.

HARDINGS Pre-packed Coal
at 3/- per bag.

For your Radio, T.V. and
Tape Recorder Repairs Phone
Aycliffe 2221.

COAL all winter special prices.
Large best coal 8/3 per cwt.
Special House Nuts 7/3 per cwt.
Good supplies and delivery.
Clean and Red Hot Coal
Ring West Auckland 278 or
Write Maires Coal Depot,
Evenwood.

BUY as
you RENT!
Television

WHITE BROS.

Rental Purchase Scheme

LETS YOU DO
JUST THAT!

Have the best of
both worlds from

WHITE BROS.

43 DALTON WAY,
NEWTON AYCLIFFE
or 20 SKINNERGATE,
DARLINGTON

NEWTON AYCLIFFE GARDENS GUILD

Will members please note that Mr. J. H. Blewitt, has resigned as Secretary of the Guild, but, we are pleased to say, he is still a committee member and his knowledge is still available. He was reluctant to relinquish his secretaryship but his private avocations forced it upon him. Thanks Joe for the great job you have done whilst "in the saddle."

The new secretary is Mr. K. Stewart, 12 Pease Way.

The Extra Mural Studies Department of Durham University have offered to hold a series of lectures under the heading of 'Botany,' commencing next September. The lectures will be given by Professor G. H. Banbury and will have a slant towards Gardening. Anyone who has attended lectures given by Professor Banbury will agree with me that if we can get this course we are in for a treat. Let me make the point that anyone can attend; the course will be held in one of the schools in the town, and will not be restricted to Guild Members. The institution and continuance of the course will be in accordance with Durham County Education Authority conditions regarding the minimum number of persons attending. Member or not, if you are interested let me have your name and address without delay, and if you are not a member why not become one.

The Guild Hut will continue to be open from 11 a.m. to 12-30 p.m. each Sunday.

It should be noted that all future meetings will commence at 8 p.m. and attention is drawn to the additional meeting on Tuesday, December. 3rd.

K.S.

THE JOINT SHOW

The Committee of the Joint Show very much regret that, owing to the lack of entries, it was necessary to cancel the Chrysanthemum Vegetable and Handicraft Show arranged for Saturday, 10th November, 1962. People who purchased tickets should return same to the vendor when money will be refunded.

The Committee would like to remind residents that, whether members of the respective Societies or not, they are legible to submit entries in the Flower, Vegetable and Handicraft Sections at these Joint Shows. Only the Chrysanthemum and Dahlia Sections are restricted to the members of that Society.

G.W.

ROCK CLIMBING

Any active, inactive or "would be" rock climbers who would be interested in forming a club are invited to contact :- Mr. R. Tibbett, 27 Kemble Green, any evening, excepting Mondays, after 6 p.m.

WOMEN'S VOLUNTARY SERVICE

The Newton Aycliffe Centre of the W.V.S. is very eager to attract more members. It's present concern is the care of families in the event of war, and talks are to be given on this subject. Our members are continuing the fine record of the W.V.S., which was established 22 years ago, by helping people in distress.

Meetings are held in the Clarence Hall each Wednesday at 2 p.m.

A.B.J.

OXFORD COMMITTEE FOR FAMINE RELIEF

The Townspeople will be pleased to know that for the special appeal week in October they raised the sum of £93 and a cheque for this amount has been sent to the Central Fund in Oxford. The Organisers wish to express their sincere thanks for your splendid response.

**NEWTON AYCLIFFE BRANCH
PHYSICALLY HANDICAPPED ASSOCIATION**

During the past two months, varied entertainments have been provided for members at their fortnightly club meetings in the small hall of St. Clare's Church. They have included handicraft demonstrations, talks and films on Road Safety, Newspapers, the River Tees and musical entertainment. A full programme of events until the end of March has now been drawn up and all members should have a programme.

At the time of writing, a Christmas Party is being planned for December 14th with members of the committee providing the entertainment.

Unfortunately transport for those who can't get to the meetings under their own steam, continues to be a problem and the committee would be very grateful for assistance in this matter. If a car owner has a few minutes to spare on occasional Friday nights and feels he or she would like to help, please either contact me, Telephone Newton Aycliffe 514 or Councillor Hewson, Newton Aycliffe 406.

Another donation has been received from Judith Aspinall and her friends. By collecting old woollens and selling them to a dealer they raised 10/-. This makes a total of 21/6d. they have donated to the Physically handicapped club. The committee knew nothing of what was going on and are greatly touched to think that these youngsters should think of others in this way. They express their grateful thanks to Judith and her friends and I apologise for having been so lax in not mentioning it last month.

For the new year a pantomime trip is being planned for the members, probably towards the end of January. An Easter Fair is to be held at the end of March or beginning of April and it is hoped a person of note will perform the official opening.

The committee and club members, extend their thanks to all voluntary helpers who have given unstintingly of their time during the past year whether it be as entertainers, lecturers, refreshment providers, transport drivers or "sweeper uppers" and wish them a Very Happy Christmas.

M.S.



WENTON Home Furnishers

wish all residents

A Happy Christmas

and

The Best of Luck for

The New Year



25, 27 & 58 BEVERIDGE WAY
NEWTON AYCLIFFE