



THE NEWTONIAN

Reader coverage 12,000

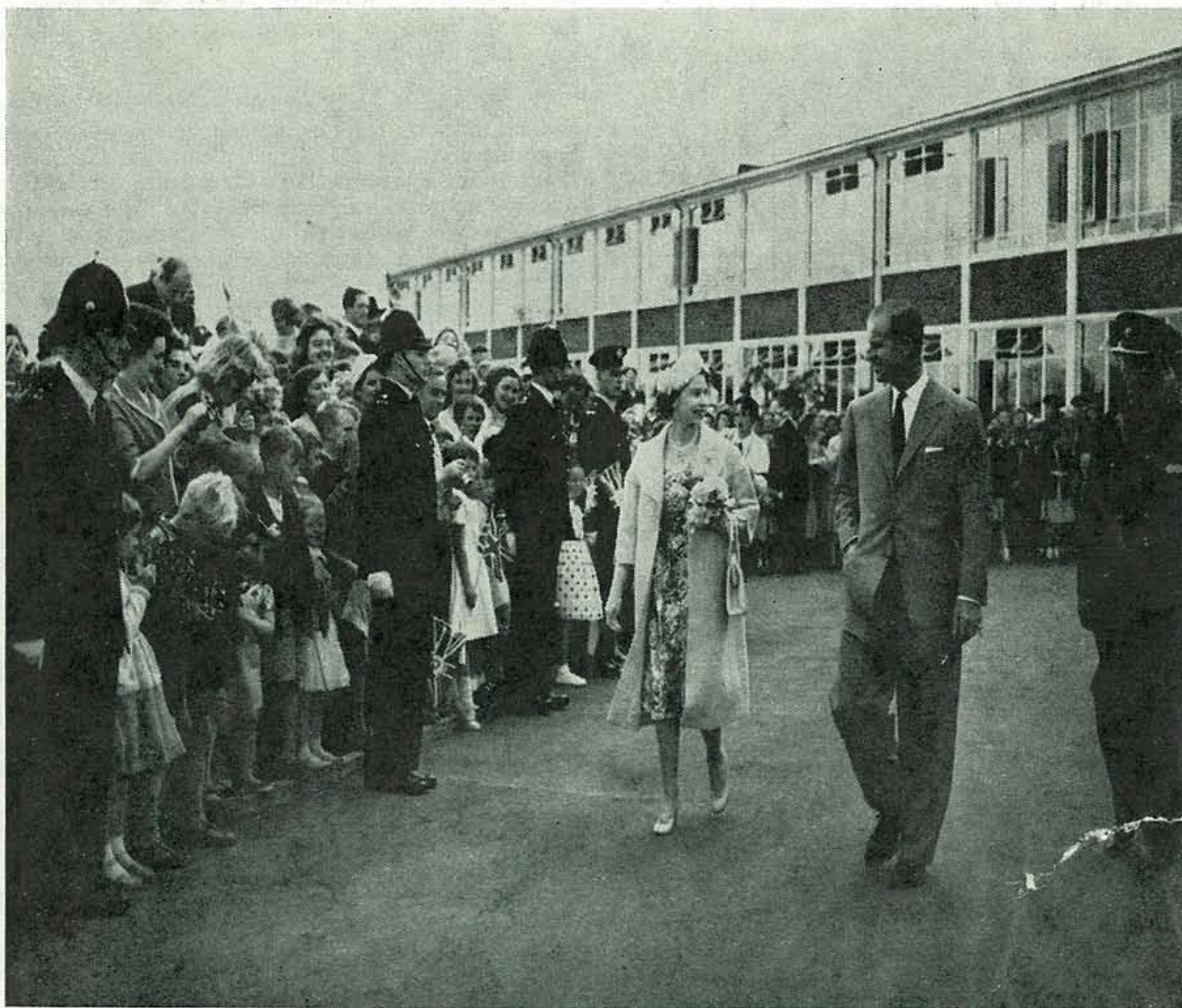
Free delivered circulation

Volume 3, No. 36

Editor: E. F. BROOMFIELD

JUNE, 1961

THIS TIME LAST YEAR



We are indebted to the Northern Echo for this record of the most memorable event in the life of our new town.

THIS HAPPY BREED

Newton Aycliffe is very fortunate in having a great many people of good will. Good will towards each other, and good will towards the town.

A large number attended at the Beveridge Hall on April 27th to consider the two resolutions published in the April Newtonian. Both were passed.

The general opinion was that the Community Association had fulfilled the purpose for which it came into being.

What was this purpose?

It was to bring happiness to the individuals, and to bring it more abundantly.

You may remember Abraham Lincoln's words, in the declaration of Independence "For Life, Liberty, and the Pursuit of Happiness." Not a word about money, mark you. Could it be that the pursuit of happiness, and the pursuit of money, are two different things.

Have you heard the story of the Millionaire and the Tramp? Once upon a time, a tramp was walking down a country lane. It was a lovely spring morning, and the tramp whistled and sang snatches of song as he watched the birds and flowers of the hedge row. The blue sky above, with tiny white clouds, was like a basket of flowers, and the sun shone warmly on all nature.

The millionaire's mind was filled with worries. The stock market was falling, and his money was going.

That very morning he had lost his collar stud, and all his self-control. His wife had threatened to leave him because he could not give her happiness, only money.

Suddenly the millionaire noticed the tramp, and stared at him in amazement.

"Why is that tramp so happy, when I am miserable with all my money?"

The millionaire concentrated his attention on the tramp. He had made his millions by concentrating on one thing at a time, **Happiness**, he thought, must be a state of mind. Suddenly a little bell rang in the millionaire's head.

"I know!" "I know,"! he shouted, "The only real Superiority in life, is the superiority of happiness."

And there and then, he gave the tramp a noble gift, and decided to leave all his money to a Community Association.

* * * *

Many people would like to thank Mrs. Sheridan, for the good will and help that she has given to the users of the various halls and rooms at Finchale Road.

WHITE BROS.

TAKE OVER

The Motor-Cycle and
Bicycle Shop at
43 DALTON WAY
(THE TOWN CENTRE)
NEWTON AYCLIFFE.

Tel. 535

Motor-Cycle Agencies
now include:

B.S.A.
LAMBRETTA
VESPA
N.S.U.
JAMES
MATCHLESS
ENFIELD

WHITE BROS.

(DARLINGTON) LIMITED

REGISTERED OFFICE:

201/9 NORTHGATE
DARLINGTON

Aycliffe Laundry Ltd.

and

Spruce, the Cleaners

EXCLUSIVE

"SPRUCETEX"

Re-texturing

at NO extra cost

Telephone Aycliffe 2212

WENTON'S

TELEVISION
REPAIR SERVICE

Prompt attention guaranteed

T.V. Aerials Erected
All types of Electrical
Appliances repaired

Easy Terms available

25/27 BEVERIDGE WAY,
NEWTON AYCLIFFE
Telephone 540



Former Officers, Warrant Officers and Sergeants of the Services, or others willing to serve as voluntary leaders are needed for a new detachment of the Army Cadet Force being raised in Newton Aycliffe. Write to the Secretary, Durham T. & A.F.A. 53 Old Elvet, Durham, giving details of age and former service.

CORPORATION NOTES

All of us in Newton Aycliffe must regret the dissolution of the Community Association following the decision taken, very reluctantly, at the public meeting on the 27th April last. The Association was formed in January, 1949 when the population of the town was barely 100 and there can be very few organizations in the town which do not owe their existence to the initiative taken by the Association in their formation.

The financial plight of the Association was first brought to the notice of the Corporation at the beginning of March last and although the Corporation then gave, immediately, financial help, to enable the Association to continue to function until the end of May and allow time for an investigation into its affairs, circumstances which arose later convinced the Management Committee that the Association could not continue. Accordingly it sought public support for its winding up.

The Association ceased to exist on the 30th April last, and as from that date, the Clarence and Beveridge Halls and other properties including the Tennis Courts in MacMillan Road reverted into the possession of the Corporation. So that the various organizations would not be deprived of the use of these properties the Corporation have taken over their management temporarily and have given an undertaking to honour the bookings made by the organizations and other parties on the same terms as previously. Discussions will be held shortly with the Local Authorities concerned to decide the future of these properties and of the furniture and equipment formerly vested in the Association, but in the meanwhile, requests for the use of the Clarence or Beveridge Hall or the upper rooms above the shops should be made to the cashier at Churchill House.

The Corporation's Budget of Capital Expenditure for the year ending 31st March, 1962 has now been approved by the Ministry. The Corporation anticipate spending no less a sum than three quarters of a million pounds on new development in the current year. This provides for the completion of the Housing Contracts in Vane Road area; the construction of further roads and sewers in readiness for house building on land lying north of Central Avenue between Burn Lane and Road A.1, and the completion of 232 houses out of 700 houses to be built on this site. In the town centre, work will commence later this year on the erection of a second block of shops on the south side of Beveridge Way and these will include a large supermarket. Other projects, for which bodies other than the Corporation are responsible, which are planned to start in 1961, include a Health Service Centre, Public Library in the town centre, Old People's Hostel in Shafto Way, a Roman Catholic Primary School, a Church for the Latter Day Saints, and the British Legion Club on a site adjoining Mac-Millan Road.

The Woodham Burn Private Housing Site is also to be extended to provide more land for private house building.

On the Industrial Estate, more than 149,500 square feet of new factory space were built during the past year and during the current year a further 167,500 square feet of factory space is to be provided. As a result of these extensions and new factories, the number of industrial workers on the Industrial Estate increased last year by more than 500 and is expected to increase by a similar number during the current year.

Considerable damage is still being caused to greens and grass verges by the parking of vehicles, the greatest damage being done by furniture removal vans which often pull from the roadway across a green in order to gain easier access to the house from, or to which, the furniture is being removed. Residents are asked to co-operate in preventing this damage. In cases of all damage the offenders, where known, will be prosecuted.

The wattle wood fencing erected around many gardens in the town will not withstand the strong winds which are so commonplace in this area and considerable expenditure has been incurred by the Corporation in the past in repairing and replacing the fencing. This drain on the Housing Repairs Fund cannot continue indefinitely and some years ago, in anticipation of the time when the wattle wood fencing would have to be removed altogether, the Corporation planted hedges alongside the fencing. Many of these hedges have now grown to a sufficient height to provide a reasonable boundary fence around the gardens and, with good pruning and attention by the tenants, will soon thicken out to form an adequate barrier to prevent dogs gaining access to the gardens. It has, therefore, been decided in such cases that any wattle fencing severely damaged in future shall not be replaced. Any tenant who finds the hedge around his garden an insufficient barrier to prevent dogs getting into his garden can obtain from the Housing Department, angle iron and strands of wire to fix inside the lower part of the hedges until such time as the hedges thicken.

ROAD SAFETY

Personal Responsibility Drive

To Drivers:

Bad parking in our town centre is still occurring. Must you park at an angle and leave your "tail" sticking out over the white line which, as you know, is both illegal and dangerous. Also, there is such a handy car park it seems a pity it is not used as it should be.

To Dog Owners:

The number of dogs killed on the road and accidents caused by dogs is increasing annually. Please help to fight this by not letting your pets run loose.

To Everyone:

Please take a personal interest in Road Safety in such ways as keeping an eye on the youngsters, don't let the under 5's. run around unattended. Help to keep the streets clear of broken glass, watch your road drill, don't let your child ride a bicycle that is too big for him. Remember, Road Safety is a Personal Responsibility.

Your Road Safety Committee meet on the first Wednesday of every month at 7-30 p.m. in the boardroom at Churchill House. Anyone interested is invited to attend. Next date, Wednesday, June 7th.

H. Coles, *Chairman.*
3 Mellanby Crescent.

REFUGEE FAMILY

The Newton Aycliffe Refugee Committee have much pleasure in announcing the arrival of the refugee family to Newton Aycliffe on Tuesday, 9th May, 1961. To all those organisations and individuals who have done so much to ensure the comfort and welfare of "the family," a special message of appreciation is given by the parents. They and the children are overjoyed to be in their new home.

LEAGUE OF FRIENDS OF AYCLIFFE HOSPITAL

The Annual Flag Week held from the 24th to 29th April raised the sum of £70 19s. 7d. We wish to say Thank You to all those people of Newton Aycliffe who responded so well to our appeal.



R.A.F. ASSOCIATION NOTES

With Battle of Britain week swiftly coming around once again, plans are already being made for the week's programme. Many ideas and suggestions are being considered, and it is hoped that this year we will be able to surpass all efforts previously made. Members and friends are cordially invited to bring to the notice of the committee any ideas they may have for inclusion in the Wings Week events.

Battle of Britain is our week. Let us all work together in this most important campaign. We owe this to our old colleagues.

As Welfare is our main concern in the Association, members will be pleased to hear that much good work continues to be done in Newton Aycliffe, thanks to you as members and to our Welfare Officers. It is comforting indeed to know that we belong to such an association where members welfare is of primary importance.

The Games Section still forges ahead and are now in the finals of the R.A.F. Shafto Cup. Should this cup become ours, it will have been hard earned, as there has been much keen competition for this coveted trophy.

Several new additions are being planned for the Branch Headquarters, which will not only add to entertainment but to the comfort of our members in general.

The Branch continues to go from strength to strength and to date we have beaten last years figures.

H.G.S.

ATHLETICS CLUB

The town's Athletic Club has been re-formed and now holds two meetings a week, on Tuesday and Friday evenings from six o'clock onwards. A coach is in attendance for at least part of each session, but training facilities are available any night upon request.

The committee feel that there are probably sources as yet untapped in the field of Athletics in Newton Aycliffe and will be pleased to see anyone who has any interest in that direction.

Boys, girls, men and women, athletic or non-athletic, interested in coaching or just being on hand to help when required, it doesn't matter so long as you are keen and enthusiastic. Just make yourself known at Burn Lane Sports Field on either evening and you will be very welcome.

R S
ne



Your Opportunity!

PATONS & BALDWIN'S LIMITED
DARLINGTON.

have plenty to offer at Britain's most
modern textile factory

Clean, Light Machine Work.

High Earnings with Good Prospects.

Excellent Welfare and Social Facilities.

Cheap Transport direct to Factory from Outside Areas.

CALL OR WRITE—PERSONNEL DEPARTMENT

Interviews every afternoon and Saturday mornings.

HALL'S Wedding Cars

TAXIS Day and Night Service

Telephone Newton Aycliffe 494

Agents for:—

T. W. CRACKNELL,
Furniture Removals,
Storage,
General Haulage,
also

Bishop Auckland Co-operative
Society Ltd.

(FUNERAL SERVICES)

Telephone Newton Aycliffe 494

Call or Write

18 HEILD CLOSE,
NEWTON AYCLIFFE.

WENTON'S

Part Exchange Mart

Always changing, Bargains in
Part Used Wardrobes, 3-Pce.
Suites, Bed Settees, Tables,
Chairs, Sideboards, and
Electric Washers.

All Washers guaranteed

EASY TERMS AVAILABLE

11/13 GREENWELL RD.,
Newton Aycliffe

M. & K. E. Collinson

TROUBLE FREE
RENTAL VIEWING
from 7/6d. per week

Newton Aycliffe 447

MEYNELL Funeral Services

40, 150, 248 NORTH ROAD, DARLINGTON

Tel. 2542 Day and Night

Established 60 years

NEWTON AYCLIFFE OVER 60 CLUB

The Whist Drives recently organised are proving very popular. Dominoes too are well patronised, and if any reader can tell us how to run a "Domino Drive" we would be very grateful.

Any other type of card game etc. would be put to good use in the Club, and we would welcome gifts of this sort suitable for older people to play.

Any "Over 60" living within three miles radius of the Town Centre is eligible to join the Club, so come along and join us.

The next visit of the Chiropodist will be on Saturday, 1st July at 2 p.m.

Entertainment in June will be given by:- Hunter Road Group 7th June; Wheatley Hill Over 60 Club 21st June.

There was a large turn out of members for the day's outing to By on 8th May. The run over the moors was enjoyed by all, meals at the Royal Hotel were good, and most important the weather, though blustery, was fine and bracing. Altogether a most enjoyable day in good company.

CAN WE HELP YOU?

Have you any Worries or Problems?

For the 101 Questions you want answered
ask your local

CITIZENS ADVICE BUREAU

Community Centre, Finchale Road.

Open Every Friday 2-0—3-30 p.m. and 7-30—8-30 p.m.

FAMILY PLANNING ASSOCIATION

Clinics are held in the Beveridge Hall every Tuesday from 2 p.m.—3-30 p.m.

Information and appointments from :- Mrs. Thomas, 26 Eden Road, Newton Aycliffe. Tel. N.A. 637.

CHURCH OF ENGLAND

Memorial Fund

A memorial Fund to our late vicar, the Rev. T. A. Drewette, has been opened and, so that you may have the opportunity to contribute should you so desire, there will be some further publicity about this shortly. For the meantime, Mr. Hayes, of 16 Westmorland Way will be pleased to receive any contributions to this fund. We cannot say yet just what form this memorial will take.

Donations may also be placed directly through Barclays Bank, Town Centre, where they will be credited to the fund.

During the interregnum the services of the Church will continue as usual :

Weekdays : Holy Communion 7-30 a.m. except Thursdays, when there will be a celebration at 9 a.m. Matins 10 a.m. Evensong 7 p.m.

Sundays : Holy Communion 9 a.m., Children 11 a.m., Bible Class 2 p.m., Evensong 6-30 p.m.

The Curate will be available in the vestry of St. Clares from 10-15—10-30 a.m. and 7-15—7-30 p.m. each weekday except Friday and Saturday. Otherwise call at 31 Clarence Chare.

Please note these dates for June :

Monday 5	The Men's Guild meet in the Vicarage at 7-30 p.m.
Wednesday 7	Young Christian Action meeting, 7-30 p.m.
Thursday 8	Mother's Union 7-30 p.m.
Saturday 10	The Women's Fellowship outing.
Thursday 22	Women's Fellowship Meeting, 7-30 p.m.

Saturday, 8th July—Gift Day

FURTHER HON. OFFICERS OF ORGANISATIONS

Following our list last month, we are pleased to report the following amendments :-

Motor Club—Sec. D. J. Benson, 50 Emerson Way.

Boys Club—Leader Mrs. J. L. Kell, 5 McMillan Road.

Sec. Mr. T. Lauder, 110 Silkin Way.

Archery Club—Public Relations Officer, John F. Wilson,
70 Silkin Way.

Tenants' Association—Sec. Mrs. E. Palmer, 6 Vane Road.

Badminton Club—Sec. Mr. H. A. Wise, 46 Silkin Way.

Calling all Organisations !

The Community Association as such is no more, but many enthusiastic residents are seeing to it that the things which belong to the Town as a whole, shall go on.

Do you want our ANNUAL SPORTS DAY to die? or "THE NEWTONIAN"?

If not, then stir yourself and make sure that whatever Club, Society, Church, etc., to which you belong sends a representative to the new **NEWTON AYCLIFFE COUNCIL OF LOCAL ORGANISATIONS** (NACOLO FOR SHORT)!

The first meeting will be held on **TUESDAY, JUNE 6th** at 7-30 p.m. in the Upstairs Room at "The Iron Horse" and the "Caretaker Committee" hopes for 100% attendance.

Chairman: Mr. J. C. Ashford, **Hon. Sec:** Mr. E. Birch,
Hon. Treasurer: Mr. A. Bellfield.

WENTON'S WENTON HOME FURNISHERS Ltd.**"G" PLAN and MODERN FURNISHERS****Watch Windows for Weekly Special Offer**

Divans by famous makers,

Somnus, Myers and Silentnight from £10-16-0

Spring Interiors from £5-19-6

Sunway Venetian Blinds. *Quotations Free*

Fitted Carpet Specialists.

We will measure your home and quote *Free* and
without obligation**EVERYTHING AVAILABLE ON EASY TERMS****25/27 BEVERIDGE WAY : NEWTON AYCLIFFE***Telephone : 540***METHODIST CHURCH NOTES****June 25th Sunday School Anniversary**

9-45 a.m. Senior, 2-30 p.m. Primary, 6-30 p.m. Junior.

All three services conducted by the Minister, Rev. W. R. Gunstone, B.D., and special singing by the children.

On this day we focus our attention on the work that is done all the year round by the Sunday School. We are grateful that no less than 45 people sacrifice their time each Sunday to the teaching of the children. Our work is fully graded so that the teaching is suited to the particular age group.

The beginners, from 3 years to 5 years meet at 2-30 p.m.

The Primary, from 5 years to 7 years also at 2-30 p.m.

The Juniors, from 7 to 11 years meet at 11 a.m.

The Seniors, over 11 years meet at 9-45 a.m.

If your children don't yet go to Sunday School why not bring them along. We shall be glad to welcome them and we are confident that, once they have been, they will want to come again.

Come and share in our celebrations on our Anniversary Day and you will see a little of the work that is being done.

TOWN BAND

The Chairman of the band, Mr. J. Minto, has moved from the town and his loss will be felt by all. He has been one of our stalwarts and a hard willing worker. Nothing connected with the band was ever too hard for him and he always gave of his best. His successor, whoever that will be, will have a high standard to attain to reach Mr. Minto's and on behalf of the band, we want to wish him every success in his new venture.

Will all societies, bodies, etc. please note that the band is open to all offers for concerts etc. We are engaged to play at old Aycliffe Vicarage Garden Fete on June 1st. This is a repeat engagement as we played at the same function last year with great success. We are also engaged to play Middridge Lodge banner into Durham on Miner's Gala Day. This we are most happy to do. If anyone has any enquiries will you please write to Mr. J. Pluse, 3 Clarence Corner, Newton Aycliffe, where I assure you of prompt replies.

BARITONE.

**THE NEWTON AYCLIFFE AND DISTRICT
CHAMBER OF TRADE**

To THE EDITOR:

Dear Sir,

Many members of the Chamber of Trade were extremely interested to see a letter in your May 1st issue suggesting that the shops in the town might close for a half-day on Monday and remain open all day Wednesdays. This was one of the very early discussions at the Chamber and although a small majority of the traders were in favour it was not carried through as there was some bitter feeling against it and the last thing the Chamber of Trade would wish to do would be to split the traders and leave the townspeople in doubt as to which was the correct half-day.

This Chamber would welcome the opinions of townspeople not connected in any way with the trades, and would also be pleased to hear from the many associations in the town the feelings of their members. Anonymous letters, for or against, will not under any circumstances be considered.

Yours faithfully,

G. I. MACHIN, *President.*

c/o. Barclays Bank Ltd., 47 Beveridge Way.

SCOUT NEWS

During Whitsuntide week several of the older boys attended a camp at Raby Park, the home of Lord Barnard, in preparation for the Troop Summer Camp which is to be held there from the 26th August to the 2nd September.

Due largely to business commitments, Mr. Albert Grey, who has been group Scoutmaster since the formation of the group, is now concentrating his efforts on the re-building programme, leaving the running of the Troop in the hands of the new Scoutmaster, Mr. Alan Hey with the assistance of Messrs. Stanley Clarkson and Harry Walton.

Following an increase in numbers it has been necessary to form a new patrol and the troop tradition of giving the new patrol the name of a bird of prey has been followed. The patrols and patrol leaders are now Falcon Patrol, Len Mutton; Kestrel Patrol, Harry Grey; Eagle Patrol, Leslie Robson; and Merlin Patrol, John Scott.

Congratulations to Kenneth Siddle on the award of his Scout Cord, which is given to Scouts who have obtained their first class badge and six proficiency badges.

When next in Bishop Auckland!

Come Co-operative Shopping at

**Bishop Auckland Co-operative Society's Store in
Newgate Street,**

where the Society extends the following services :

Drapery, Ladies and Children's Fashions ; Men's Wear ;
Boots and Shoes ; Hardware ; Furnishing ; Radio and
Television ; Drugs and Cosmetics ; Upholstery ; Travel,
Insurance and Banking Agencies ; Cafe and Catering ;
Self Service Grocery and a Milk Bar.

and

for your daily and weekly needs visit our Branch in

NEVILLE PARADE, NEWTON AYCLIFFE

The Financial Bulwark of the people :

Share Interest	4½%
Loan Interest	3½%

Advertising Pays!

A Newtonian advertiser was astonished to receive no fewer than 48 replies to his advertisement for additions to his staff, and that from one insertion.

Advertisers can be assured that a reader coverage of over 12,000 should and does produce results.

So 'Advertising Pays' in the Newtonian.

Enquiries for space rates to :- **EDWARD APPLEBY LTD.,**
Publishing Dept., Prince Regent Street, Stockton-on-Tees
Telephones 66004 & 67788

JAYS DEPARTMENTAL STORE

T.V. and FULL ELECTRICAL DEPTS.,
MODERN and REPRODUCTION
FURNITURE · NURSERY BEDDING,
. . FLOORCOVERING DEPTS. . .

All Refrigerators now £5 below normal prices

PART EXCHANGE

Write for Catalogues or Home Service Advisor

JAYS · 66 - 68 NORTHGATE · DARLINGTON

Buses—to Door

Phone 66767-8

BOYS CLUB

Membership 250 Boys and 130 Girls.

It is just about a year ago that Her Majesty the Queen graciously opened the Club.

The Boys Club has continued its past success in all directions and is now a strong organisation. In December of 1960 we established a Girl's Section. This has been most successful and fulfills the need in all activities for girls aged from 12—20 years.

The boys have their meetings as follows :-

Junior Boys 11—14 Tuesday and Thursday 6-30 to 9 p.m.
Juniors and Intermediate 15—21 6-30—10 p.m. Wednesday and Friday.
Girls Monday 6-30—9-30 p.m. Mixed Saturday 6-30—10 p.m. and Sunday 6-30—10 p.m.

Also open on Saturday morning for the sale of coffee.

Sunday morning 10 a.m.—12 noon Weight lifting, Skiffle Group.
Sunday Afternoon 2-30—5 p.m. Senior Boys.

Boys—Activities include Football, Cricket, Athletics, Weight Lifting, Judo, First Aid Training, Woodwork, Table Tennis, Billiards, Drama, Darts and Chess.

Girls—Dancing—Ballroom, Scottish and Country. Keep Fit, Drama, Athletics, Cookery and Cake Decoration, Handicrafts of all kinds. Hair styling and grooming, Table Tennis, Netball, Judo and Art.

JOINT SHOW COMMITTEE

Gardens Guild and Chrysanthemum and Dahlia Society

The first of the three 1961 Shows is on 12th August in the Over 60 Club Hall. Schedules will shortly be available. Start planning your entries now! Full details in the next Newtonian.

J.C.A.

WOMAN'S COLUMN

The Monthly Recipes.

June brings us the first of the gooseberry crop, so here are two ideas I hope are new to you :-

When making a gooseberry pie, or when just serving plain stewed gooseberries, add one head of elderflower—just the flower-ettes—this will give the fruit a delicious delicate muscatel flavour.

Gooseberry sauce with roast mutton—cook the gooseberries in water and enough sugar to sweeten slightly, then thicken the juice with a little cornflour or arrowroot, finally add chopped parsley—result a lovely tart green sauce, quite a change from the usual mint.

May starts the herring season and by now they are at their best. Have you tried them with salads, prepared this way :-

Wash and dry the boned herrings, spread thickly all over with made mustard. Then roll in medium or coarse oatmeal or browned breadcrumbs. Fry in a little fat—leave till cold and serve with salad.

Talking of salad—Cucumber sliced into yoghurt and served with lettuce and apple salad is a delightful mixture, especially on hot summer days.

Tired Housewives.

When you feel dead-beat, and who doesn't sometimes? Lie flat on your back with a small cushion under your thighs and put feet up on a firm chair—relax and think of nothing at all if you can, for 5 to 10 minutes. Then, get up slowly—you'll feel quite refreshed—it really does work—try it and see.

Household Hint of the Month.

Ball point ink stains can be removed from linen and cotton if you sponge the fabric with methylated spirit.

Picnic Time

Is almost with us. This is a good way to keep vacuum flasks really fresh inside. Always rinse as soon as possible, and occasionally put one teaspoonful of bi-carbonate of soda into the flask, fill up with hot water and leave for a few hours—then shake well, empty away, and wash out with hot water.

M.M.G.

CONTRIBUTIONS TO "NEWTONIAN"

Will organisations please continue to put their contributions through the letter box of the former Warden's Office, Finchale Road, by **June 7th. or 8th.** at the very latest. Thank you.

HAWARD & ROBERTSON LTD.

REMOVALS AND STORAGE

15-21 GARDEN STREET, DARLINGTON

Telephone: 2367

MOTOR INSURANCE	1 year free of Claims	33½%
Increased Discount	2 years " " "	40 %
Allowed on Transfer	4 years " " "	50 %

Inquiries invited ● Immediate Cover

E. W. KNAPTON, (Insurance Broker)

KENSINGTON INSURANCE AGENCY

Cockton Hill Road, Bishop Auckland

Tel. Bishop Auckland 3131 Newton Aycliffe 759.

(All classes of insurance business transacted. House purchase—Mortgages arranged.)

OPEN ALL DAY SATURDAY

CHILDREN'S PAGE

Newton Aycliffe's Young Naturalist's Society.

The first excursion was to a secluded copse off the Heighington Road. Flowers found included, wild strawberry, meddick, cross-wart, wild alum, wild pansy, dog violet, stitchwort, cowslip, horsetail, water avens, holly, crab-apple, hawthorne and chickweed. We also found a thrush's nest and a rook's nest.

The Badger

One morning, a few weeks ago, a dead badger was seen on the A1 near Coatham Mundeville, so there must be a sett in the area.

Few badgers are seen, even by foresters but signs of their presence in a district can be noticed by anyone. The black and white hairs on a barbed wire fence, the scratch marks on the bark of a tree, the entrances to the sett with piles of discarded bedding outside and the regular trackway they follow on nightly patrols.

Badgers come out at night, sometimes as late as half-past two in the morning. If they become aware of anyone watching them, or if they are disturbed in any way, they will probably come out an hour later the next night.

Do you know that the black and white stripes on the badger's head form a means of protective colouration? Badgers often scratch about near tree roots and in bright moonlight their stripes blend so well with the tree roots and the shafts of moonlight that they can scarcely be seen.

I shall be pleased to hear from any young naturalist who locates the badger around Newton Aycliffe as this information will be valuable for our records.

This month's Competition

Draw a picture of Badgers outside their sett. Post your entry to, "Nature Club," 5 Dixon Road, Newton Aycliffe by 30th June, 1961. Result will appear in the August Newtonian.

F.G.S.

EXAMINATION SUCCESSES

May we congratulate the following successful students listed below who have secured places in the County Grammar Schools:-

Boys

Brian J. Appleby	V. Atkins	Geoffrey W. Bell
Geoffrey N. Bilton	John W. Bright	Stephen C. Elliott
Brian P. Hope	James C. Lingwood	Anthony Medford
Dennis M. Miller	Dixon L. McDonald	John D. Nelson
John C. Newman	Kevin G. Regan	Ian C. Robinson
Leslie J. Smiles	John A. Spark	Geoffrey Surtees

Girls

Linda M. Ashford	Elizabeth M. Aston	Sylvia M. Barrett
Susan L. Beecroft	Barbara Brierley	Rita D. Brood
Evelyn M. Caird	Karen E. Dawson	Yvonne Diggins
Jennifer E. Elvidge	Lynne Evans	Marjorie J. Fryer
Patricia Gascoyne	Vlarie L. Nelson	Ann D. Proud
Susan H. Tabenor	Kathleen M. Vos	Jennifer Wilkinson
Linda M. Wilson	Sarah A. McLaughlin	

COMPETITIONS

We invite Boys' and Girl's Clubs, Brigades, etc. to try and think out an interesting competition, for us to publish in our next two issues. Suggestions to be sent to the Editor's letter box, former Warden's Office, Finchale Road before June 6th or July 6th.

HOLIDAYS ABROAD

You'll need a fortune for this one! Jamaica. but it will be the holiday of your life.

The banana boats are first class for the joys of the sea-trip and once you enter the Caribbean you bask all day in glorious sunshine, watching the flying fish and the brilliance of the blue water.

The island itself is an earthly paradise with all manner of luscious fruits and rare and beautiful trees and flowers. The odd thing is there are no wild animals (cheers, no snakes) except the little mongoose, but the birds are fascinating, especially the humming birds.

It gets rather hot and sticky on the plains, but in no time you can drive up to the hills where the climate is delicious and you can watch the ships in the harbours. At night you can eat out of doors with fireflies flitting around in the dark. And for the bathing, you're tempted to stay in the water all day, sometimes its even too warm and you swim round to where a waterfall comes down into the sea to cool off.

It's a great place for picnics, even by moonlight. The Jamaicans are very hospitable, and there's no colour bar, but much friendliness. No one can help loving the picanninnies, and you see as many different coloured skins as types of scenery when you drive around, from tropical palms to cattle estates that look like English parks! Sport? Well, almost everything from polo to fishing and you can climb the highest mountain peak on foot with the aid of a pack-mule. So let's hope you win that Pool!

(P.S.—But don't choose Jamaica's hurricane season).

S.H.

TOWNSWOMEN'S GUILD

The May meeting was opened by the Chairman, and the minutes were read by Mrs. Nelson, the Treasurer's report by Mrs. Greenbank and the Federation report by Mrs. Browne. There was an attractive stall of fancy goods left over from the April Fair, and these were sold in aid of the Congo Relief. Mrs. Featherstone won the raffle, and Mrs. Riley the competition for the prettiest arrangement of flowers in an egg-cup. The Social half-hour took the form of a beetle-drive, won by Mrs. Vickers.

On June 5th there will be a visit to Rowntree's factory at York, with time to see something of the City too.

Next month's meeting will therefore be on **June 12th**, at 7-15 p.m. The speaker will be a representative of Turner's, Decorators. The competition will be for the prettiest handkerchief.

The Adventures of Buttercup



COMMUNITY CALENDAR FOR JUNE

Beveridge Hall

- Sunday:** Town Band 10-30 a.m.
Assembly of God Sunday School 2-30 to 4 p.m.
Skating 4-7 p.m.
- Monday:** Library 2-4-30 p.m. & 5-7 p.m.
Townswomen's Guild at 7-15 p.m. 5th June
- Tuesday:** Welfare Clinic 9-30-11-30 a.m.
Family Planning Clinic 2-3-30 p.m.
Skating Club 7-10 p.m.
- Wednesday:** Library 2-4-30 p.m. 5-7 p.m.
- Thursday:** 9-30-4 p.m. Welfare Clinic.
Dog Training Class 6-30 p.m. to 9-30 p.m.
- Friday:** Library 2-4-30 p.m. 5-7 p.m.
7-30 p.m. Table Tennis Session
- Saturday:** 7 p.m. Skating Club

Clarence Hall

- Sunday:** Assembly of God Services 6 p.m.
Junior Youth Club 8 p.m.
Jehovah's Witnesses 2-30 p.m.
- Monday:** 1-30-3-45 p.m. W.V.S. Children's Nursery.
Jehovah's Witness 7 p.m.
- Tuesday:** Whist Drive 7-30 p.m. Open to all
- Wednesday:** 2-00 p.m. W.V.S. Meeting.
St. Mary's Youth Club 6-7 Juniors 7-8 Seniors
- Thursday:** Junior Youth Club 7-9-30 p.m.
- Friday:** Assembly of God Youth Club 7 p.m.
- Saturday:** Free

Committee Room

- Sunday:** Loco Spotters 7 p.m. to 10 p.m.
- Monday:**
- Tuesday:** Welfare Clinic 9-30-1
F.P.A. Clinic 2-3-30 p.m. Toc H. 7 p.m.
- Wednesday:**
- Thursday:** 9-30 a.m.-4 p.m. Welfare Clinic
Women's Mutual 7 p.m.
Probation Officer 4 p.m. to 6 p.m.
- Friday:**
- Saturday:** Skating Club 7 p.m.

C.A.B. Room

- Sunday:** Free
- Monday:** 2-3 p.m. Registrar.
- Tuesday:** Free
- Wednesday:** Free.
- Thursday:** 2-3 p.m. Registrar.
- Friday:** 2-3-30 p.m. C.A.B. Session and 7-30 p.m.-
8-30 p.m. C.A.B. Session.
- Saturday:** Free.

Upstairs Room

- Sunday:** Cage Birds Society, 11th June (Morning)
- Monday:** Whist 7-30 p.m.-All welcome.
- Tuesday:** St. John Cadets (Girls) 6-30 p.m.
- Wednesday:** Town Band 7-30 p.m.
- Thursday:**
- Friday:** 6-30 p.m. St. John Cadets (Boys).
- Saturday:** Town Band (Juniors) 10 a.m.

M. & K. E. Collinson

SPECIAL SPRING OFFER

17" x 21" Television

Example :-

17 inch Phillips Videomatic £12 12s. 0d. Deposit (your old set taken in part exchange) and 48 weekly payments of 10/- (you don't pay holidays or Christmas fortnights) for 3 years. These T.V.s. are covered by our "ALL-IN" maintenance. Free service calls, free tubes, valves, etc.

Payments deferred during sickness or unemployment

CALL AND SEE THESE SETS NOW AT

8 NEVILLE PARADE

PHONE NEWTON AYCLIFFE 447

TRADE NOTICES

Rate—2/- per line

Chimvac .. Electric Sweep. Clean! Prompt! Efficient! Write or call 17 Walker Lane (opposite Simpasture Shops).

G. Ellis, Watch and Clock Repairer. Repairs now collected at:- Hardings, 66 Beveridge Way



'Startrite'
Driving
School

CORRECT DRIVING TUITION
Personally by ex-Driving Examiner who was also Police Advanced Instructor and is now a Registered R.A.C. Instructor.

18 NEVILLE PARADE,
NEWTON AYCLIFFE.
Tel. Newton Aycliffe 448.
"The BEST is the CHEAPEST"



"JACQUES"

HAIR STYLIST
Prop. Mrs. G.M. Carey

★

Permanent Waving from 25/-
Rollerwave 25/-

Salon: 8 BEVERIDGE WAY
TOWN CENTRE
Tel. Newton Aycliffe 520

BOB POCKLINGTON

for Records

TOP TWENTY IN STOCK

STEREO, SHOW MUSIC
and ACE OF SPADES CLASSICS

76 Beveridge Way • Newton Aycliffe

Telephone 554

Tel. 2696 & 3081

Wm. Harker & Sons
FUNERAL FURNISHERS
King Street, Darlington

Cremations arranged—any distance
Awarded 11 Diplomas of Merit



"For
Everything
Musical"

8-10
TUBWELL
ROW,
Darlington

Tel. 66224